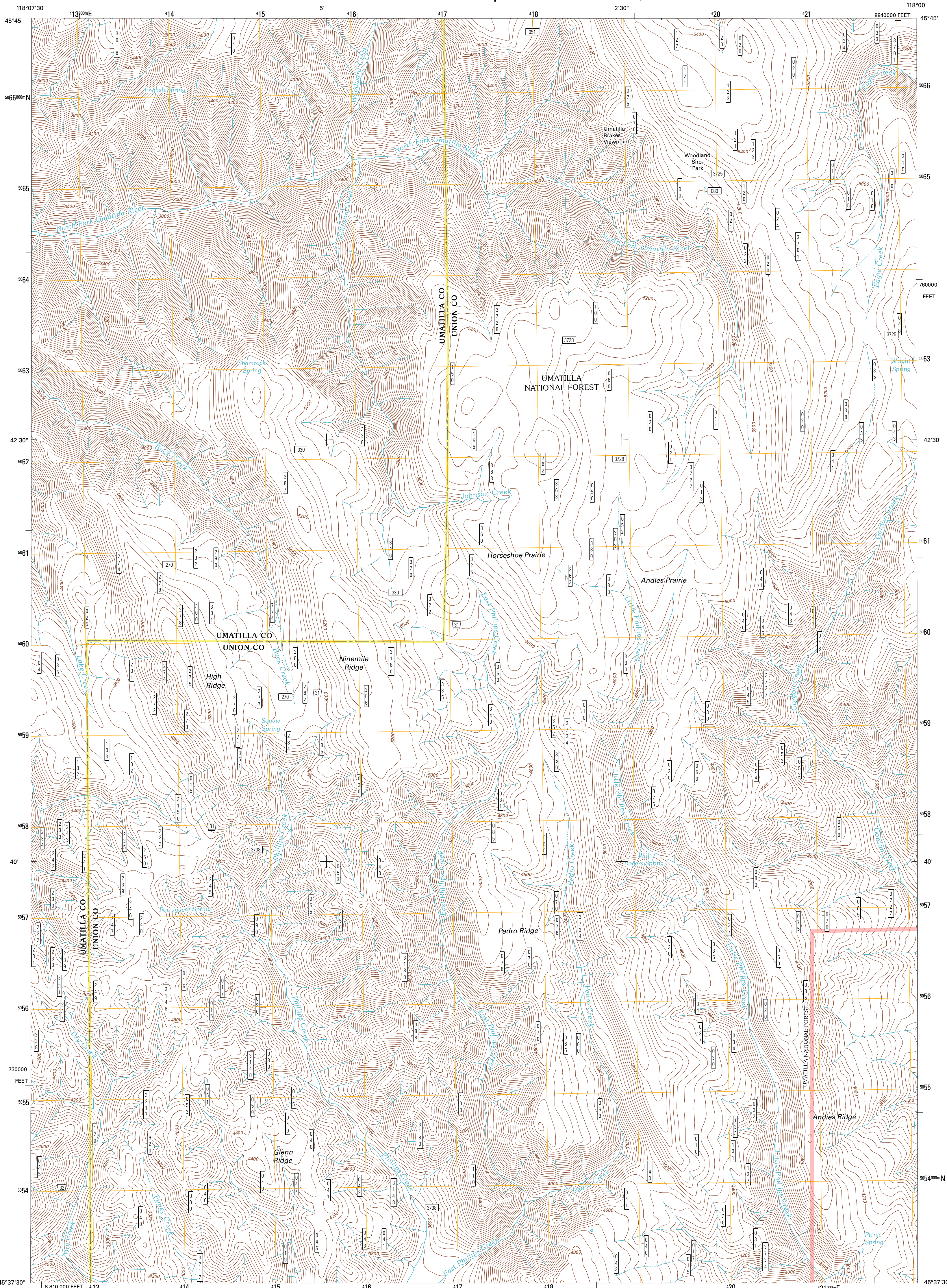




U.S. DEPARTMENT OF THE INTERIOR  
U. S. GEOLOGICAL SURVEY

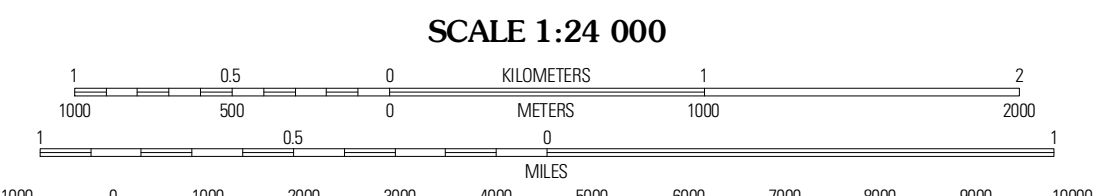
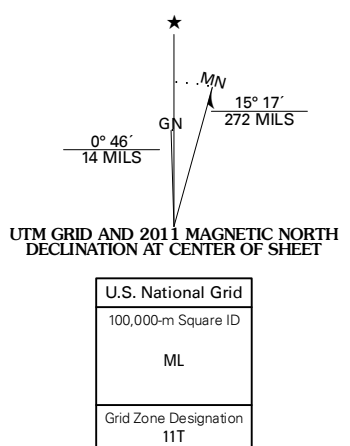


ANDIES PRAIRIE QUADRANGLE  
OREGON  
7.5-MINUTE SERIES



Produced by the United States Geological Survey  
North American Datum of 1983 (NAD83)  
World Geodetic System of 1984 (WGS84). Projection and  
1 000-meter grid: Universal Transverse Mercator, Zone 11T  
10 000-foot ticks: Oregon Coordinate System of 1983 (north  
zone)

Imagery: NMAP, July 2009  
Roads: 1:2006-2010 Tele Atlas  
Roads within US Forest Service Lands: FSTopo Data  
with limited Forest Service updates, 2009  
Names: GNIS, 2010  
Hydrography: National Hydrography Dataset, 2009  
Contours: National Elevation Dataset, 2000  
Boundaries: Census, IBWC, IBC, USGS, 1972 - 2010



Black Mountain	Tollgate	Jubilee Lake
Bingham Springs	Andies Prairie	Purtridge Creek
Thimbleberry Mountain	Sanderson Spring	Elgin

ADJOINING 7.5 QUADRANGLES

**ROAD CLASSIFICATION**

Interstate Route State Route

US Route Local Road

Ramp 4WD

Interstate Route State Route

FS Primary Route FS Passenger Route

FS High Clearance Route

Check with local Forest Service unit for current travel conditions and restrictions.

ANDIES PRAIRIE, OR  
2011