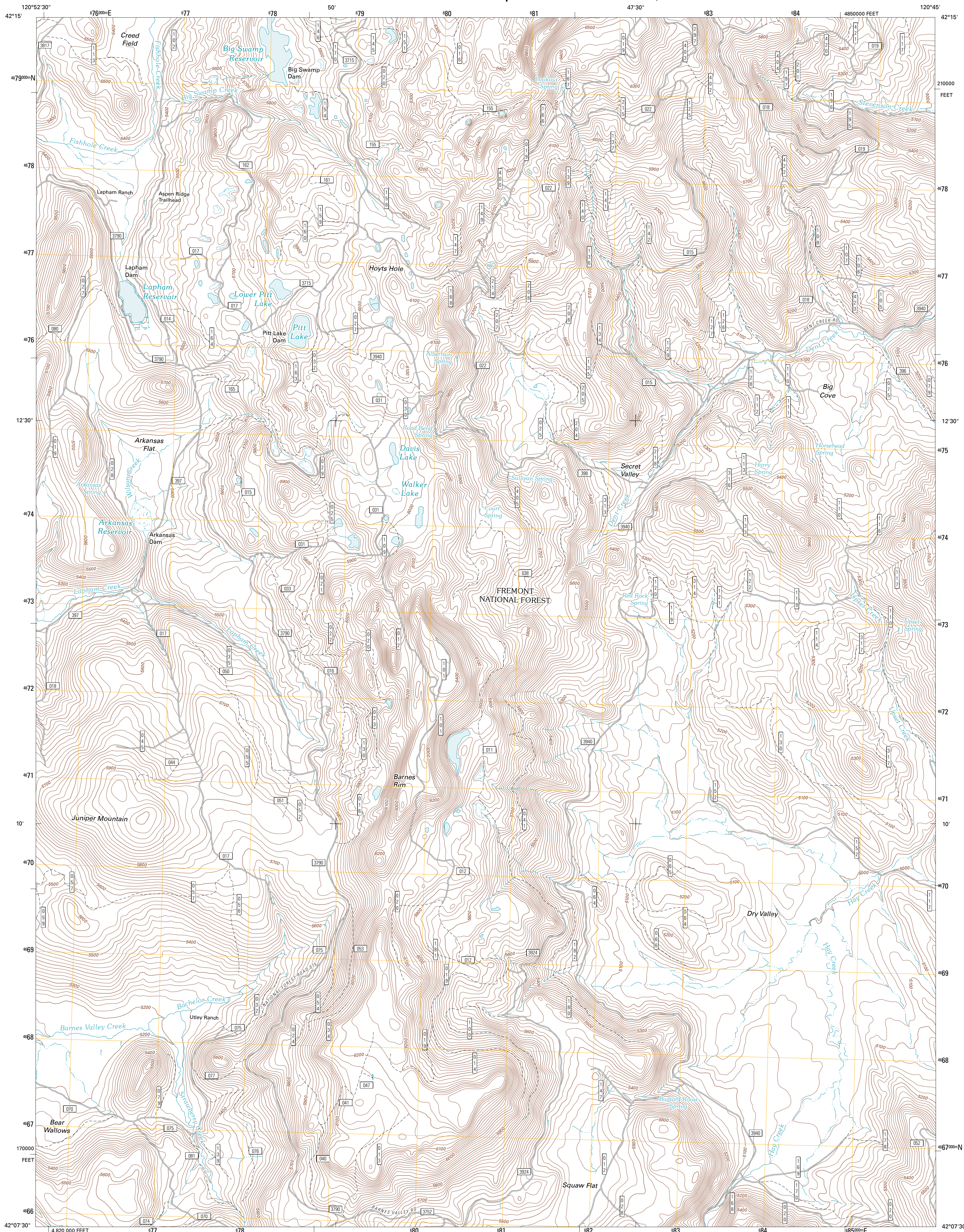




U.S. DEPARTMENT OF THE INTERIOR  
U. S. GEOLOGICAL SURVEY

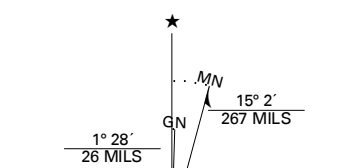


ARKANSAS FLAT QUADRANGLE  
OREGON-LAKE CO.  
7.5-MINUTE SERIES

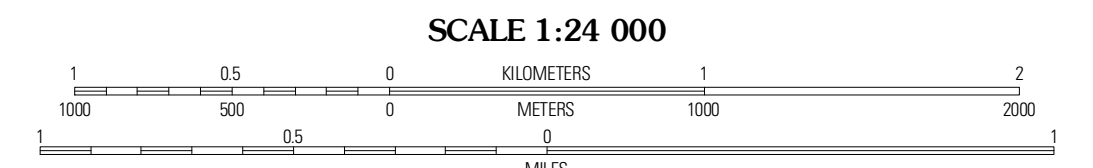


Produced by the United States Geological Survey  
North American Datum of 1983 (NAD83)  
World Geodetic System of 1984 (WGS84). Projection and  
1 000-meter grid. Universal Transverse Mercator. Zone 10T  
10 000-foot ticks: Oregon Coordinate System of 1983 (south  
zone)

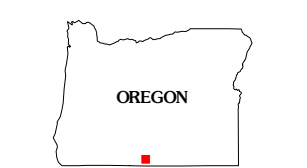
Imagery: NADP, July 2009  
Roads: 02/06-2010 Tele Atlas  
Roads within US Forest Service Lands: FSTopo Data  
with limited Forest Service updates, 2009  
Names: GNIS, 2010  
Hydrography: National Hydrography Dataset, 2009  
Contours: National Elevation Dataset, 1999  
Boundaries: Census, IBWC, IBC, USGS, 1972 - 2010



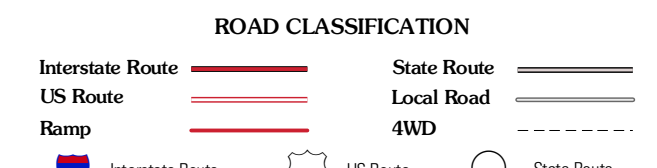
U.S. National Grid 100,000m Square ID	FM
Grid Zone Designator	10T



CONTOUR INTERVAL 20 FEET  
NORTH AMERICAN VERTICAL DATUM OF 1988  
This map was produced to conform with version 0.5.10  
of the USGS US Topo Product Standard.  
A metadata file associated with this product is draft version 0.5.16



Paradise Mountain	Quartz Valley	Cowgar Peak
Barnes Valley	Arkansas Flat	Drews Reservoir
Alder Point	Strawberry Butte	Dog Lake



Check with local Forest Service unit  
for current travel conditions and restrictions.

ARKANSAS FLAT, OR  
2011

ADJOINING 7.5 QUADRANGLES