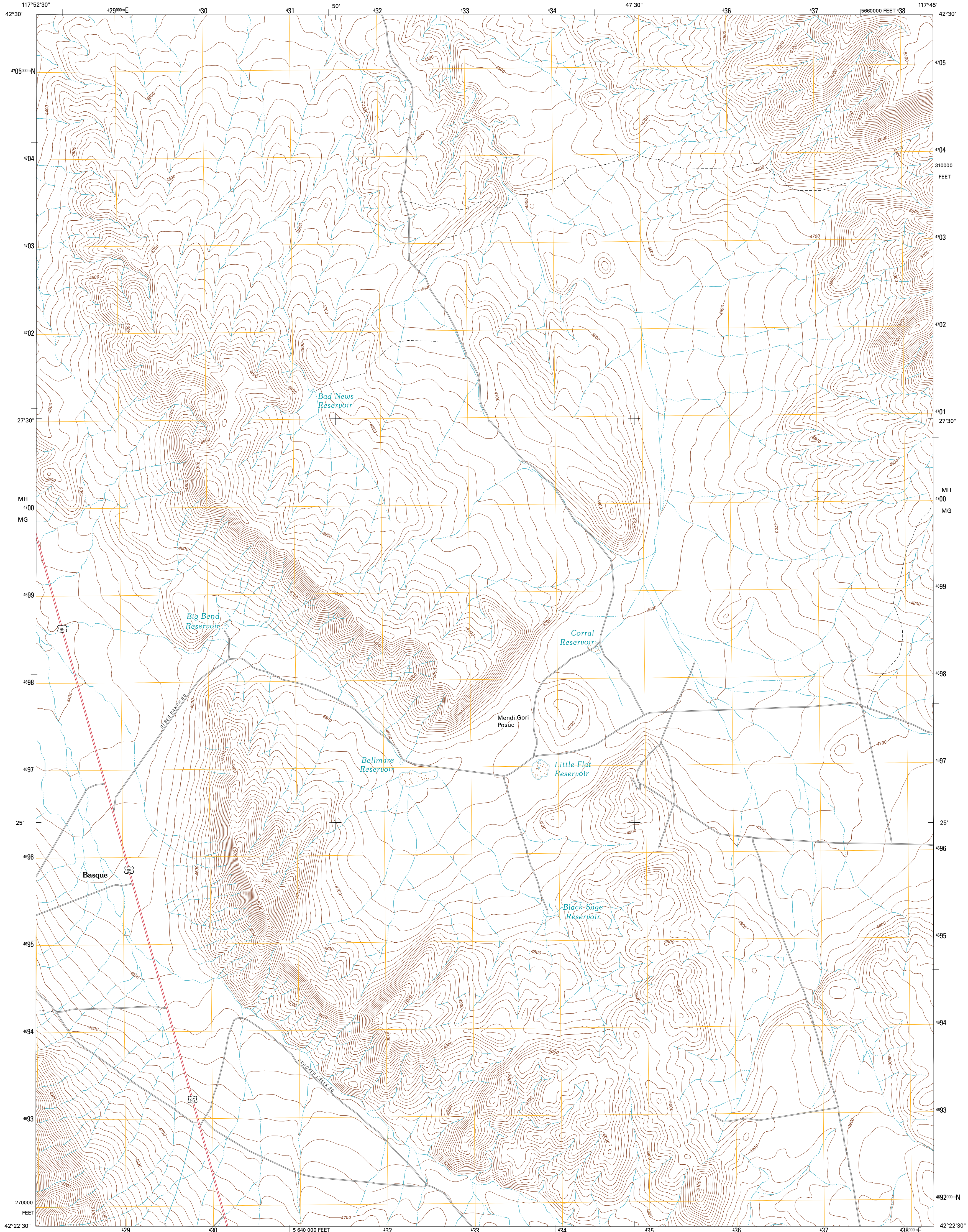




U.S. DEPARTMENT OF THE INTERIOR
U. S. GEOLOGICAL SURVEY

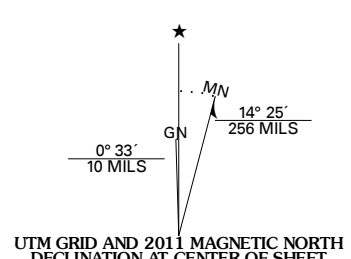


BASQUE QUADRANGLE
OREGON-MALHEUR CO.
7.5-MINUTE SERIES

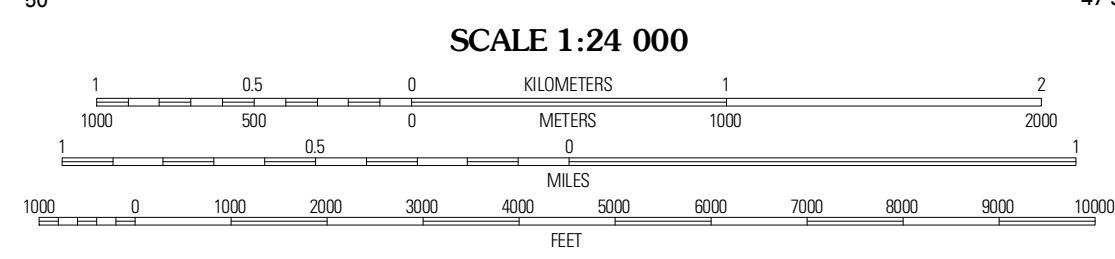


Produced by the United States Geological Survey
North American Datum of 1983 (NAD83)
World Geodetic System of 1984 (WGS84). Projection and
1 000-meter grid: Universal Transverse Mercator, Zone 11T
10 000-foot ticks: Oregon Coordinate System of 1983 (south zone)

Imagery.....NAIP, July 2009
Roads.....©2006-2010 Tele Atlas
Names.....©2010
Hydrography.....National Hydrography Dataset, 2009
Contours.....National Elevation Dataset, 2000
Boundaries.....Census, IBWC, IBC, USGS, 1972 - 2010



U.S. National Grid
100,000m Square ID
MH
MG
Grid Zone Designation
11T



SCALE 1:24 000
CONTOUR INTERVAL 20 FEET
NORTH AMERICAN VERTICAL DATUM OF 1988

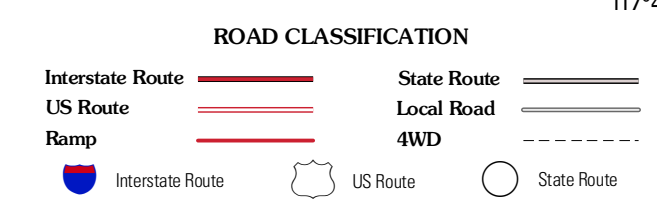
This map was produced to conform with version 0.5.10 of the USGS US Topo Product Standard. A metadata file associated with this product is draft version 0.5.16



QUADRANGLE LOCATION

Rome State Airport	Flat Top Mountain SE	Bowden Ranch
Three Man Butte Well	Basque	Battle Creek Ranch
Blue Mountain Basin	Blue Mountain Pass	Battle Mountain

ADJOINING 7.5 QUADRANGLES



BASQUE, OR
2011