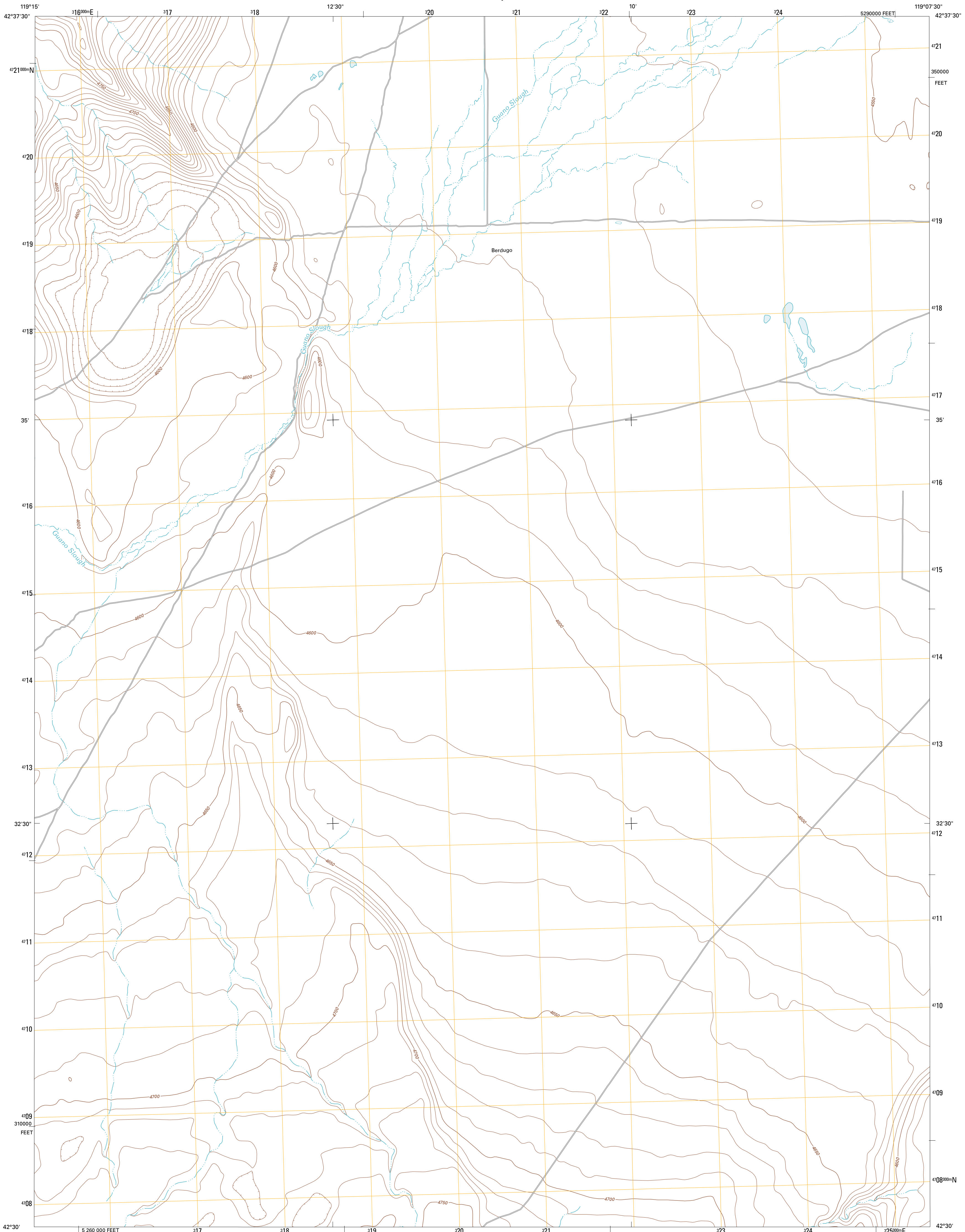




U.S. DEPARTMENT OF THE INTERIOR
U. S. GEOLOGICAL SURVEY

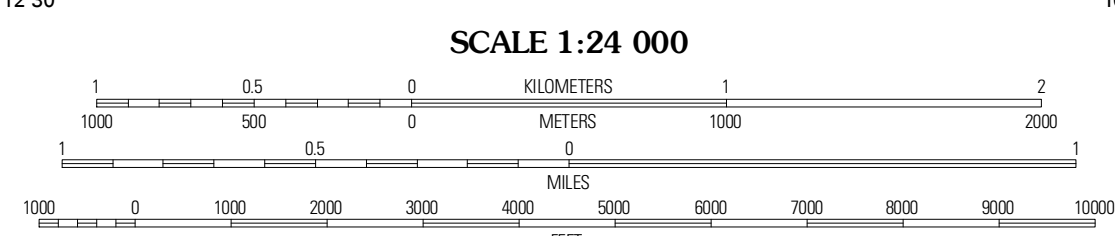
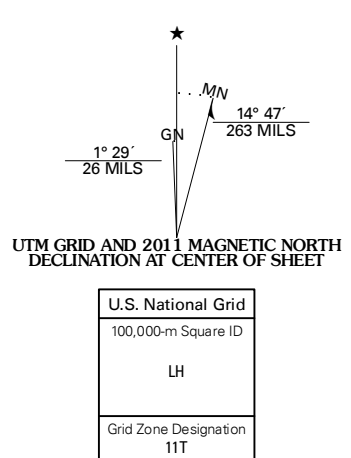


BLITZEN SW QUADRANGLE
OREGON-HARNEY CO.
7.5-MINUTE SERIES



Produced by the United States Geological Survey
North American Datum of 1983 (NAD83)
World Geodetic System of 1984 (WGS84). Projection and
1 000-meter grid: Universal Transverse Mercator, Zone 11T
10 000-foot ticks: Oregon Coordinate System of 1983 (south
zone)

Imagery.....©2006-2010 NAIP, July 2009
Roads.....©2006-2010 Tele Atlas
Names.....©2010
Hydrography.....National Hydrography Dataset, 2009
Contours.....National Elevation Dataset, 2000
Boundaries.....Census, IBWC, IBC, USGS, 1972 - 2010

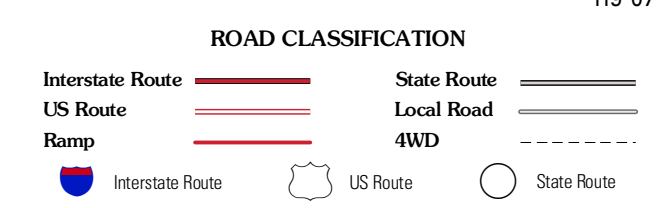


CONTOUR INTERVAL 10 FEET
NORTH AMERICAN VERTICAL DATUM OF 1988
This map was produced to conform with version 0.5.10
of the USGS US Topo Product Standard.
A metadata file associated with this product is draft version 0.5.16



QUADRANGLE LOCATION

Murphy Waterholes NE	Blitzen NW	Butler Hill
Gurneo Reservoir	Blitzen SW	Blitzen
Beatus Butte	Fish Fin Rim	Coyote Gap



BLITZEN SW, OR
2011

ADJOINING 7.5 QUADRANGLES