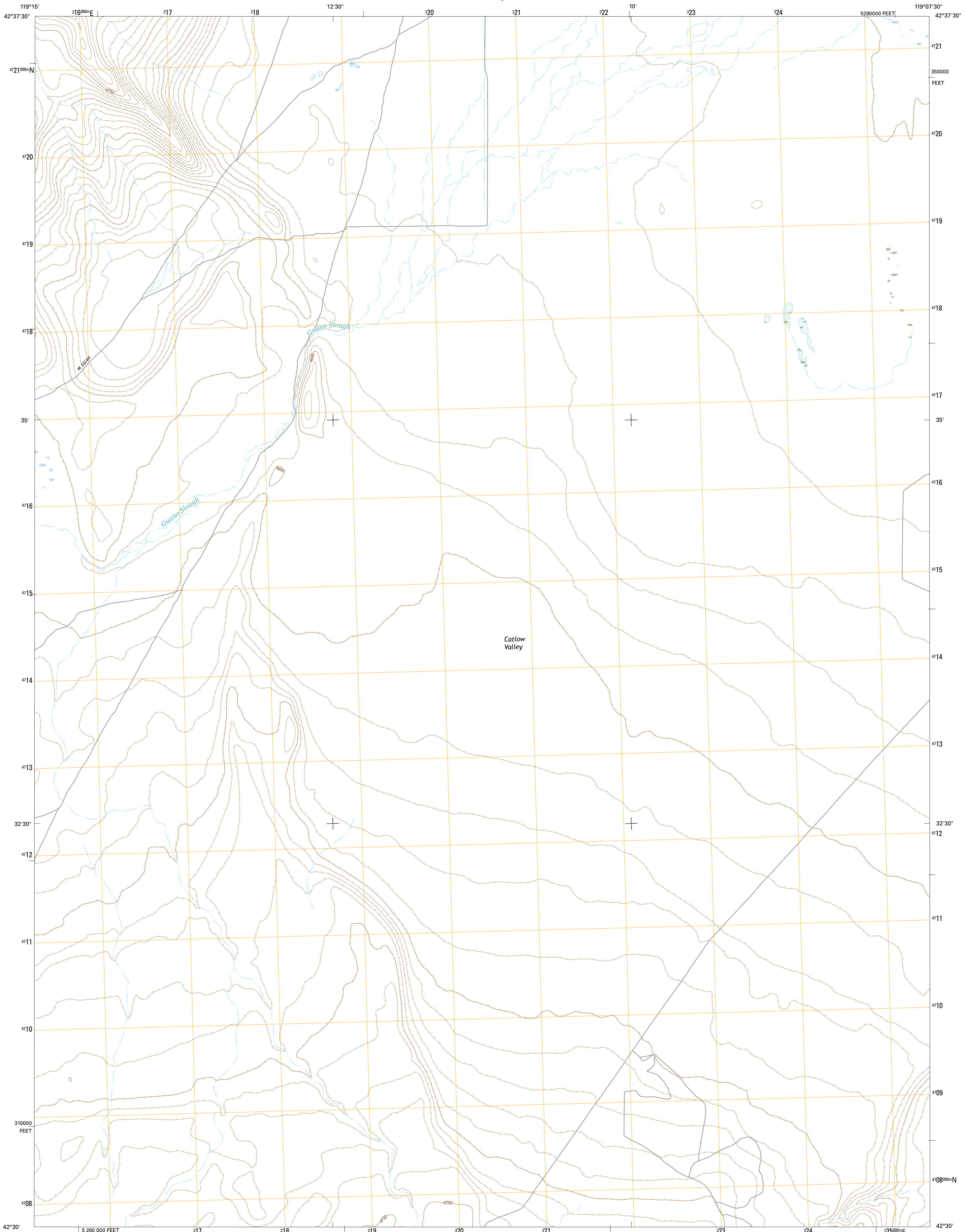




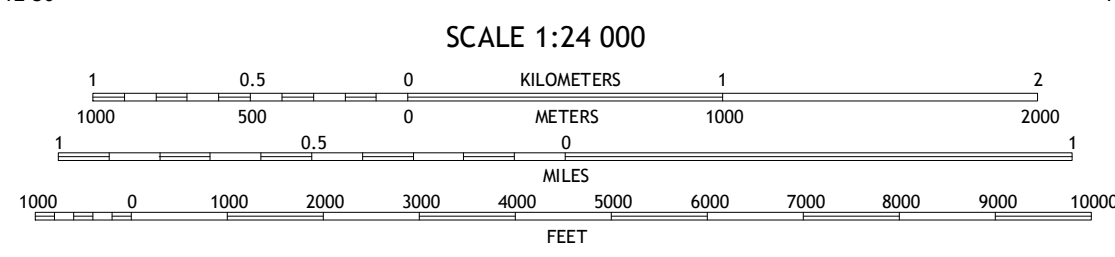
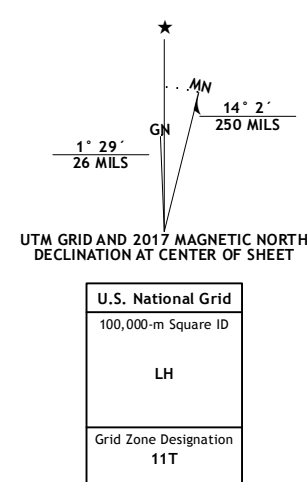
U.S. DEPARTMENT OF THE INTERIOR  
U.S. GEOLOGICAL SURVEY



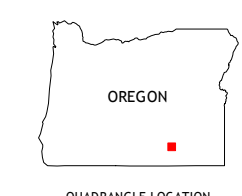
BLITZEN SW QUADRANGLE  
OREGON-HARNEY CO.  
7.5-MINUTE SERIES



Produced by the United States Geological Survey  
North American Datum of 1983 (NAD83)  
World Geodetic System of 1984 (WGS84), Projection and  
1 000-meter grid: Universal Transverse Mercator, Zone 11T  
10 000-foot ticks: Oregon Coordinate System of 1983 (south zone)  
  
This map is not a legal document. Boundaries may be generalized for this map scale. Private lands within government reservations may not be shown. Obtain permission before entering private lands.  
  
Imagery.....NAIP, November 2014  
Roads.....U.S. Census Bureau, 2015 - 2016  
Names.....GNS, 2016  
Hydrography.....National Hydrography Dataset, 2014  
Contours.....National Elevation Dataset, 2000  
Boundaries.....Multiple sources; see metadata file 1977 - 2016  
Public Land Survey System.....BLM, 2016  
Wetlands.....FWS National Wetlands Inventory 1977 - 2014



CONTOUR INTERVAL 10 FEET  
NORTH AMERICAN VERTICAL DATUM OF 1988  
  
This map was produced to conform with the  
National Geospatial Program US Topo Product Standard, 2011.  
A metadata file associated with this product is draft version 0.6.19



ROAD CLASSIFICATION

Expressway	Local Connector
Secondary Hwy	Local Road
Ramp	4WD
Interstate Route	US Route
	State Route

1	2	3
4	5	6
7	8	

ADJOINING QUADRANGLES

- 1 Murphy Waterholes NE
- 2 Blitzen NW
- 3 Butter Hill
- 4 Guano Reservoir
- 5 Blitzen
- 6 Beatus Butte
- 7 Fish Fin Rim
- 8 Coyote Gap

BLITZEN SW, OR  
2017

