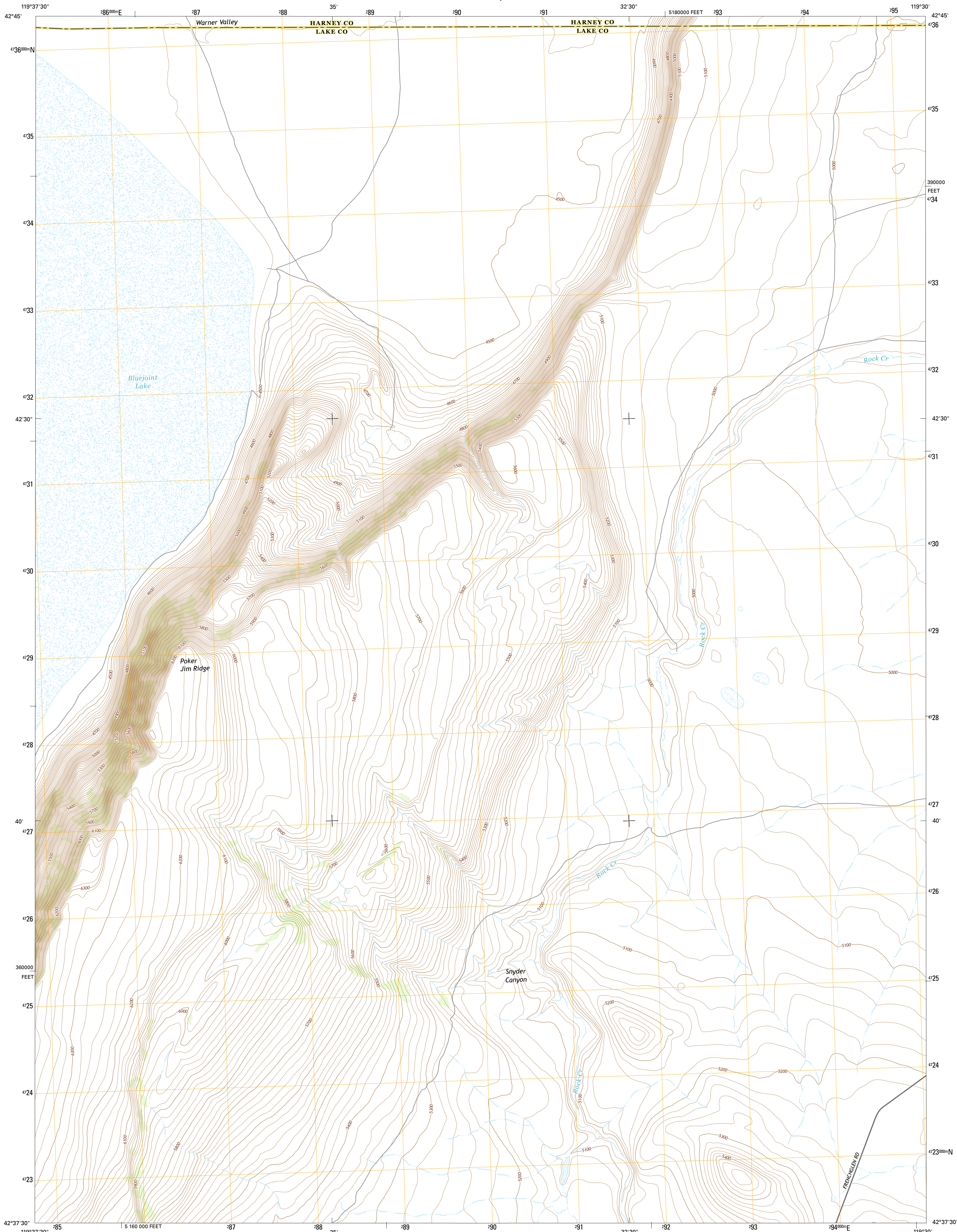




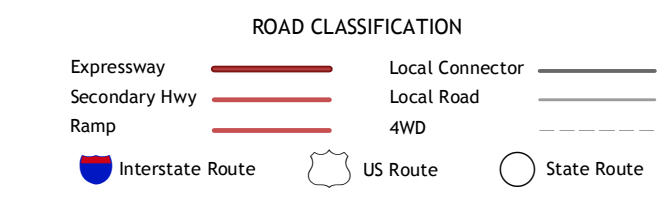
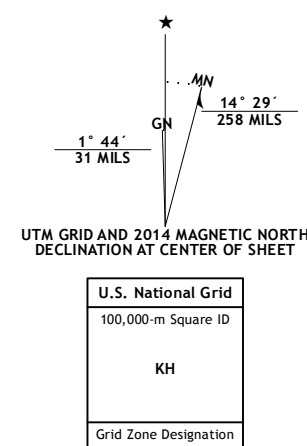
U.S. DEPARTMENT OF THE INTERIOR
U.S. GEOLOGICAL SURVEY



BLUEJOINT LAKE EAST QUADRANGLE
OREGON
7.5-MINUTE SERIES



Produced by the United States Geological Survey
 North American Datum of 1983 (NAD83)
 World Geodetic System of 1984 (WGS84). Projection and
 1 000-meter grid: Universal Transverse Mercator, Zone 11T
 10 000-foot ticks: Oregon Coordinate System of 1983 (south
 zone)
 This map is not a legal document. Boundaries may be
 generalized for this map scale. Private lands within government
 reservations may not be shown. Obtain permission before
 entering private lands.
 Imagery.....NAIP, July 2012
 Roads.....HERE, ©2013
 Names.....GNIS, 2013
 Hydrography.....National Hydrography Dataset, 2012
 Contours.....National Elevation Dataset, 2000
 Boundaries.....Multiple sources; see metadata file 1972 - 2013
 Public Land Survey System.....BLM, 2011



ADJOINING QUADRANGLES

1	2	3
4	5	6
7	8	

1 Corporation Rim
 2 Steamboat Point
 3 Orejana Canyon
 4 Bluejoint Lake West
 5 Sixmile Draw
 6 Campbell Lake
 7 Flook Lake
 8 Murphy Waterholes

CONTOUR INTERVAL 20 FEET
 NORTH AMERICAN VERTICAL DATUM OF 1988
 This map was produced to conform with the
 National Geospatial Program US Topo Product Standard, 2011.
 A metadata file associated with this product is draft version 0.6.16

BLUEJOINT LAKE EAST, OR
2014

