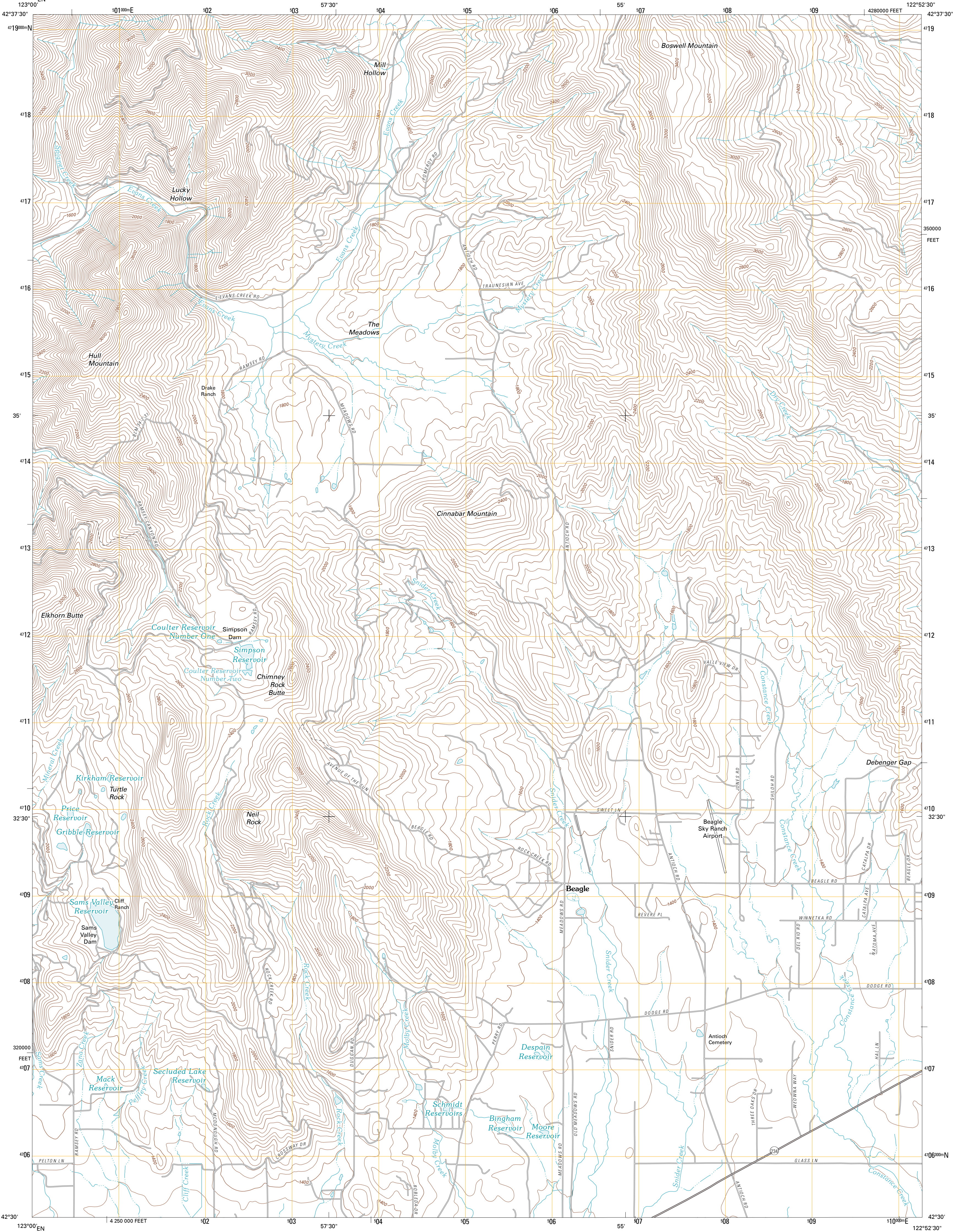




U.S. DEPARTMENT OF THE INTERIOR  
U. S. GEOLOGICAL SURVEY

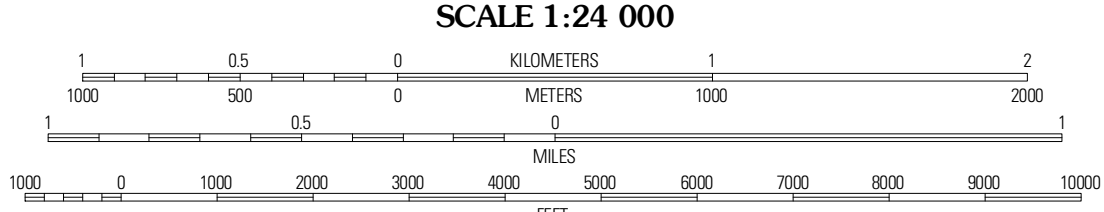
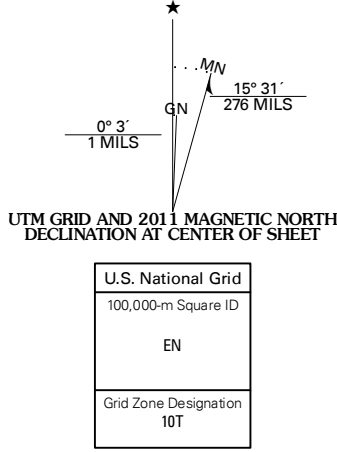


BOSWELL MOUNTAIN QUADRANGLE  
OREGON-JACKSON CO.  
7.5-MINUTE SERIES



Produced by the United States Geological Survey  
North American Datum of 1983 (NAD83)  
World Geodetic System of 1984 (WGS84), Projection and  
1 000-meter grid: Universal Transverse Mercator, Zone 10T  
10 000-foot ticks: Oregon Coordinate System of 1983 (south zone)

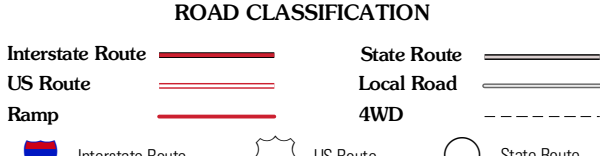
Imagery.....NAIP, June 2009  
Roads.....©2006-2010 Tele Atlas  
Names.....©2010  
Hydrography.....National Hydrography Dataset, 2009  
Contours.....National Elevation Dataset, 1999  
Boundaries.....Census, IBWC, IBC, USGS, 1972 - 2010



CONTOUR INTERVAL 40 FEET  
NORTH AMERICAN VERTICAL DATUM OF 1988  
This map was produced to conform with version 0.5.10  
of the USGS US Topo Product Standard.  
A metadata file associated with this product is draft version 0.5.16



Skeleton Mountain	Cleveland Ridge	Trail
McConville Peak	Boswell Mountain	Shady Cove
Gold Hill	Sams Valley	Eagle Point



BOSWELL MOUNTAIN, OR  
2011

ADJOINING 7.5 QUADRANGLES