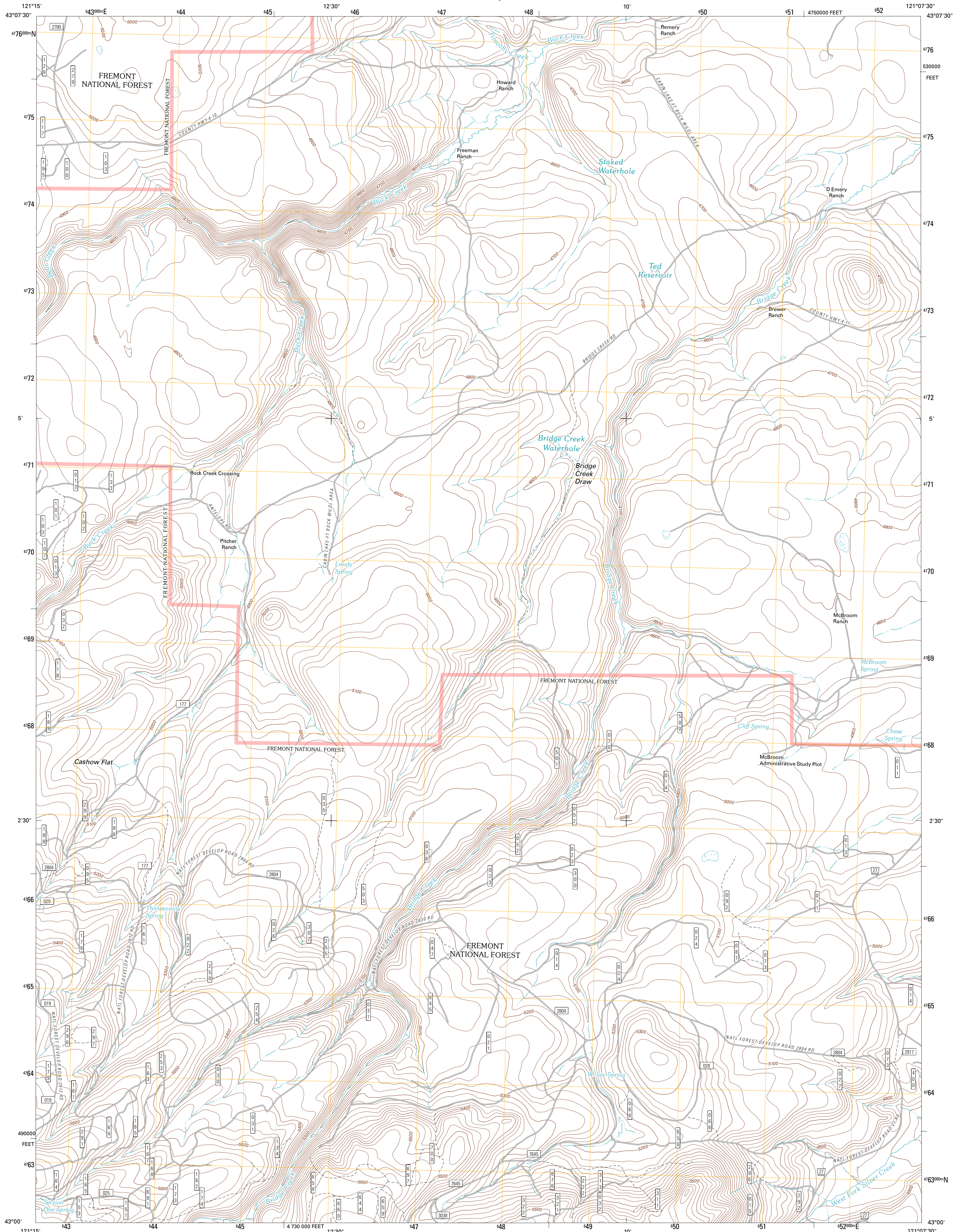




U.S. DEPARTMENT OF THE INTERIOR
U. S. GEOLOGICAL SURVEY

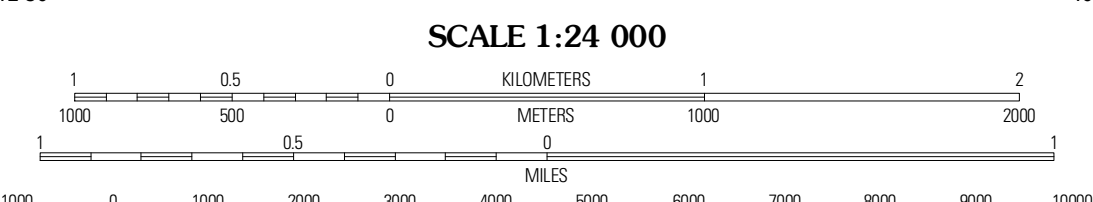
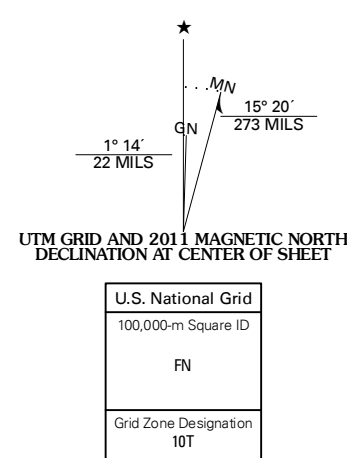


BRIDGE CREEK DRAW QUADRANGLE
OREGON-LAKE CO.
7.5-MINUTE SERIES



Produced by the United States Geological Survey
North American Datum of 1983 (NAD83)
World Geodetic System of 1984 (WGS84). Projection and
1 000-meter grid. Universal Transverse Mercator, Zone 10T
10 000-foot ticks. Oregon Coordinate System of 1983 (south
zone)

Images:.....NAP, July 2009
Roads:.....2006-2010 1:50,000 US Topo Data
with Limited Forest Service updates, 2009
Names:.....GNS, 2010
Hydrography:.....National Hydrography Dataset, 2009
Contours:.....National Elevation Dataset, 1999
Boundaries:.....Census, IBWC, IBC, USGS, 1972 - 2010



CONTOUR INTERVAL 20 FEET
NORTH AMERICAN VERTICAL DATUM OF 1988
This map was produced to conform with version 0.5.10
of the USGS US Topo Product Standard.
A metadata file associated with this product is draft version 0.5.16



QUADRANGLE LOCATION

Antelope Mountain	Outman Flat	Silver Lake
Rodman Rock	Bridge Creek Draw	Hager Mountain
Yamsey Mountain	Purtis Butte	Thompson Reservoir

ROAD CLASSIFICATION

Interstate Route	State Route	Local Road
US Route	4WD	
Ramp	US Route	State Route
Interstate Route	FS Passenger Route	FS High Clearance Route
FS Primary Route		

Check with local Forest Service unit for current travel conditions and restrictions.

BRIDGE CREEK DRAW, OR
2011

ADJOINING 7.5 QUADRANGLES