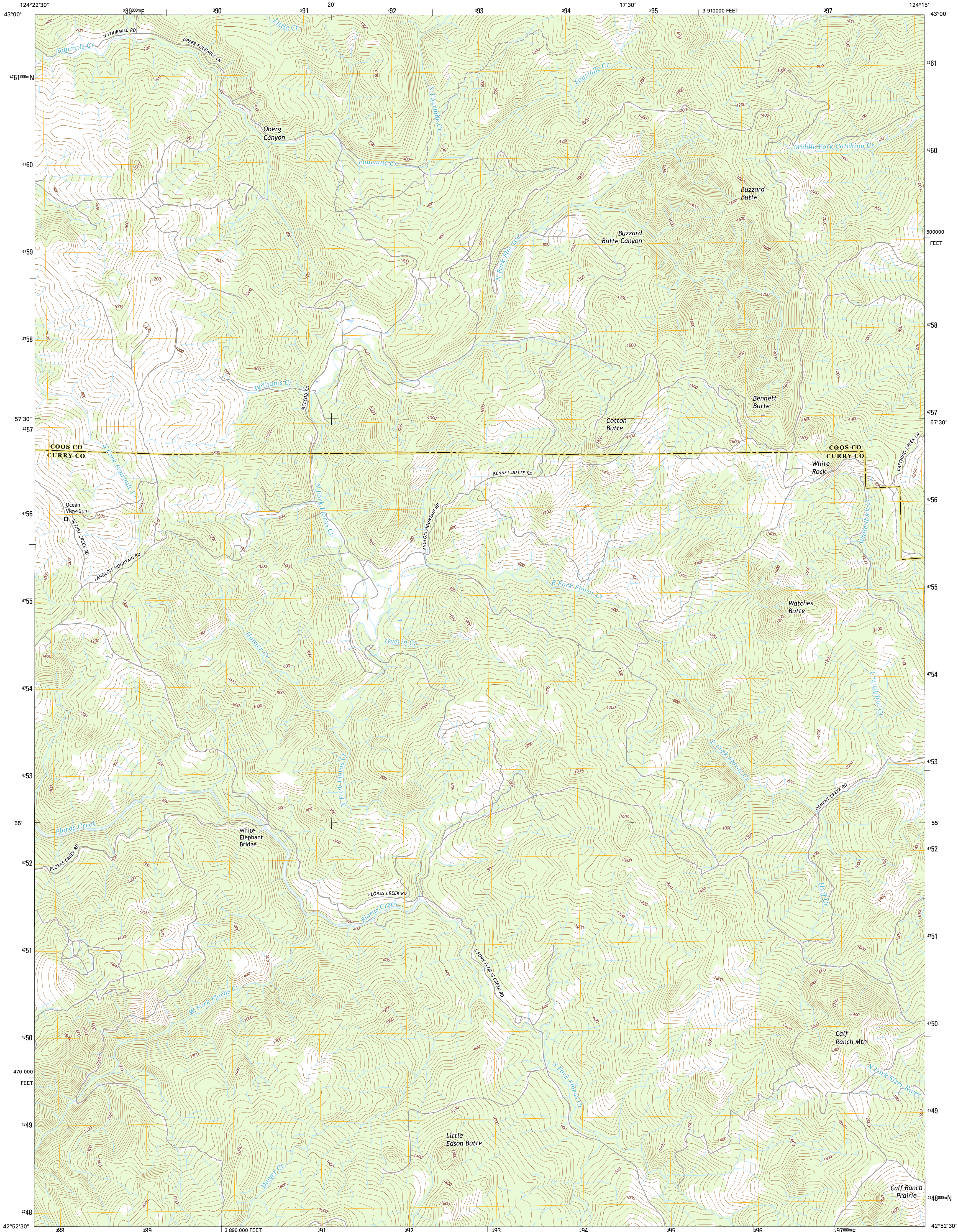




U.S. DEPARTMENT OF THE INTERIOR  
U.S. GEOLOGICAL SURVEY



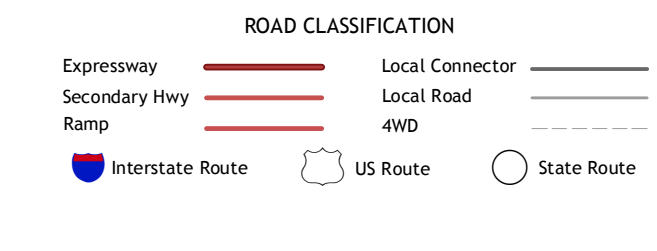
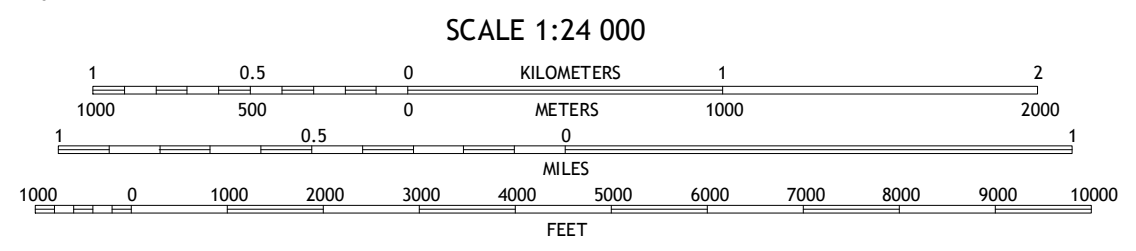
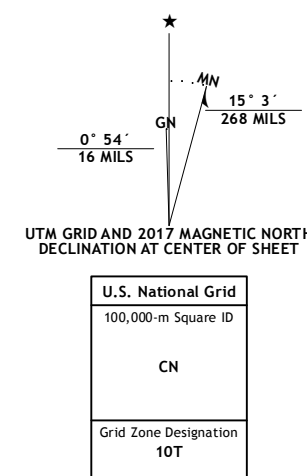
CALF RANCH MOUNTAIN QUADRANGLE  
OREGON  
7.5-MINUTE SERIES



**Produced by the United States Geological Survey**  
 North American Datum of 1983 (NAD83)  
 World Geodetic System of 1984 (WGS84), Projection and  
 1 000-meter grid: Universal Transverse Mercator, Zone 10T  
 10 000-foot ticks: Oregon Coordinate System of 1983 (south  
 zone)

This map is not a legal document. Boundaries may be  
 generalized for this map scale. Private lands within government  
 reservations may not be shown. Obtain permission before  
 entering private lands.

Imagery.....NAIP, October 2014  
 Roads.....U.S. Census Bureau, 2015 - 2016  
 Names.....GNIS, 2016  
 Hydrography.....National Hydrography Dataset, 2014  
 Contours.....National Elevation Dataset, 2000  
 Boundaries.....Multiple sources; see metadata file 1972 - 2016  
 Public Land Survey System.....BLM, 2016  
 Wetlands.....FWS National Wetlands Inventory 1977 - 2014



1	2	3
4	5	6
7	8	9

ADJOINING QUADRANGLES

1 Bandon  
2 Bill Peak  
3 Myrtle Point  
4 Langlois  
5 Dement Creek  
6 Sixes  
7 Mount Butler  
8 Barklow Mountain

**CALF RANCH MOUNTAIN, OR**  
2017

