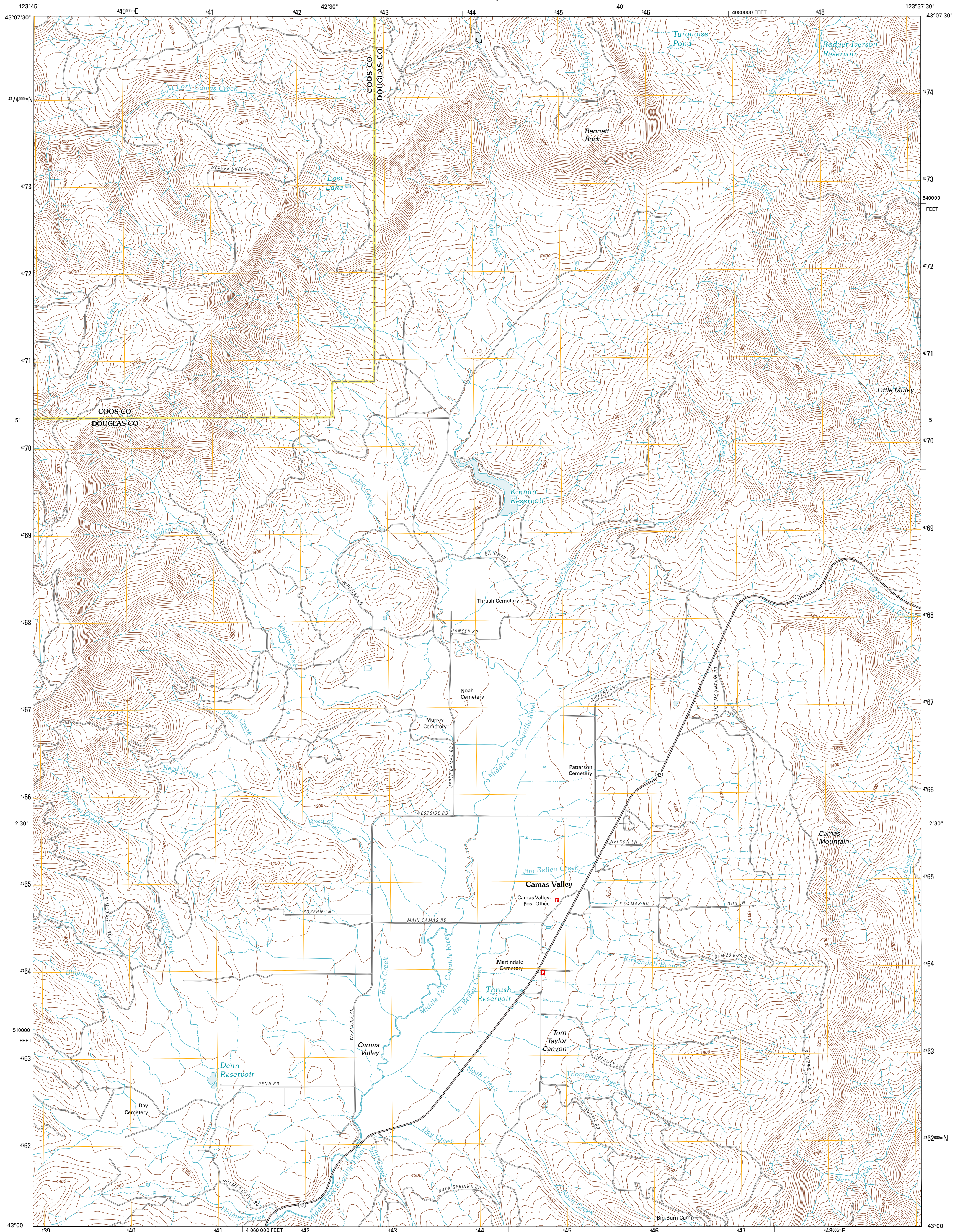




U.S. DEPARTMENT OF THE INTERIOR
U. S. GEOLOGICAL SURVEY

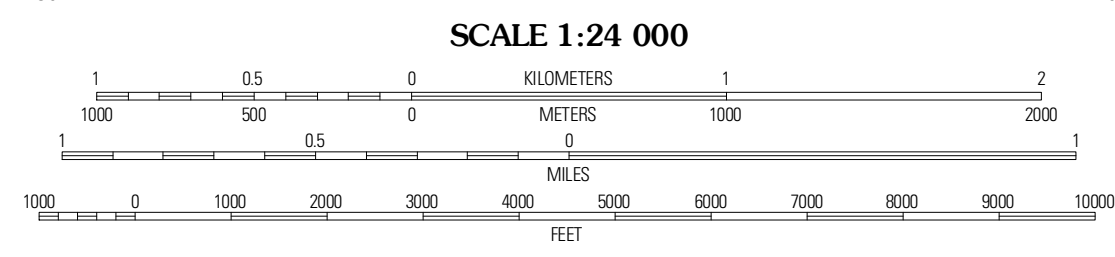
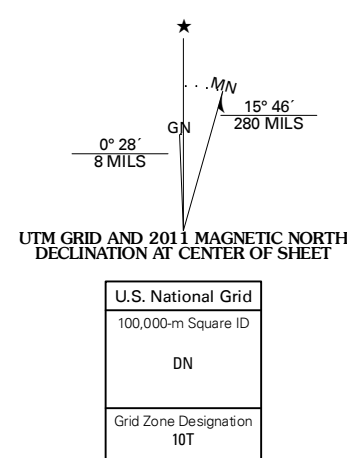


CAMAS VALLEY QUADRANGLE
OREGON
7.5-MINUTE SERIES



Produced by the United States Geological Survey
North American Datum of 1983 (NAD83)
World Geodetic System of 1984 (WGS84). Projection and
1 000-meter grid. Universal Transverse Mercator, Zone 10T
10 000-foot ticks. Oregon Coordinate System of 1983 (south
zone)

Imagery.....N.A.P., June 2009
Roads.....©2006-2010 Tele Atlas
Names.....GNS, 2010
Hydrography.....National Hydrography Dataset, 2009
Contours.....National Elevation Dataset, 2000
Boundaries.....Census, IBWC, IBC, USGS, 1972 - 2010



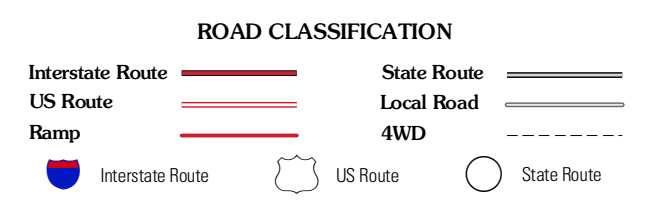
CONTOUR INTERVAL 40 FEET
NORTH AMERICAN VERTICAL DATUM OF 1988

This map was produced to conform with version 0.5.10
of the USGS US Topo Product Standard.
A metadata file associated with this product is draft version 0.5.16



| | | |
|--------------------|-------------------|---------------------|
| Sidum | Mount Curry | Reston |
| Kenyon Mountain | Camas Valley | Tennile |
| Bone Mountain | Chipmunk Ridge | Law Oak Mountain |

ADJOINING 7.5 QUADRANGLES



CAMAS VALLEY, OR
2011