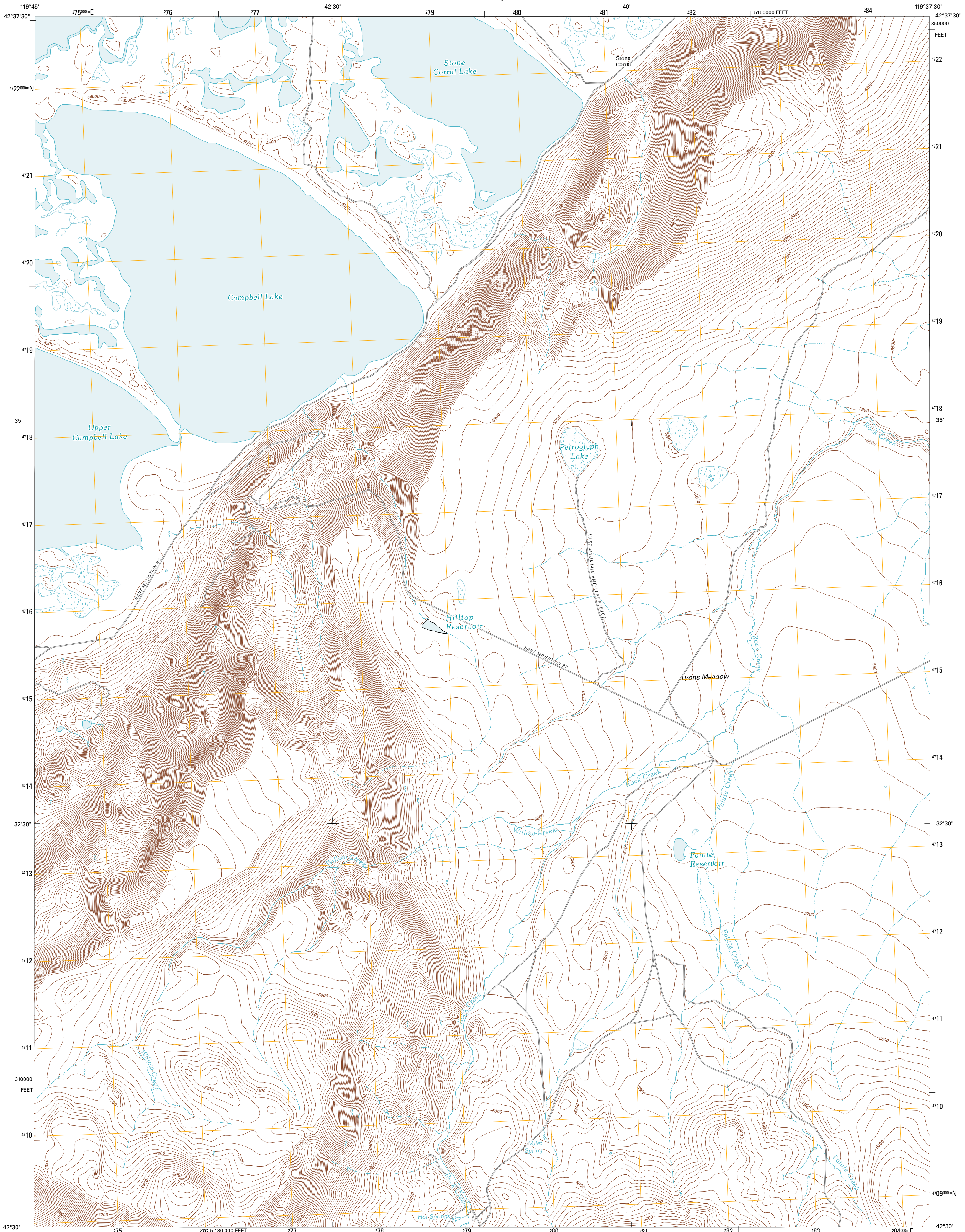




U.S. DEPARTMENT OF THE INTERIOR
U. S. GEOLOGICAL SURVEY

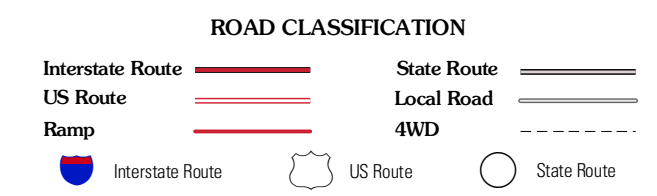
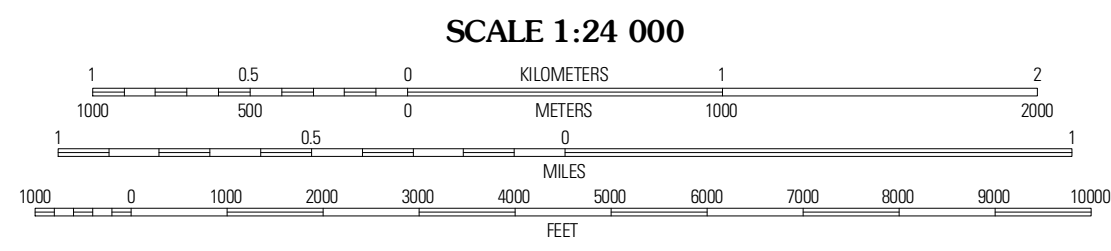
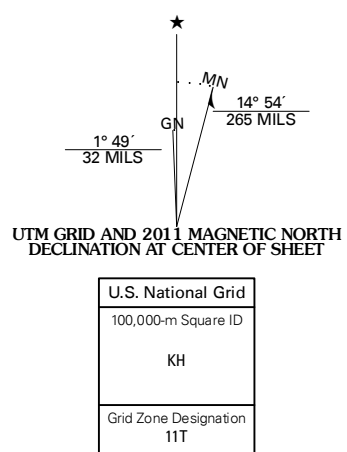


CAMPBELL LAKE QUADRANGLE
OREGON-LAKE CO.
7.5-MINUTE SERIES



Produced by the United States Geological Survey
North American Datum of 1983 (NAD83)
World Geodetic System of 1984 (WGS84). Projection and
1 000-meter grid: Universal Transverse Mercator, Zone 11 T
10 000-foot ticks: Oregon Coordinate System of 1983 (south zone)

Imagery.....NAIP, July 2009
Roads.....©2006-2010 Tele Atlas
Names.....GNIS, 2010
Hydrography.....National Hydrography Dataset, 2009
Contours.....National Elevation Dataset, 2000
Boundaries.....Census, IBWC, IBC, USGS, 1972 - 2010



| | | |
|-----------------|------------------|------------------|
| Rabbit Hills NE | Blount Lake West | Blount Lake East |
| Flagstaff Lake | Campbell Lake | Flook Lake |
| Hart Lake | Warner Peak | Swede Knoll |

CAMPBELL LAKE, OR
2011

ADJOINING 7.5 QUADRANGLES