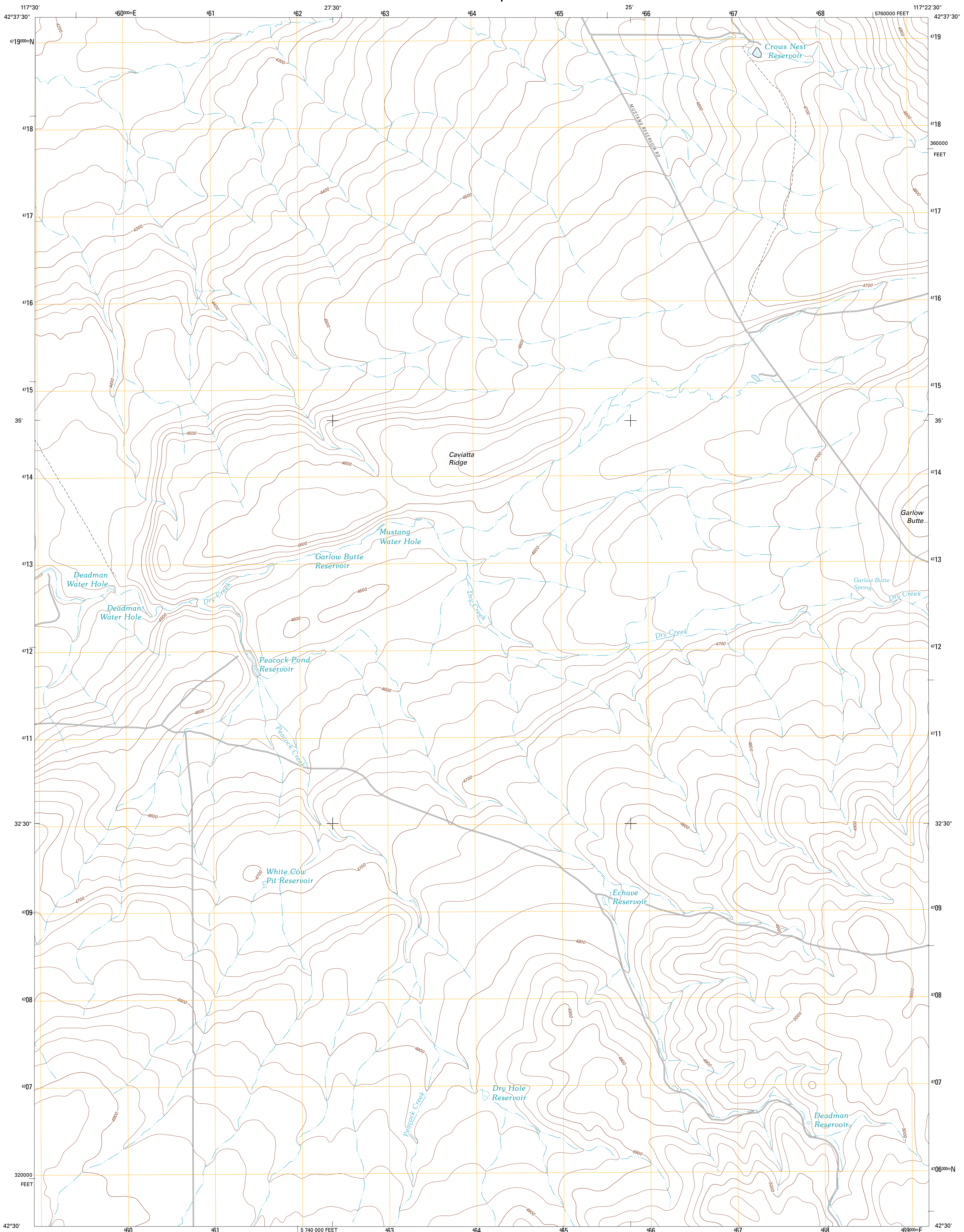




U.S. DEPARTMENT OF THE INTERIOR  
U. S. GEOLOGICAL SURVEY

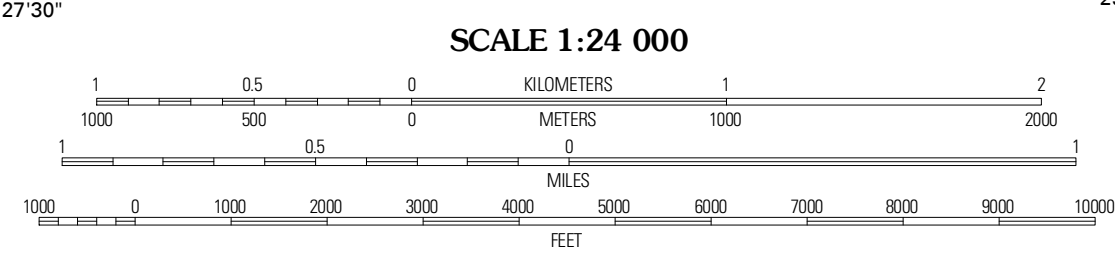
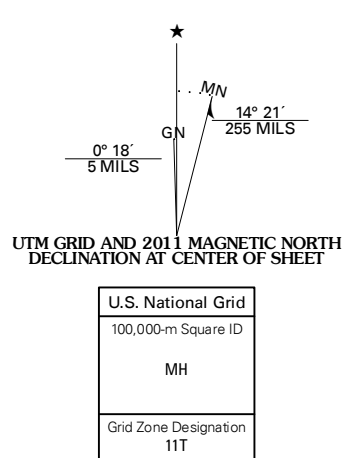


CAVIATTA RIDGE QUADRANGLE  
OREGON-MALHEUR CO.  
7.5-MINUTE SERIES



Produced by the United States Geological Survey  
North American Datum of 1983 (NAD83)  
World Geodetic System of 1984 (WGS84). Projection and  
1000-meter grid: Universal Transverse Mercator, Zone 11T  
10 000-foot ticks: Oregon Coordinate System of 1983 (south  
zone)

Imagery:.....NAP, July 2009  
Roads:.....©2006-2010 Tele Atlas  
Names:.....GNIS, 2010  
Hydrography:.....National Hydrography Dataset, 2009  
Contours:.....National Elevation Dataset, 2000  
Boundaries:.....Census, IBWC, IBC, USGS, 1972 - 2010

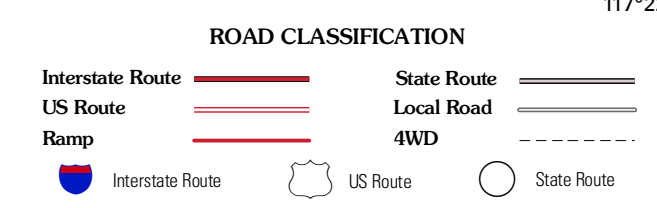


CONTOUR INTERVAL 20 FEET  
NORTH AMERICAN VERTICAL DATUM OF 1988  
This map was produced to conform with version 0.5.10  
of the USGS US Topo Product Standard.  
A metadata file associated with this product is draft version 0.5.16



QUADRANGLE LOCATION

Rockhouse Reservoir	Indian Fort	Skull Creek
Jackies Butte	Caviatta Ridge	Snow Flat
Rattlesnake Canyon	Peacock Lake	No Crossing



CAVIATTA RIDGE, OR  
2011

ADJOINING 7.5 QUADRANGLES