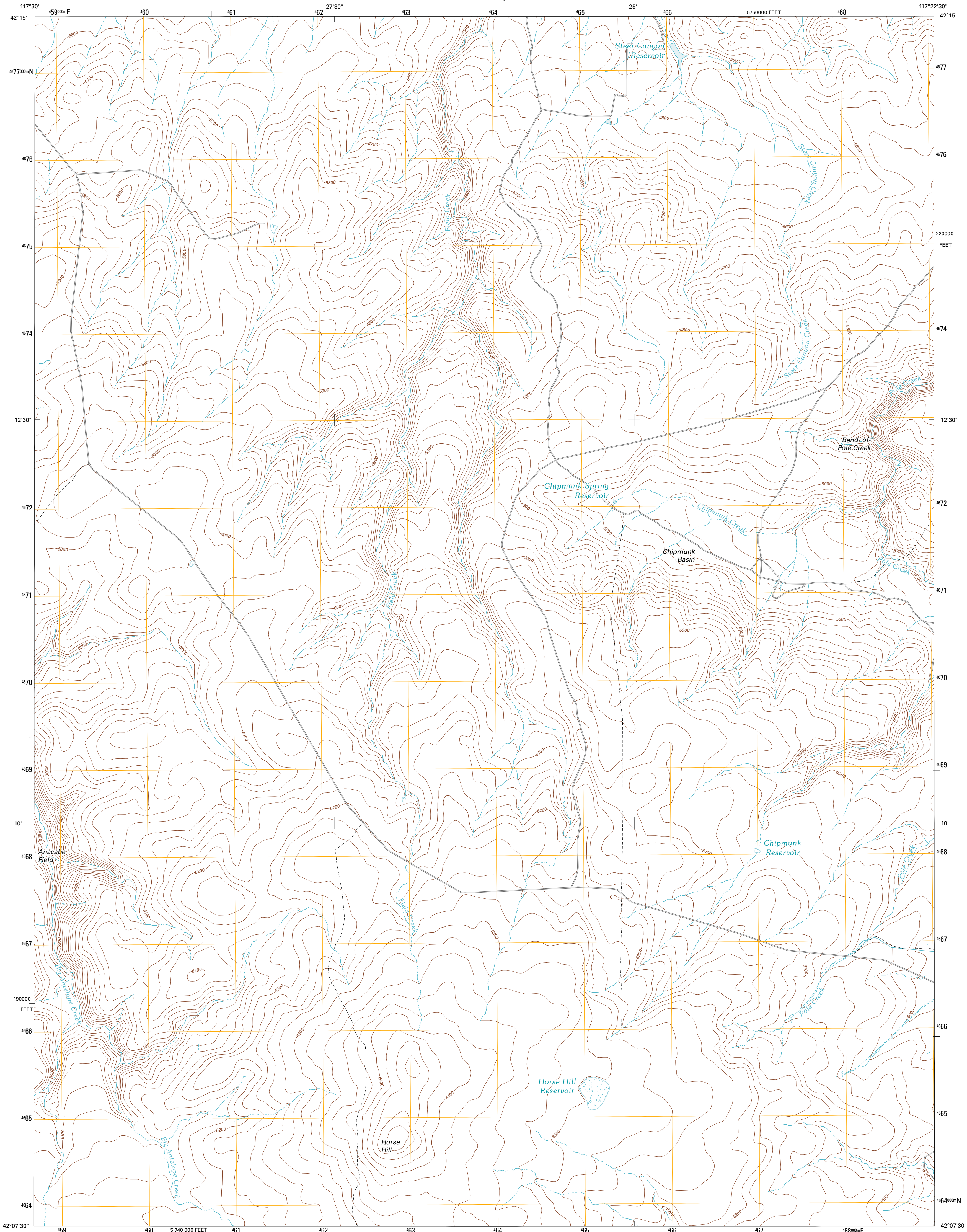




U.S. DEPARTMENT OF THE INTERIOR
U. S. GEOLOGICAL SURVEY



CHIPMUNK BASIN QUADRANGLE
OREGON-MALHEUR CO.
7.5-MINUTE SERIES

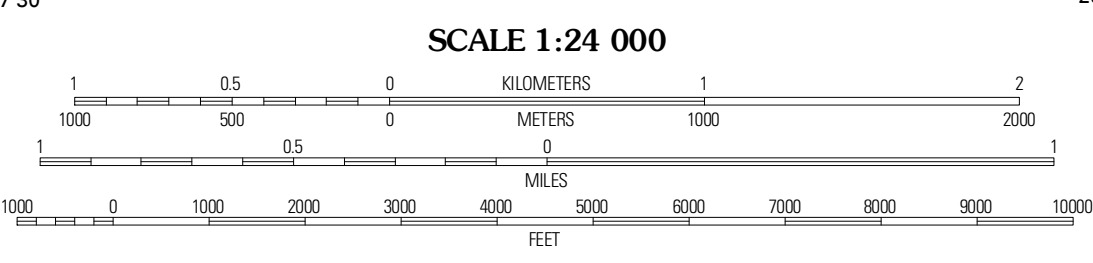


Produced by the United States Geological Survey
North American Datum of 1983 (NAD83)
World Geodetic System of 1984 (WGS84). Projection and
1 000-meter grid. Universal Transverse Mercator, Zone 11T
10 000-foot ticks: Oregon Coordinate System of 1983 (south
zone)

Imagery.....NAP, July 2009
Roads.....©2006-2010 Tele Atlas
Names.....GNIS, 2010
Hydrography.....National Hydrography Dataset, 2009
Contours.....National Elevation Dataset, 2000
Boundaries.....Census, IBWC, BC, USGS, 1972 - 2010

UTM GRID AND 2011 MAGNETIC NORTH DECLINATION AT CENTER OF SHEET

U.S. National Grid
100,000m Square ID
MG
Grid Zone Designator
11T



CONTOUR INTERVAL 20 FEET
NORTH AMERICAN VERTICAL DATUM OF 1988
This map was produced to conform with version 0.5.10
of the USGS US Topo Product Standard.
A metadata file associated with this product is draft version 0.5.16



ROAD CLASSIFICATION

Interstate Route	State Route	Local Road
US Route	4WD	
Ramp	US Route	State Route

Grasshopper Flat North	Starvation Spring	Ravenside Springs
Grasshopper Flat South	Chipmunk Basin	Guadalupe Meadows
Hopkins Springs	Deer Flat	Oregon Butte

ADJOINING 7.5' QUADRANGLES

CHIPMUNK BASIN, OR
2011