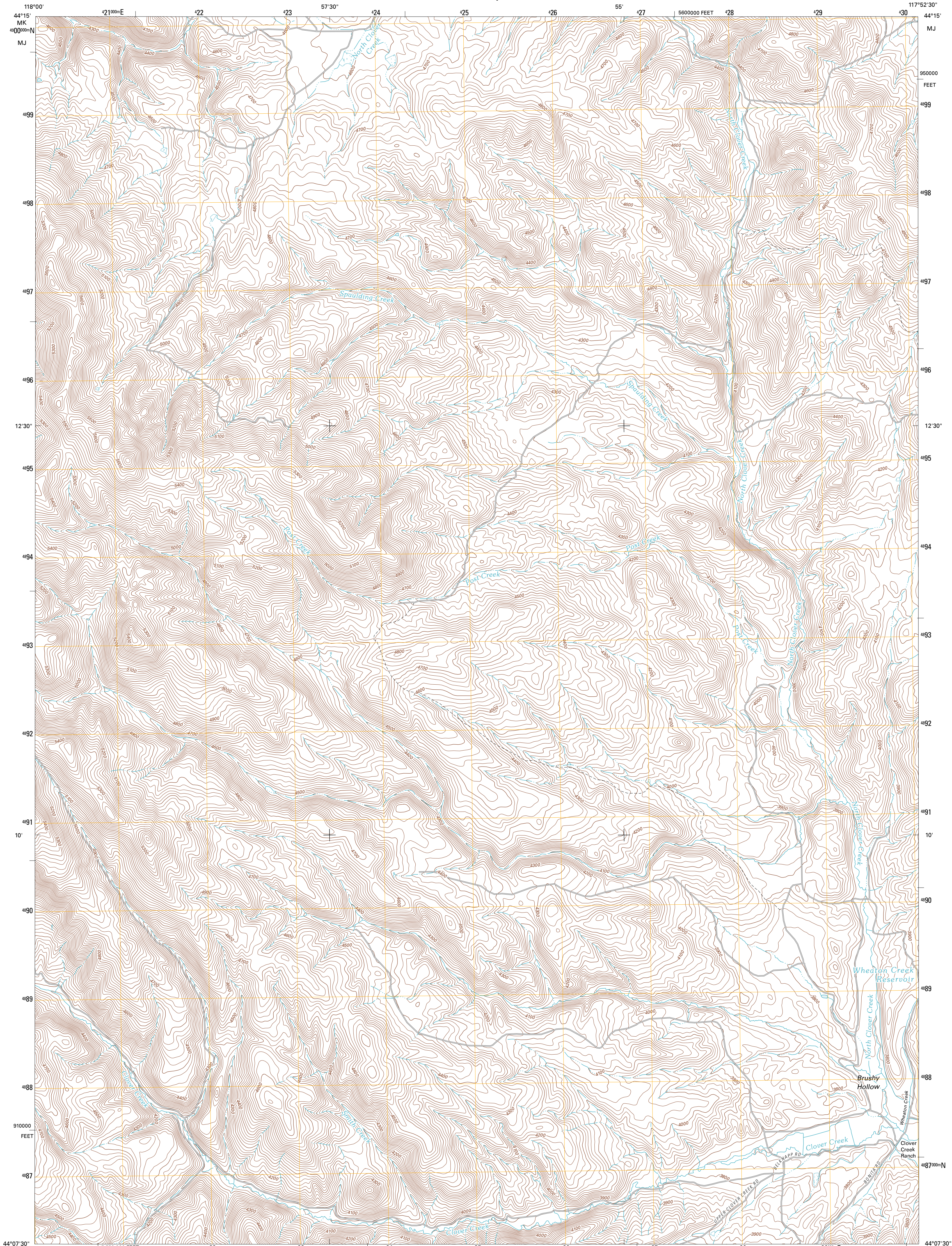




U.S. DEPARTMENT OF THE INTERIOR  
U. S. GEOLOGICAL SURVEY

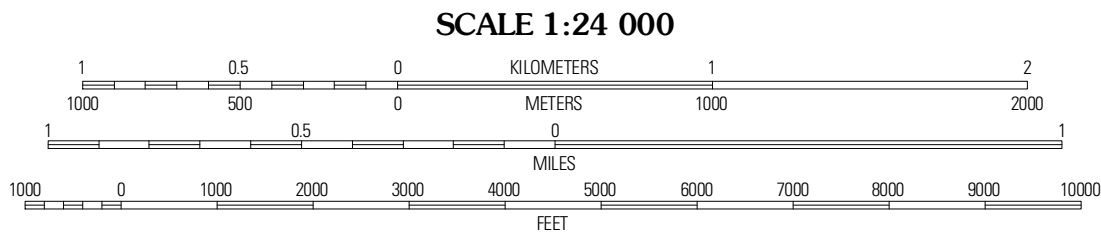
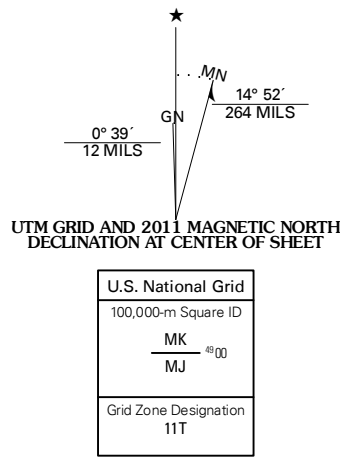


CLOVER CREEK RANCH QUADRANGLE  
OREGON-MALHEUR CO.  
7.5-MINUTE SERIES



Produced by the United States Geological Survey  
North American Datum of 1983 (NAD83)  
World Geodetic System of 1984 (WGS84). Projection and  
1 000-meter grid: Universal Transverse Mercator, Zone 11T  
10 000-foot ticks: Oregon Coordinate System of 1983 (south  
zone)

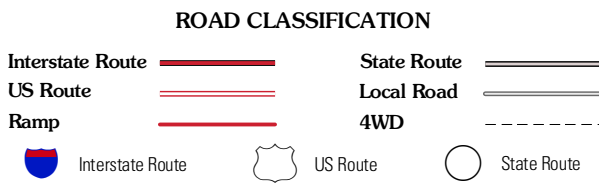
Imagery.....NAIP, July 2009  
Roads.....©2006-2010 Tele Atlas  
Names.....National Hydrography Dataset, 2009  
Contours.....National Elevation Dataset, 2000  
Boundaries.....Census, IBWC, IBC, USGS, 1972 - 2010



CONTOUR INTERVAL 20 FEET  
NORTH AMERICAN VERTICAL DATUM OF 1988  
This map was produced to conform with version 0.5.10  
of the USGS US Topo Product Standard.  
A metadata file associated with this product is draft version 0.5.16



|                    |                             |                       |
|--------------------|-----------------------------|-----------------------|
| Eldorado<br>Pass   | Ironside                    | Cow<br>Valley<br>West |
| De Bod<br>Peaks    | Clover<br>Creek<br>Ranch    | Scratch<br>Post Butte |
| Hunter<br>Mountain | Little<br>Juniper<br>Spring | Log<br>Creek          |



CLOVER CREEK RANCH, OR  
2011