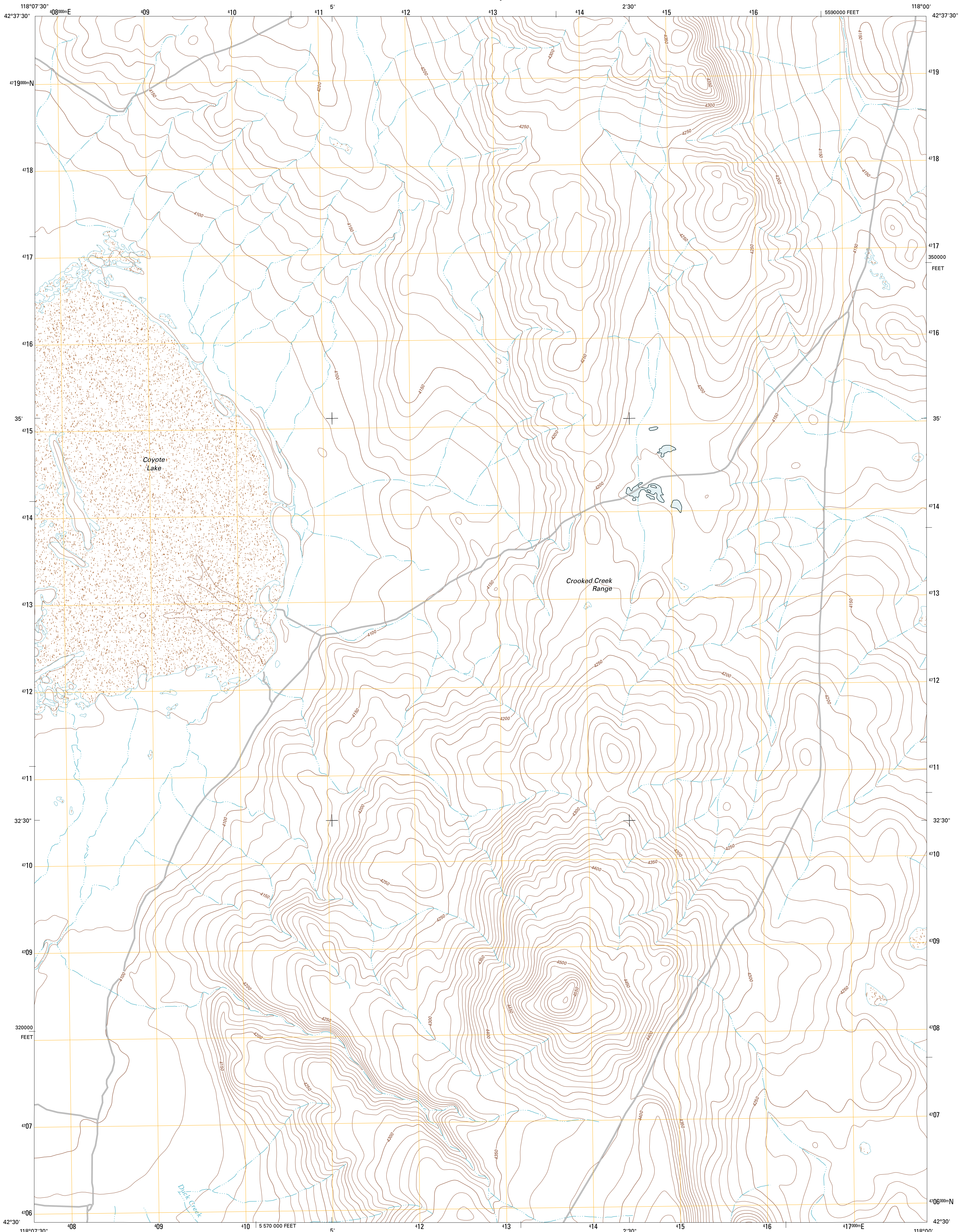




U.S. DEPARTMENT OF THE INTERIOR  
U. S. GEOLOGICAL SURVEY

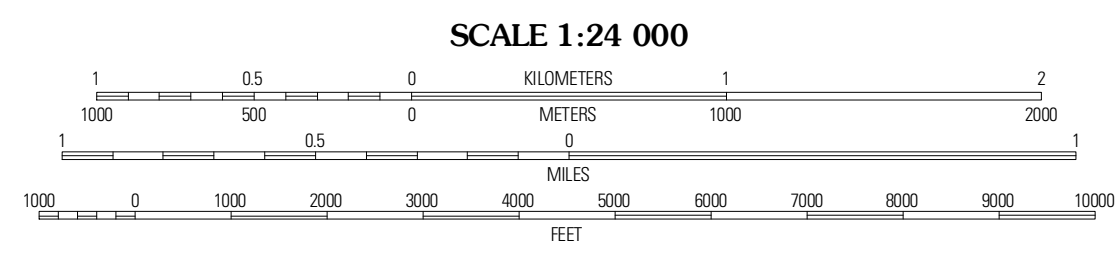
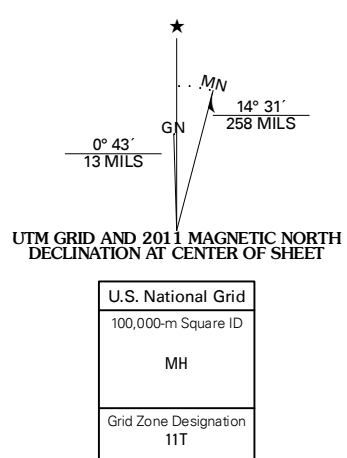


COYOTE LAKE EAST QUADRANGLE  
OREGON-MALHEUR CO.  
7.5-MINUTE SERIES



Produced by the United States Geological Survey  
North American Datum of 1983 (NAD83)  
World Geodetic System of 1984 (WGS84). Projection and  
1000-meter grid: Universal Transverse Mercator, Zone 11T  
10 000-foot ticks: Oregon Coordinate System of 1983 (south  
zone)

Imagery.....N.A.I.P., July 2009  
Roads.....©2006-2010 Tele Atlas  
Names.....GNIS, 2010  
Hydrography.....National Hydrography Dataset, 2009  
Contours.....National Elevation Dataset, 2000  
Boundaries.....Census, IBWC, IBC, USGS, 1972 - 2010



CONTOUR INTERVAL 10 FEET  
NORTH AMERICAN VERTICAL DATUM OF 1988  
This map was produced to conform with version 0.5.10  
of the USGS US Topo Product Standard.  
A metadata file associated with this product is draft version 0.5.16



QUADRANGLE LOCATION

Ancient Lake Well	Grassy Ridge Well	Flat Top Mountain
Coyote Lake West	Coyote Lake East	Rome State Airport
Coyote Meadows	Tweelvile Ridge	Three Man Butte Well

ROAD CLASSIFICATION

Interstate Route	State Route
US Route	Local Road
Ramp	4WD

COYOTE LAKE EAST, OR  
2011

ADJOINING 7.5 QUADRANGLES