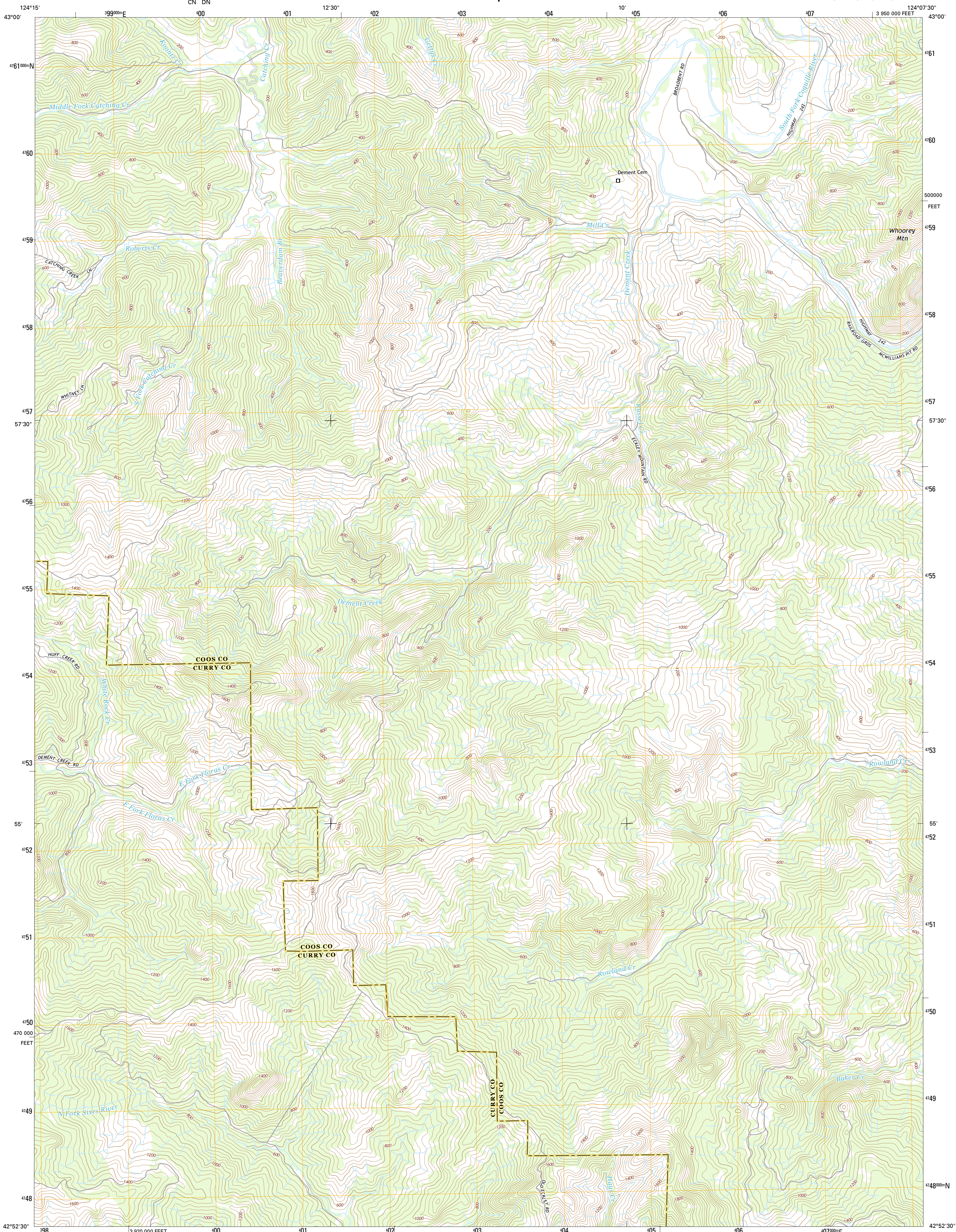




U.S. DEPARTMENT OF THE INTERIOR  
U.S. GEOLOGICAL SURVEY



DEMENT CREEK QUADRANGLE  
OREGON  
7.5-MINUTE SERIES

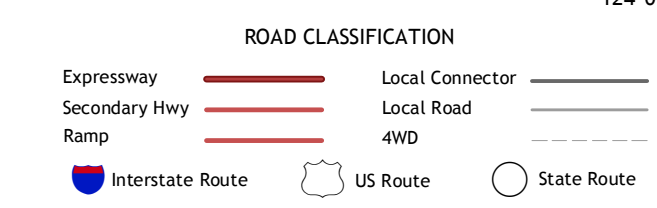
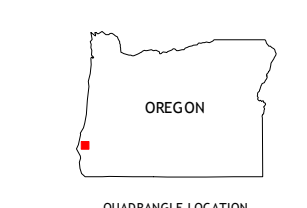
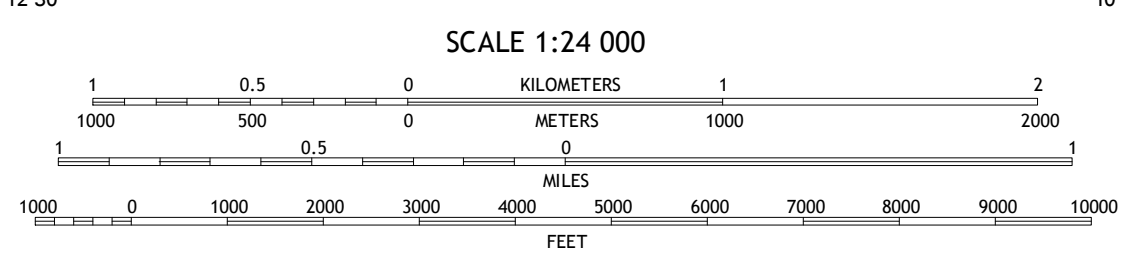
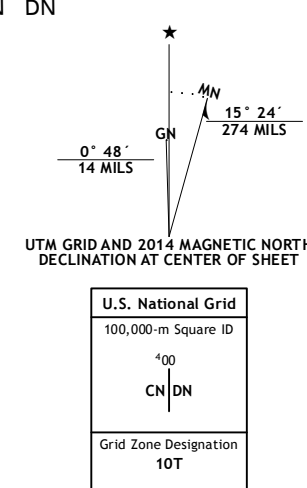


Produced by the United States Geological Survey

North American Datum of 1983 (NAD83)  
World Geodetic System of 1984 (WGS84), Projection and  
1 000-meter grid: Universal Transverse Mercator, Zone 10T  
10 000-foot ticks: Oregon Coordinate System of 1983 (south  
zone)

This map is not a legal document. Boundaries may be  
generalized for this map scale. Private lands within government  
reservations may not be shown. Obtain permission before  
entering private lands.

Imagery.....N.A.P., June 2012  
Roads.....HERE, ©2013  
Names.....GNIS, 2013  
Hydrography.....National Hydrography Dataset, 2012  
Contours.....National Elevation Dataset, 2000  
Boundaries.....Multiple sources; see metadata file 1972 - 2013  
Public Land Survey System.....BLM, 2011



ADJOINING QUADRANGLES

1	2	3
4	5	
6	7	8

1 Bill Peak  
2 Myrtle Point  
3 Bridge  
4 Call Ranch Mountain  
5 Powers  
6 Mount Butler  
7 Barklow Mountain  
8 China Flat

DEMENT CREEK, OR  
2014

