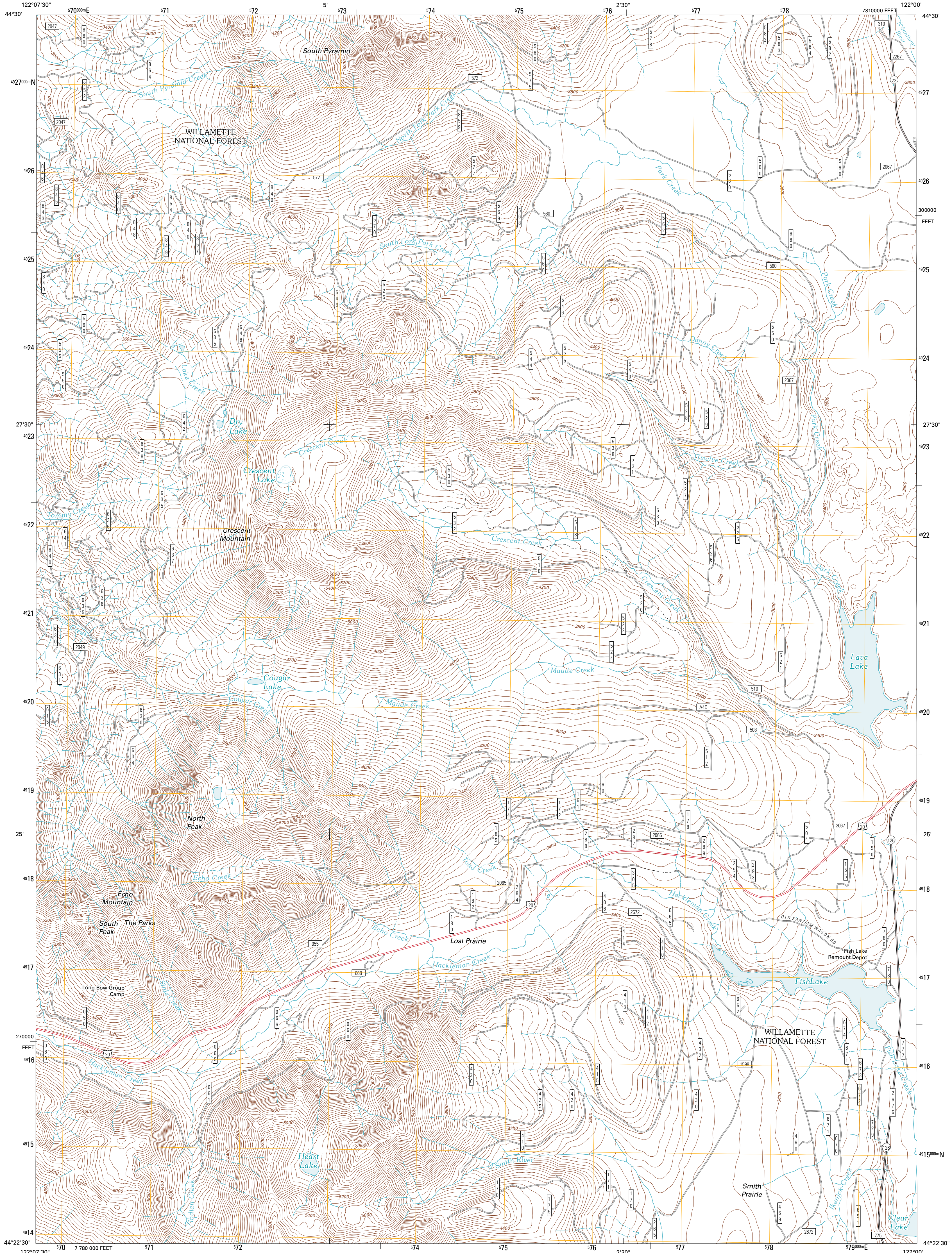




U.S. DEPARTMENT OF THE INTERIOR  
U. S. GEOLOGICAL SURVEY

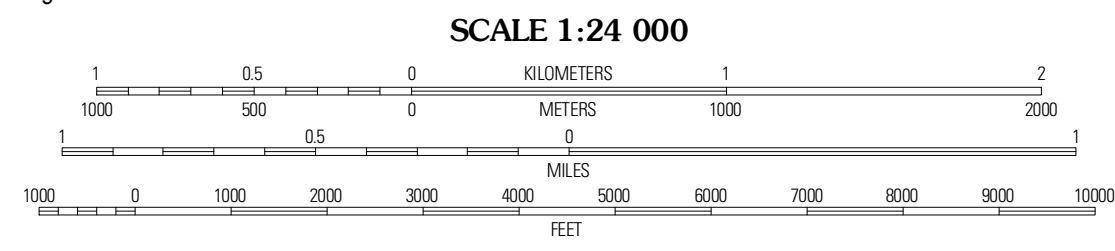
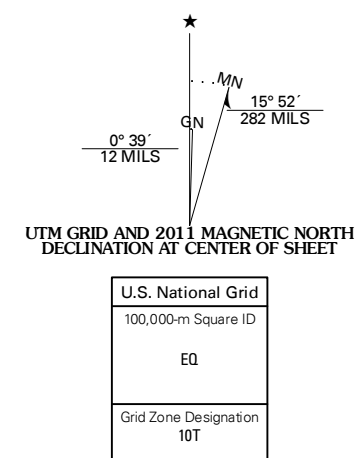


ECHO MOUNTAIN QUADRANGLE  
OREGON-LINN CO.  
7.5-MINUTE SERIES

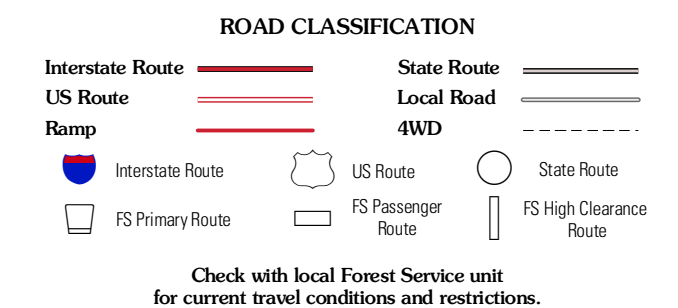
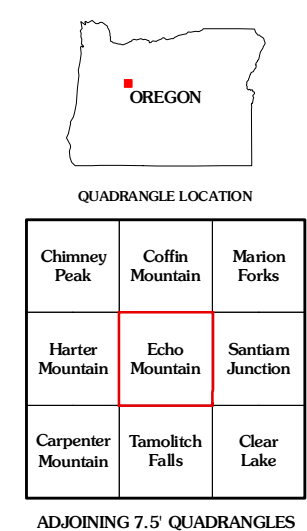


Produced by the United States Geological Survey  
North American Datum of 1983 (NAD83)  
World Geodetic System of 1984 (WGS84). Projection and  
1 000-meter grid: Universal Transverse Mercator, Zone 10T  
10 000-foot ticks: Oregon Coordinate System of 1983 (north zone)

Imagery: NAIIP, June 2009  
Roads: 2006-2010 File Atlas  
Roads within US Forest Service Lands: FSTopo Data  
with limited Forest Service updates, 2009  
Names: GNIS, 2010  
Hydrography: National Hydrography Dataset, 2009  
Contours: National Elevation Dataset, 1999  
Boundaries: Census, IBWC, IBC, USGS, 1972 - 2010



CONTOUR INTERVAL 40 FEET  
NORTH AMERICAN VERTICAL DATUM OF 1988  
This map was produced to conform with version 0.5.10  
of the USGS US Topo Product Standard.  
A metadata file associated with this product is draft version 0.5.16



Check with local Forest Service unit  
for current travel conditions and restrictions.

ECHO MOUNTAIN, OR  
2011

ADJOINING 7.5 QUADRANGLES		
Chimney Peak	Coffin Mountain	Morton Forks
Harter Mountain	Echo Mountain	Santam Junction
Carpenter Mountain	Tamolith Falls	Clear Lake