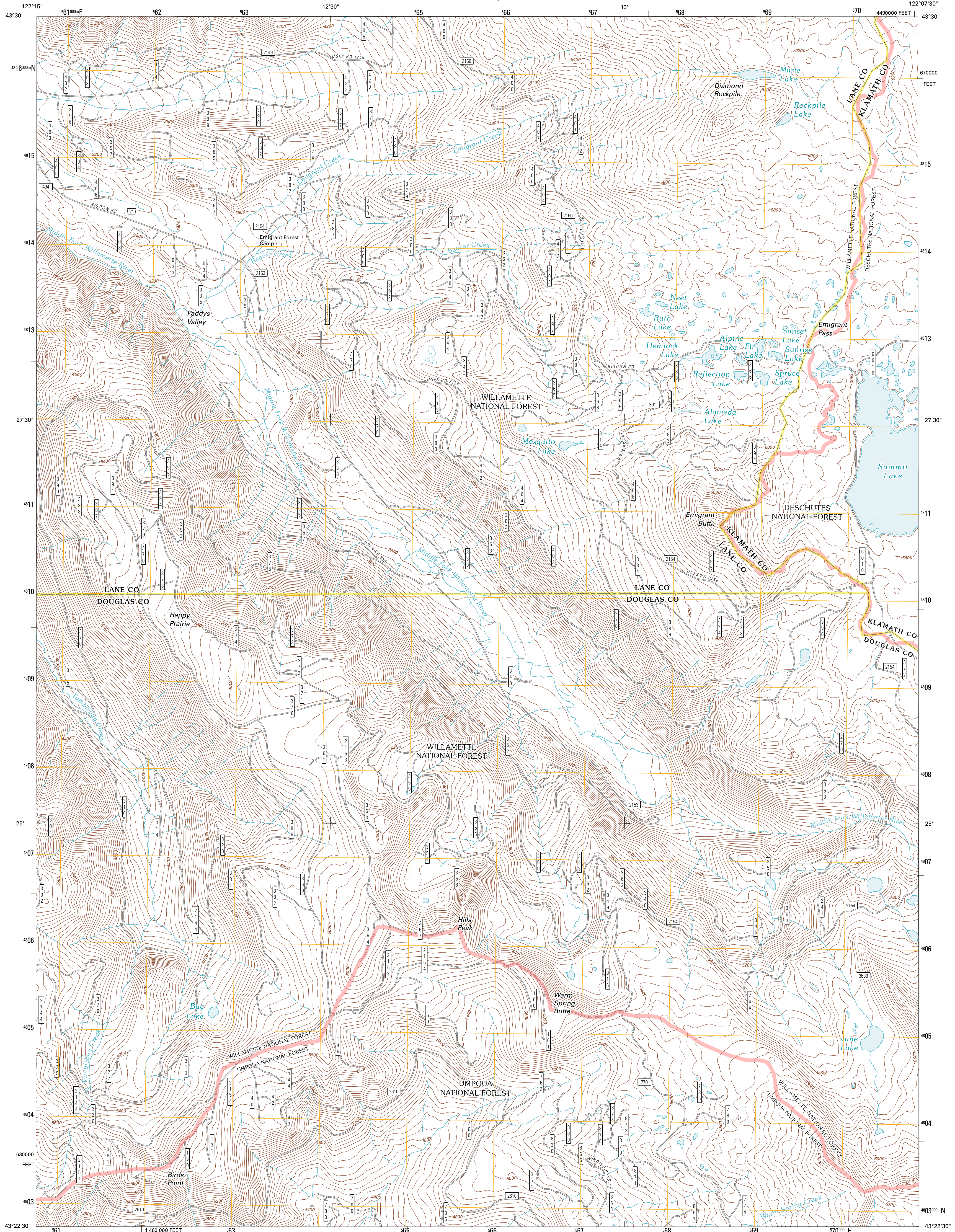




U.S. DEPARTMENT OF THE INTERIOR
U. S. GEOLOGICAL SURVEY

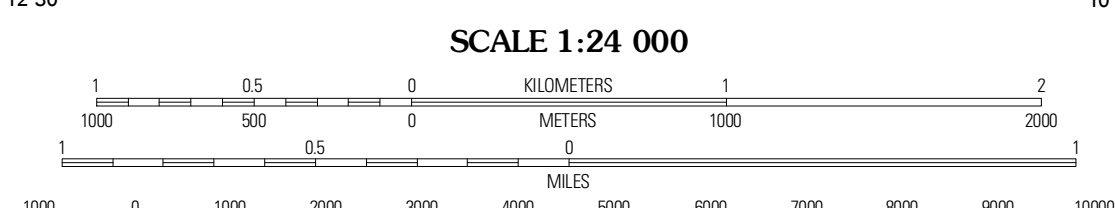
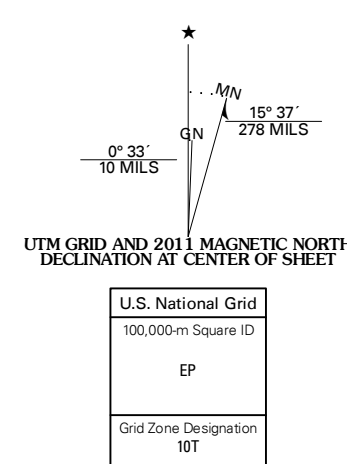


EMIGRANT BUTTE QUADRANGLE
OREGON
7.5-MINUTE SERIES



Produced by the United States Geological Survey
North American Datum of 1983 (NAD83)
World Geodetic System of 1984 (WGS84). Projection and
1 000-meter grid: Universal Transverse Mercator, Zone 10T
10 000-foot ticks: Oregon Coordinate System of 1983 (south zone)

Imagery: N.A.P., June 2009 - July 2009
Roads: ©2006-2010 Tele Atlas
Roads within US Forest Service Lands: FSTopo Data
with limited Forest Service updates, 2009
Names: G.N.S., 2010
Hydrography: National Hydrography Dataset, 2009
Contours: National Elevation Dataset, 1999
Boundaries: Census, IBWC, IBC, USGS, 1972 - 2010



QUADRANGLE LOCATION

Groundhog Mountain	Diamond Peak	Willamette Pass
Region Point	Emigrant Butte	Cowhorn Mountain
Petter Mountain	Lemola Lake	Tolo Mountain

ROAD CLASSIFICATION

Interstate Route State Route

US Route Local Road

Ramp 4WD

Interstate Route US Route

FS Primary Route FS Passenger Route

FS High Clearance Route

Check with local Forest Service unit for current travel conditions and restrictions.

EMIGRANT BUTTE, OR
2011

ADJOINING 7.5 QUADRANGLES