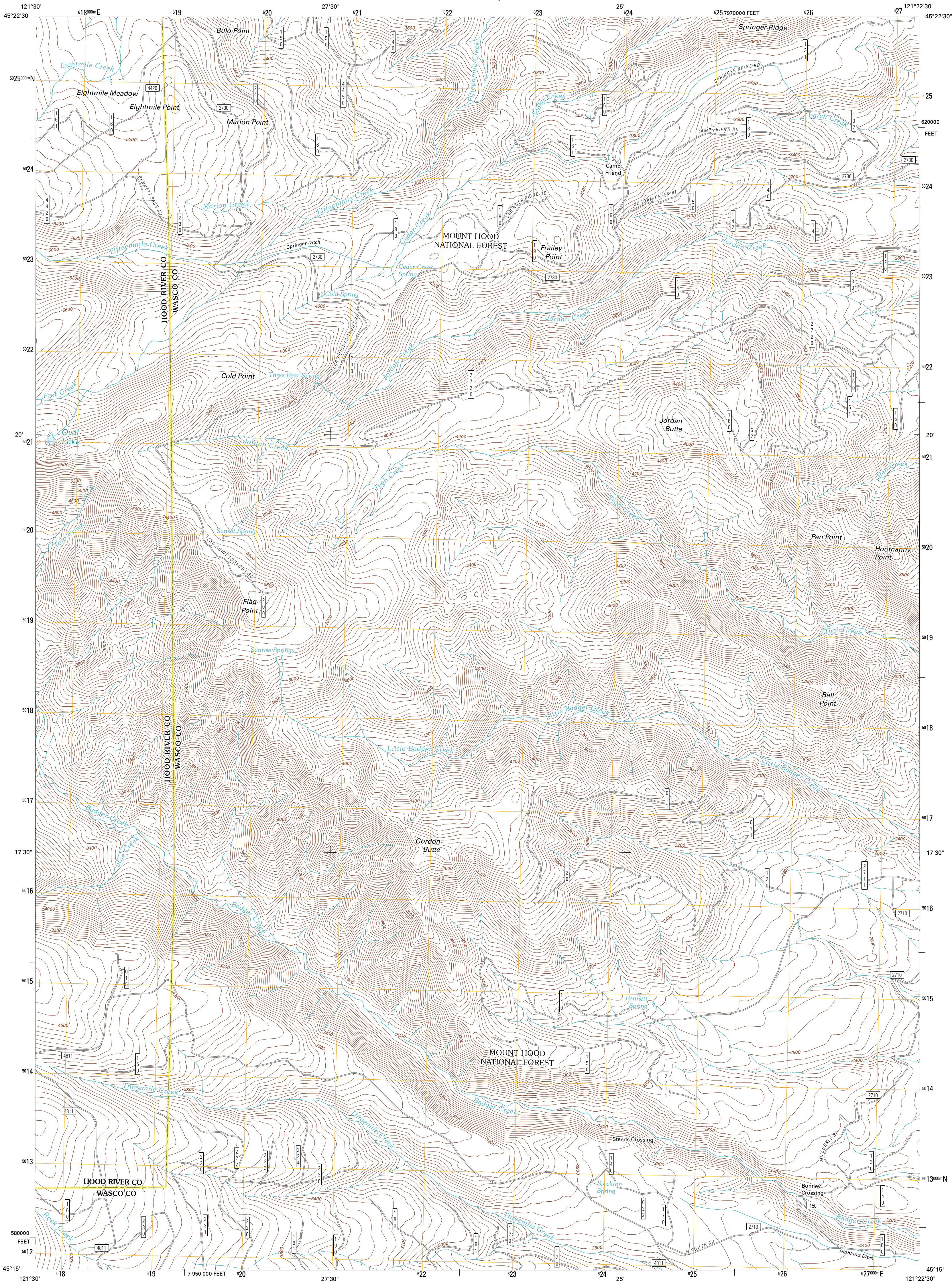




U.S. DEPARTMENT OF THE INTERIOR  
U. S. GEOLOGICAL SURVEY

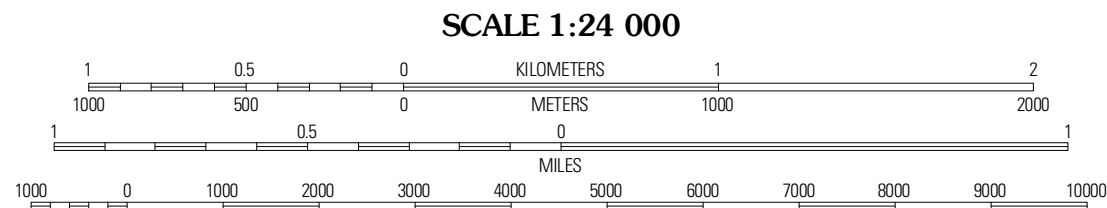
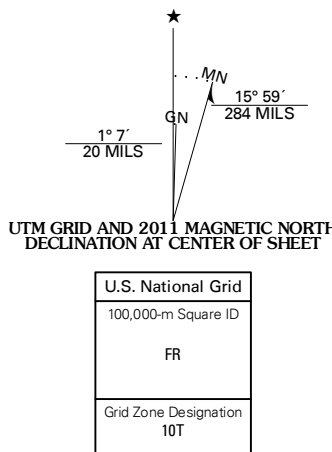


FLAG POINT QUADRANGLE  
OREGON  
7.5-MINUTE SERIES



Produced by the United States Geological Survey  
North American Datum of 1983 (NAD83)  
World Geodetic System of 1984 (WGS84). Projection and  
1 000-meter grid. Universal Transverse Mercator, Zone 10T  
10 000-foot ticks. Oregon Coordinate System of 1983 (north  
zone)

Imagery.....NAP, June 2009 - July 2009  
Roads.....2006-2010 Tele Atlas  
Roads within US Forest Service Lands.....FSTopo Data  
with United Forest Service updates, 2009  
Names.....GNIS, 2010  
Hydrography.....National Hydrography Dataset, 2009  
Contours.....National Elevation Dataset, 1999  
Boundaries.....Census, IBWC, IBC, USGS, 1972 - 2010



CONTOUR INTERVAL 40 FEET  
NORTH AMERICAN VERTICAL DATUM OF 1988  
This map was produced to conform with version 0.5.10  
of the USGS US Topo Product Standard.  
A metadata file associated with this product is draft version 0.5.16



Flag River	Friend Butte	Wolf Run
Badger Lake	Flag Point	Friend
Post Point	Rock Creek Reservoir	Wamic

ROAD CLASSIFICATION	
Interstate Route	State Route
US Route	Local Road
Ramp	4WD
Interstate Route	US Route
FS Primary Route	FS Passenger Route
	FS High Clearance Route

Check with local Forest Service unit  
for current travel conditions and restrictions.

FLAG POINT, OR  
2011