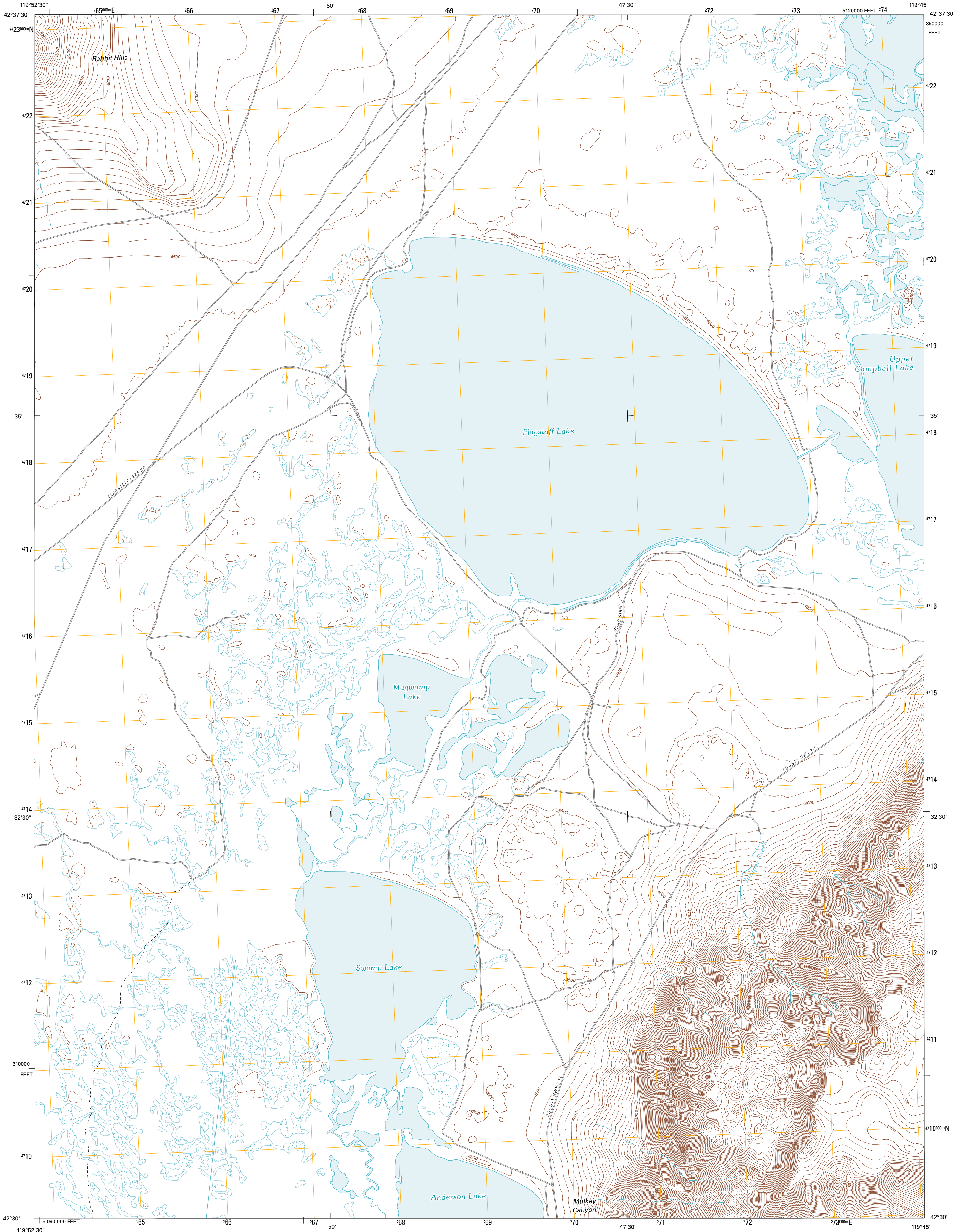




U.S. DEPARTMENT OF THE INTERIOR  
U. S. GEOLOGICAL SURVEY

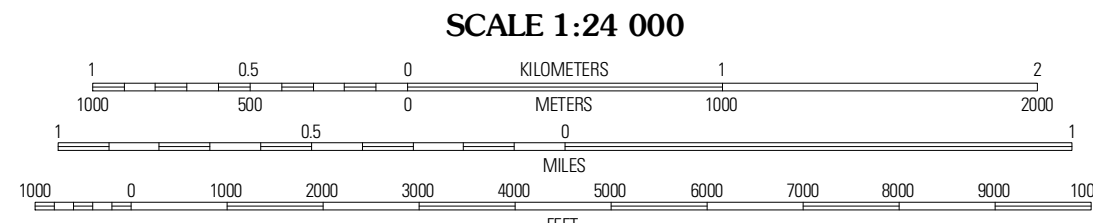
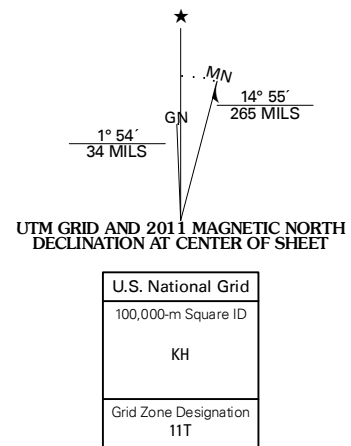


FLAGSTAFF LAKE QUADRANGLE  
OREGON-LAKE CO.  
7.5-MINUTE SERIES



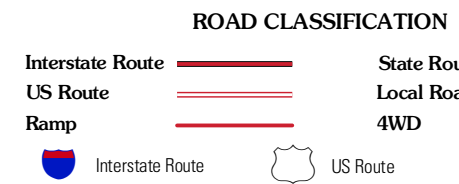
Produced by the United States Geological Survey  
North American Datum of 1983 (NAD83)  
World Geodetic System of 1984 (WGS84). Projection and  
1 000-meter grid: Universal Transverse Mercator, Zone 11T  
10 000-foot ticks: Oregon Coordinate System of 1983 (south  
zone)

Imagery.....NAIP, July 2009  
Roads.....©2006-2010 Tele Atlas  
Names.....GNIS, 2010  
Hydrography.....National Hydrography Dataset, 2009  
Contours.....National Elevation Dataset, 2000  
Boundaries.....Census, IBWC, IBC, USGS, 1972 - 2010



CONTOUR INTERVAL 20 FEET  
NORTH AMERICAN VERTICAL DATUM OF 1988

This map was produced to conform with version 0.5.10  
of the USGS US Topo Product Standard.  
A metadata file associated with this product is draft version 0.5.16



Rabbit Hills NW	Rabbit Hills NE	Bluejoint Lake West
Rabbit Hills SW	Flagstaff Lake	Campbell Lake
Push	Hart Lake	Warner Peak

ADJOINING 7.5 QUADRANGLES

FLAGSTAFF LAKE, OR  
2011