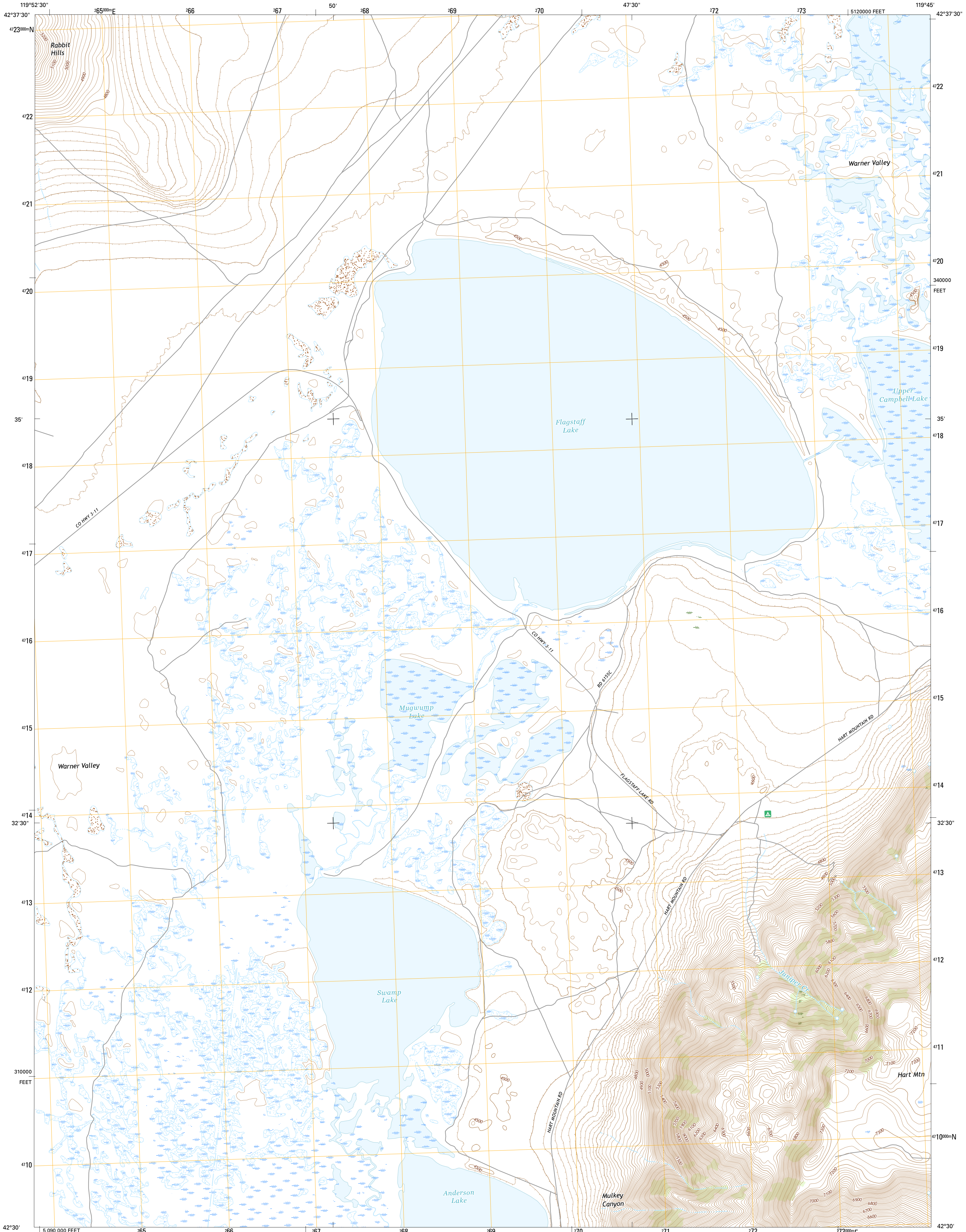




U.S. DEPARTMENT OF THE INTERIOR  
U.S. GEOLOGICAL SURVEY



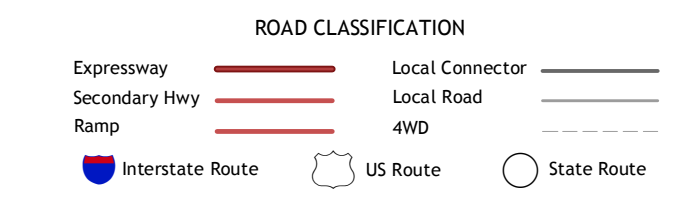
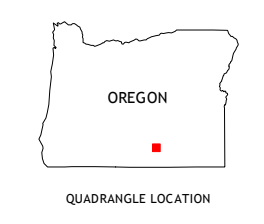
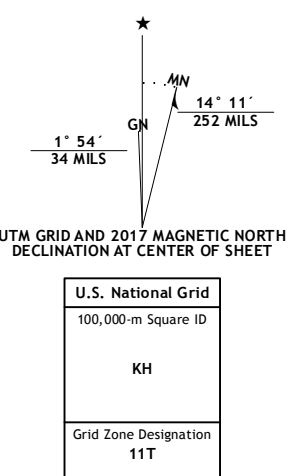
FLAGSTAFF LAKE QUADRANGLE  
OREGON-LAKE CO.  
7.5-MINUTE SERIES



Produced by the United States Geological Survey  
North American Datum of 1983 (NAD83)  
World Geodetic System of 1984 (WGS84), Projection and  
1 000-meter grid: Universal Transverse Mercator, Zone 11T  
10 000-foot ticks: Oregon Coordinate System of 1983 (south zone)

This map is not a legal document. Boundaries may be generalized for this map scale. Private lands within government reservations may not be shown. Obtain permission before entering private lands.

Imagery.....NAIP, November 2014  
Roads.....U.S. Census Bureau, 2015 - 2016  
Names.....National Hydrography Dataset, 2014  
Hydrography.....National Hydrography Dataset, 2014  
Contours.....National Elevation Dataset, 2000  
Boundaries.....Multiple sources; see metadata file 1972 - 2016  
Public Land Survey System.....BLM, 2016  
Wetlands.....FWS National Wetlands Inventory 1977 - 2014



1	2	3
4	5	6
7	8	

1 Rabbit Hills NW  
2 Rabbit Hills NE  
3 Bluejoint Lake West  
4 Rabbit Hills SW  
5 Campbell Lake  
6 Push Lake  
7 Hart Lake  
8 Warner Peak

FLAGSTAFF LAKE, OR  
2017

