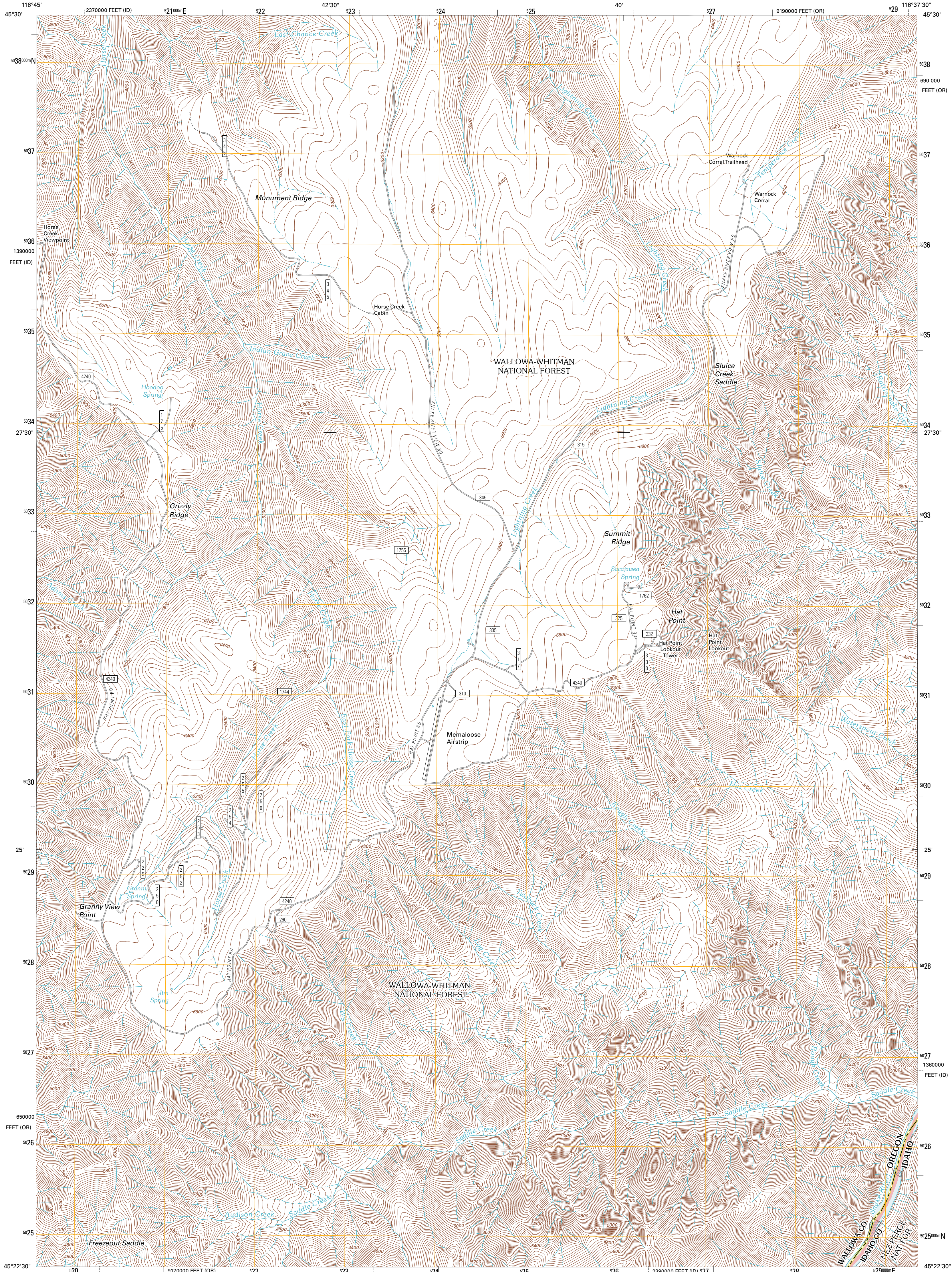




U.S. DEPARTMENT OF THE INTERIOR
U. S. GEOLOGICAL SURVEY

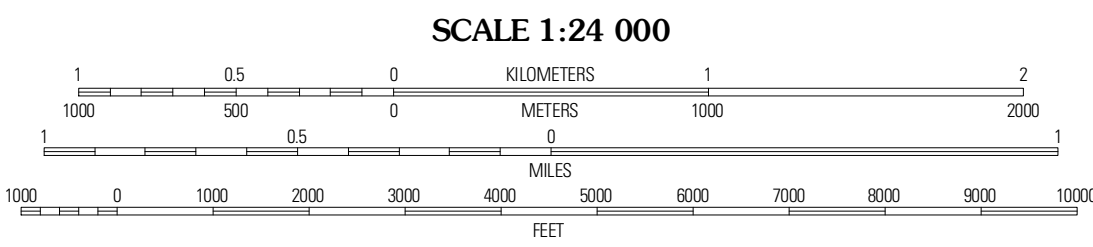
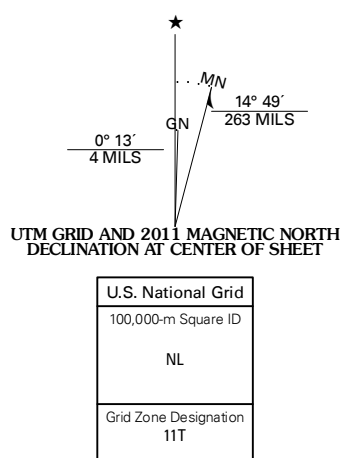


HAT POINT QUADRANGLE
OREGON-IDAHO
7.5-MINUTE SERIES



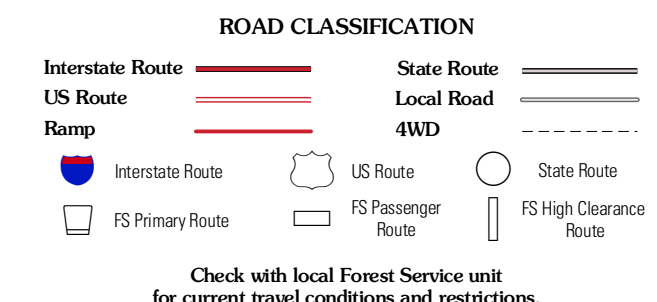
Produced by the United States Geological Survey
North American Datum of 1983 (NAD83)
World Geodetic System of 1984 (WGS84). Projection and
1 000-meter grid: Universal Transverse Mercator, Zone 11T
10 000-foot ticks: Oregon Coordinate System of 1983 (north
zone), Idaho Coordinate System of 1983 (west zone)

Images: NAD, July 2009
Roads: 2006-2010 1:50,000 Topo Data
with limited Forest Service updates, 2009
Names: GNS, 2010
Hydrography: National Hydrography Dataset, 2009
Contours: National Elevation Dataset, 2000
Boundaries: Census, BWC, IBC, USGS, 1972 - 2010



| | | |
|--------------------|------------------|--------------------|
| Imnaha | Sheep Ridge | Tempessence Creek |
| Sheep Creek Divide | Hat Point | Old Timer Mountain |
| Jaynes Ridge | Squirrel Prairie | He Devil |

ADJOINING 7.5 QUADRANGLES



HAT POINT, OR-ID
2011