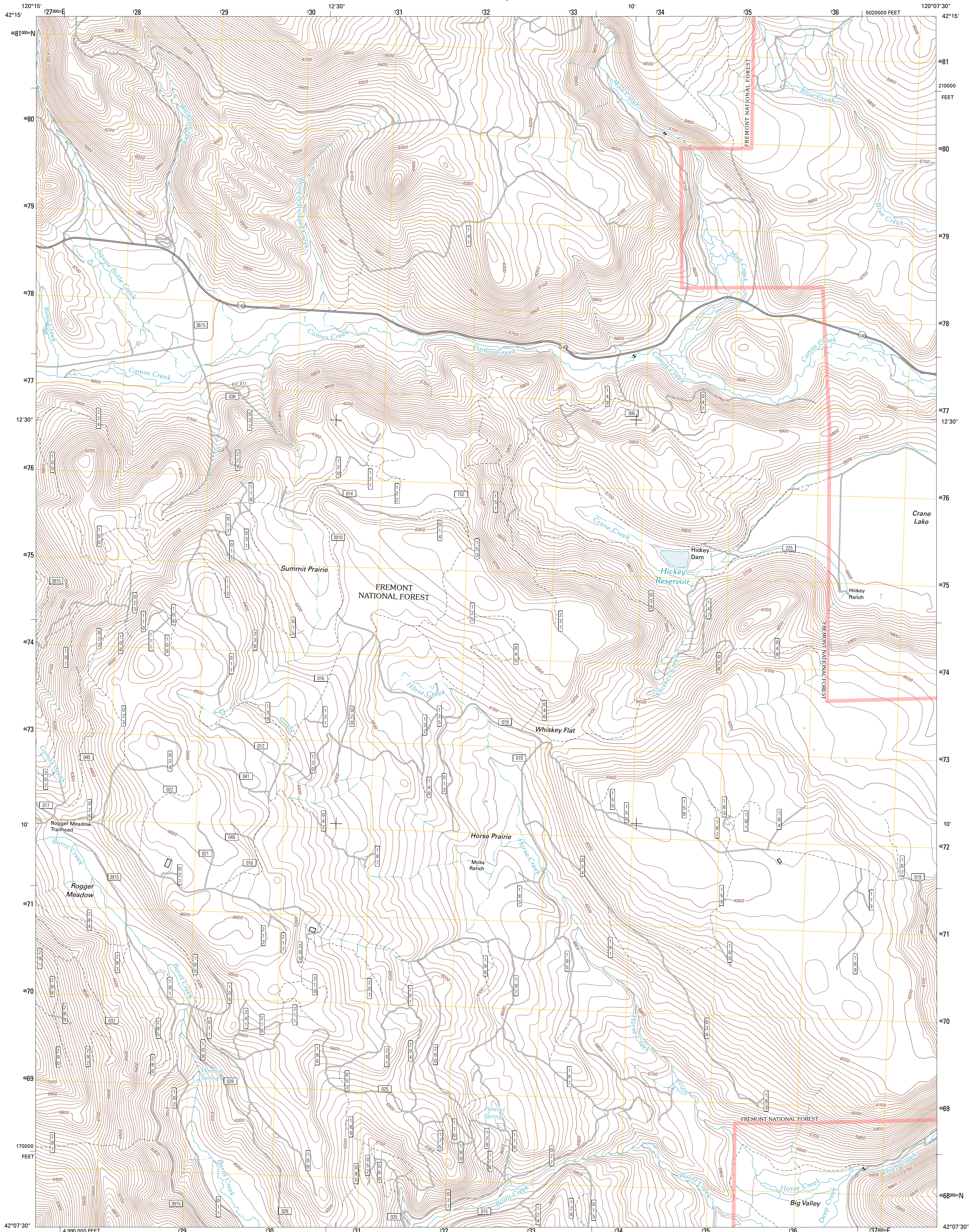




U.S. DEPARTMENT OF THE INTERIOR  
U. S. GEOLOGICAL SURVEY

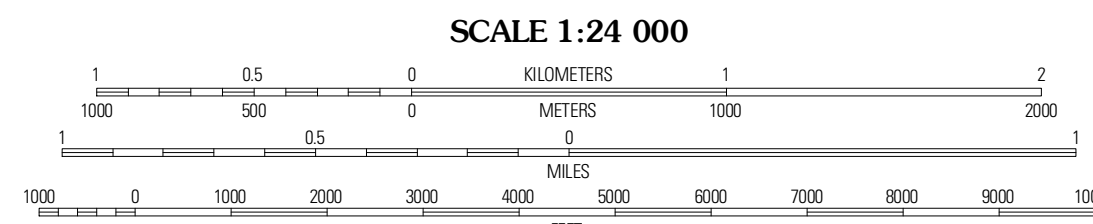
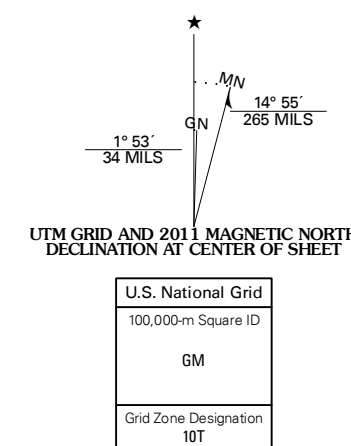


HORSE PRAIRIE QUADRANGLE  
OREGON-LAKE CO.  
7.5-MINUTE SERIES



Produced by the United States Geological Survey  
North American Datum of 1983 (NAD83)  
World Geodetic System of 1984 (WGS84). Projection and  
1 000-meter grid: Universal Transverse Mercator, Zone 10T  
10 000-foot ticks: Oregon Coordinate System of 1983 (south  
zone)

Imagery: NADP, July 2009  
Roads: 02/06-2010 Tele Atlas  
Roads within US Forest Service Lands: FSTopo Data  
with limited Forest Service updates, 2009  
Names: GNIS, 2010  
Hydrography: National Hydrography Dataset, 2009  
Contours: National Elevation Dataset, 1999  
Boundaries: Census, IBWC, IBC, USGS, 1972 - 2010



SCALE 1:24 000  
CONTOUR INTERVAL 20 FEET  
NORTH AMERICAN VERTICAL DATUM OF 1988  
This map was produced to conform with version 0.5.10  
of the USGS US Topo Product Standard.  
A metadata file associated with this product is draft version 0.5.16



QUADRANGLE LOCATION

Crooked Creek Valley	Crook Peak	Drake Peak
Lakeview	Horse Prairie	Sage Hen Butte
Crane Creek	Crane Mountain	Collins Rm

**ROAD CLASSIFICATION**

Interstate Route	State Route	Local Road
US Route	State Route	4WD
Ramp	US Route	FS Passenger Route
Interstate Route	FS Primary Route	FS High Clearance Route

Check with local Forest Service unit  
for current travel conditions and restrictions.

HORSE PRAIRIE, OR  
2011

ADJOINING 7.5 QUADRANGLES