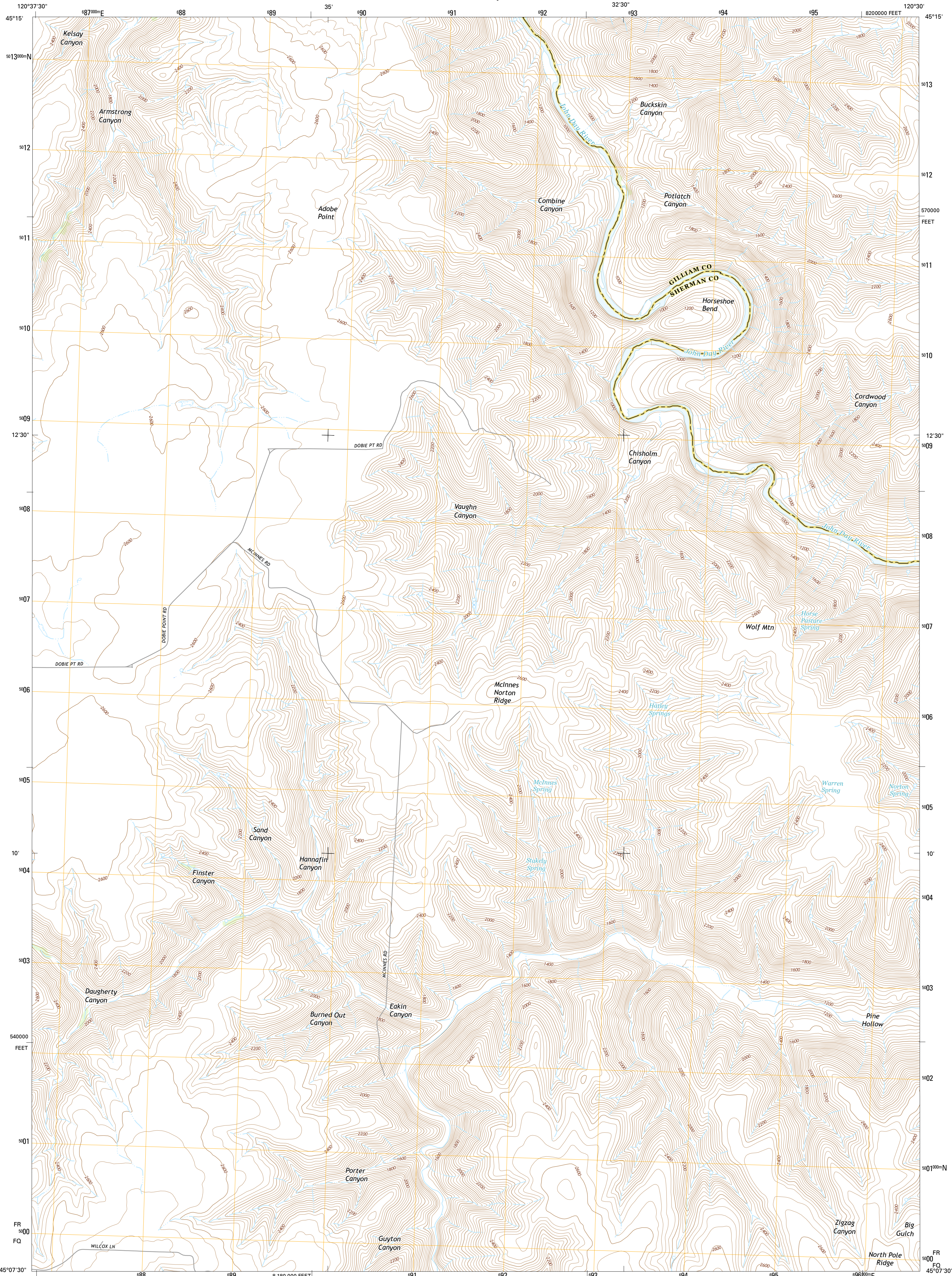




U.S. DEPARTMENT OF THE INTERIOR
U.S. GEOLOGICAL SURVEY



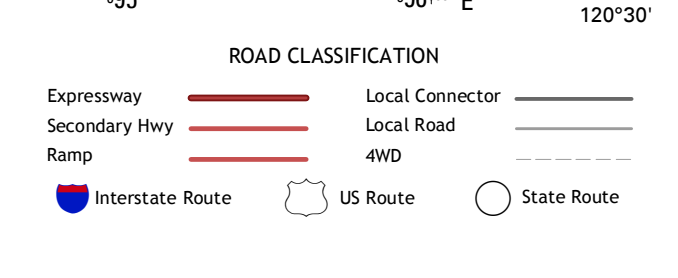
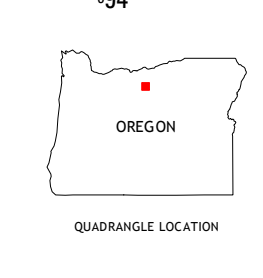
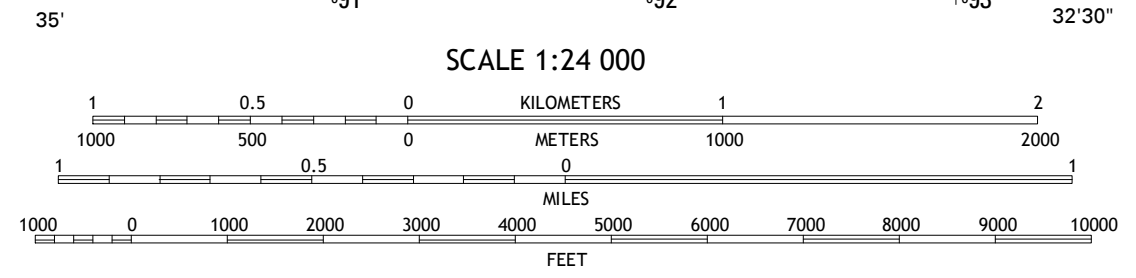
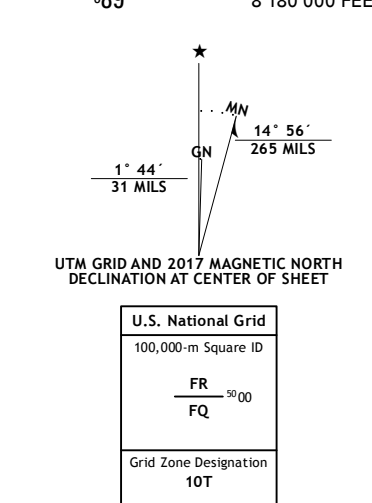
HORSESHOE BEND QUADRANGLE
OREGON
7.5-MINUTE SERIES



Produced by the United States Geological Survey
North American Datum of 1983 (NAD83)
World Geodetic System of 1984 (WGS84). Projection and
1 000-meter grid: Universal Transverse Mercator, Zone 10T
10 000-foot ticks: Oregon Coordinate System of 1983 (north
zone)

This map is not a legal document. Boundaries may be
generalized for this map scale. Private lands within government
reservations may not be shown. Obtain permission before
entering private lands.

Imagery.....NAIP, October 2014
Roads.....U.S. Census Bureau, 2015 - 2016
Names.....GNS, 2016
Hydrography.....National Hydrography Dataset, 2014
Contours.....National Elevation Dataset, 2000
Boundaries.....Multiple sources; see metadata file 1972 - 2016
Public Land Survey System.....BLM, 2016
Wetlands.....FWS National Wetlands Inventory 1977 - 2014



1	2	3
4	5	6
7	8	9

ADJOINING QUADRANGLES

- 1 Rosebush
- 2 Indian Cove
- 3 Indian Spring
- 4 Kent
- 5 Shoestring Ridge
- 6 Macken Canyon
- 7 Bath Canyon
- 8 Chimney Springs

HORSESHOE BEND, OR
2017

