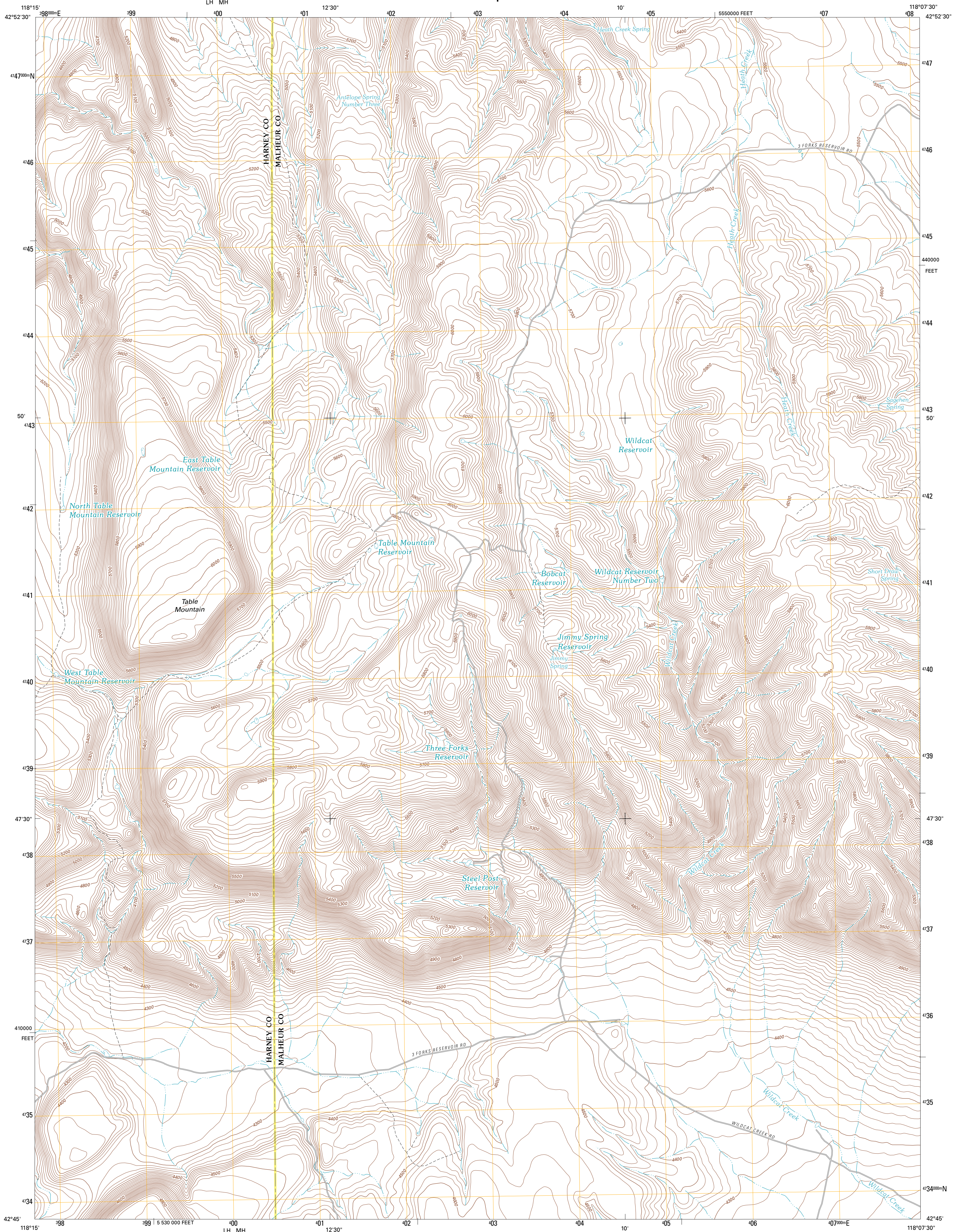




U.S. DEPARTMENT OF THE INTERIOR  
U. S. GEOLOGICAL SURVEY

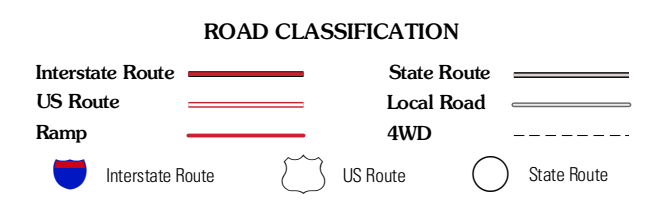
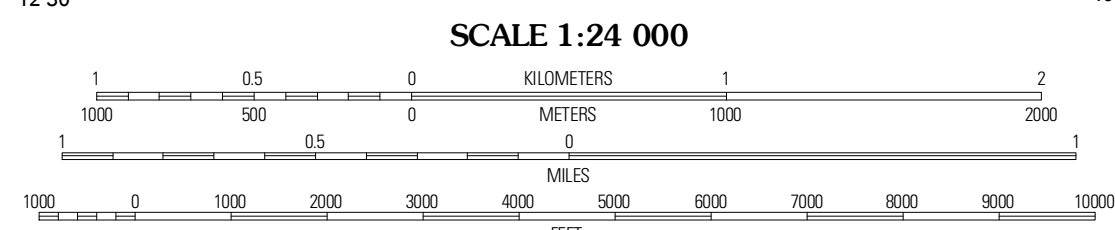
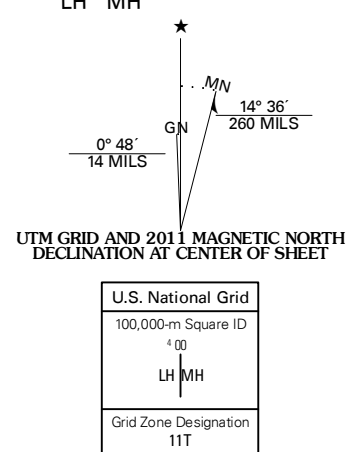


JOHNNY CREEK SW QUADRANGLE  
OREGON  
7.5-MINUTE SERIES



Produced by the United States Geological Survey  
North American Datum of 1983 (NAD83)  
World Geodetic System of 1984 (WGS84). Projection and  
1 000-meter grid: Universal Transverse Mercator, Zone 11T  
10 000-foot ticks: Oregon Coordinate System of 1983 (south  
zone)

Imagery.....NAIP, July 2009  
Roads.....©2006-2010 Tele Atlas  
Names.....GNIS, 2010  
Hydrography.....National Hydrography Dataset, 2009  
Contours.....National Elevation Dataset, 2000  
Boundaries.....Census, IBWC, IBC, USGS, 1972 - 2010



|                |                   |                     |
|----------------|-------------------|---------------------|
| Jamber Lake    | Regrass Butte     | Johnny Creek Spring |
| Coffin Butte   | Johnny Creek SW   | Gran Canyon         |
| Mickey Springs | Ancient Lake Well | Grassy Ridge Well   |

ADJOINING 7.5' QUADRANGLES

CONTOUR INTERVAL 20 FEET  
NORTH AMERICAN VERTICAL DATUM OF 1988

This map was produced to conform with version 0.5.10  
of the USGS US Topo Product Standard.  
A metadata file associated with this product is draft version 0.5.16

JOHNNY CREEK SW, OR  
2011