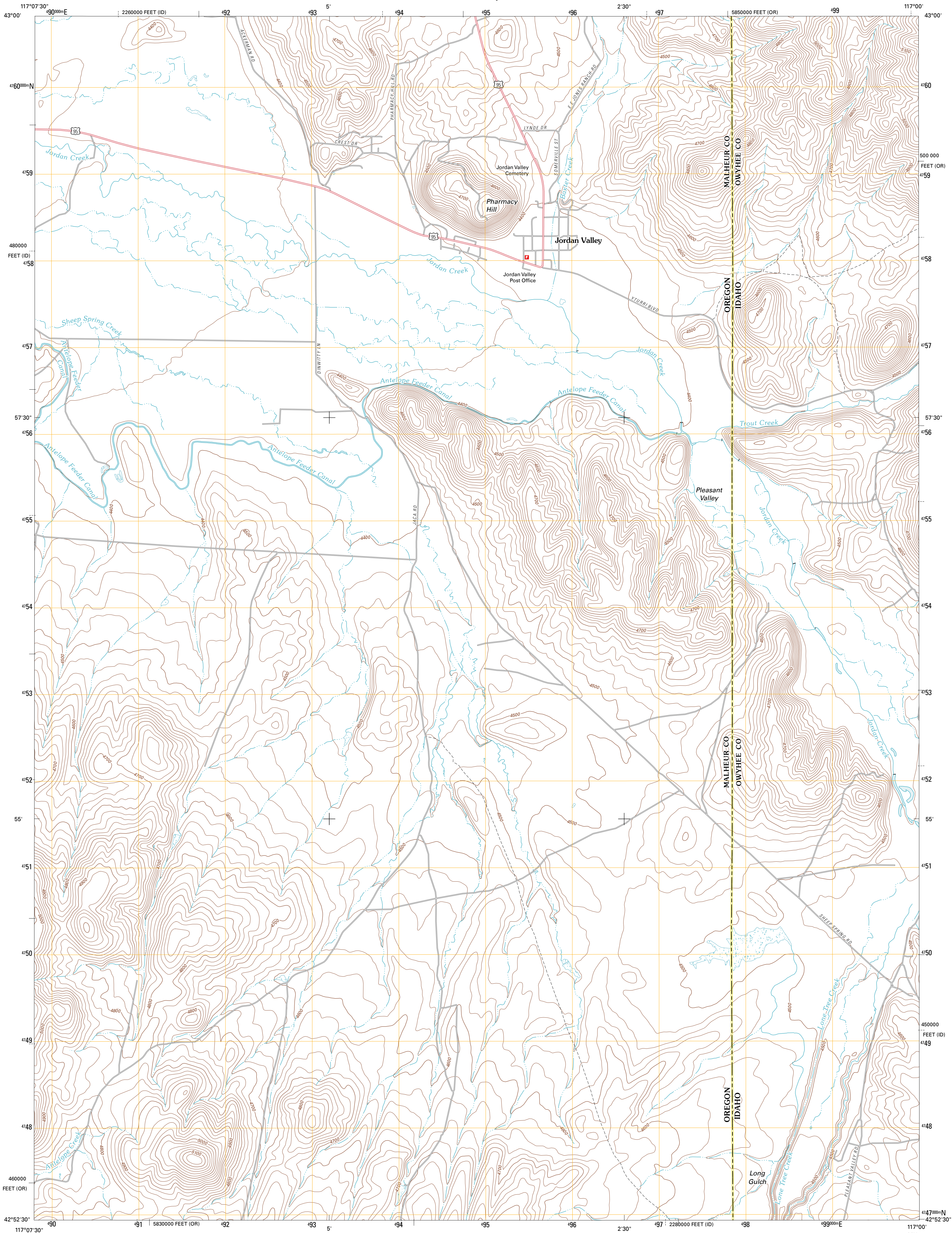




U.S. DEPARTMENT OF THE INTERIOR
U. S. GEOLOGICAL SURVEY

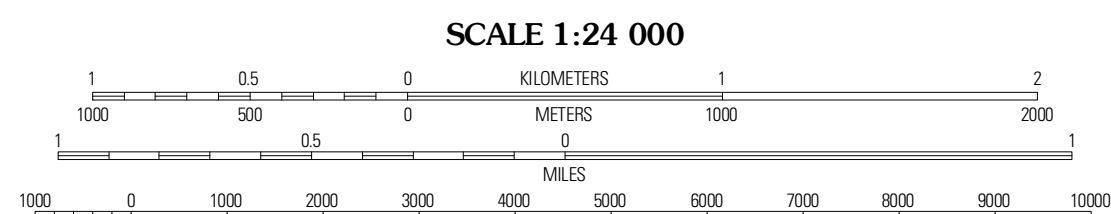
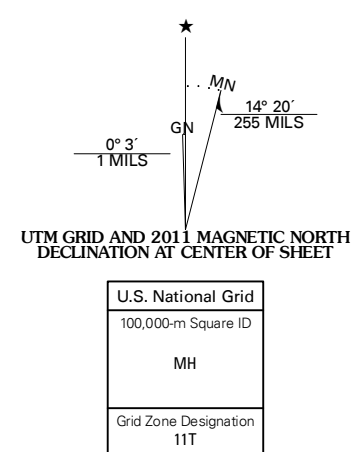


JORDAN VALLEY QUADRANGLE
OREGON-IDAHO
7.5-MINUTE SERIES

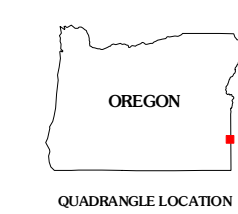


Produced by the United States Geological Survey
North American Datum of 1983 (NAD83)
World Geodetic System of 1984 (WGS84). Projection and
1 000-meter grid: Universal Transverse Mercator, Zone 11T
10 000-foot ticks: Oregon Coordinate System of 1983 (south
zone), Idaho Coordinate System of 1983 (west zone)

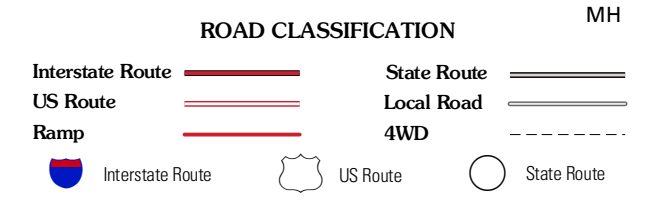
Imagery: NAIP, July 2009
Roads: ©2006-2010 Tele Atlas
Names: GNS, 2010
Hydrography: National Hydrography Dataset, 2009
Contours: National Elevation Dataset, 2000
Boundaries: Census, IBWC, IBC, USGS, 1972 - 2010



CONTOUR INTERVAL 20 FEET
NORTH AMERICAN VERTICAL DATUM OF 1988
This map was produced to conform with version 0.5.10
of the USGS US Topo Product Standard.
A metadata file associated with this product is draft version 0.5.16



Dowsey Canyon	Hooker Creek	Saicher Mountain
Antelope Reservoir	Jordan Valley	Stonehouse Creek
Juniper Ridge	Parsnip Peak	Williams Creek



JORDAN VALLEY, OR-ID
2011

ADJOINING 7.5' QUADRANGLES