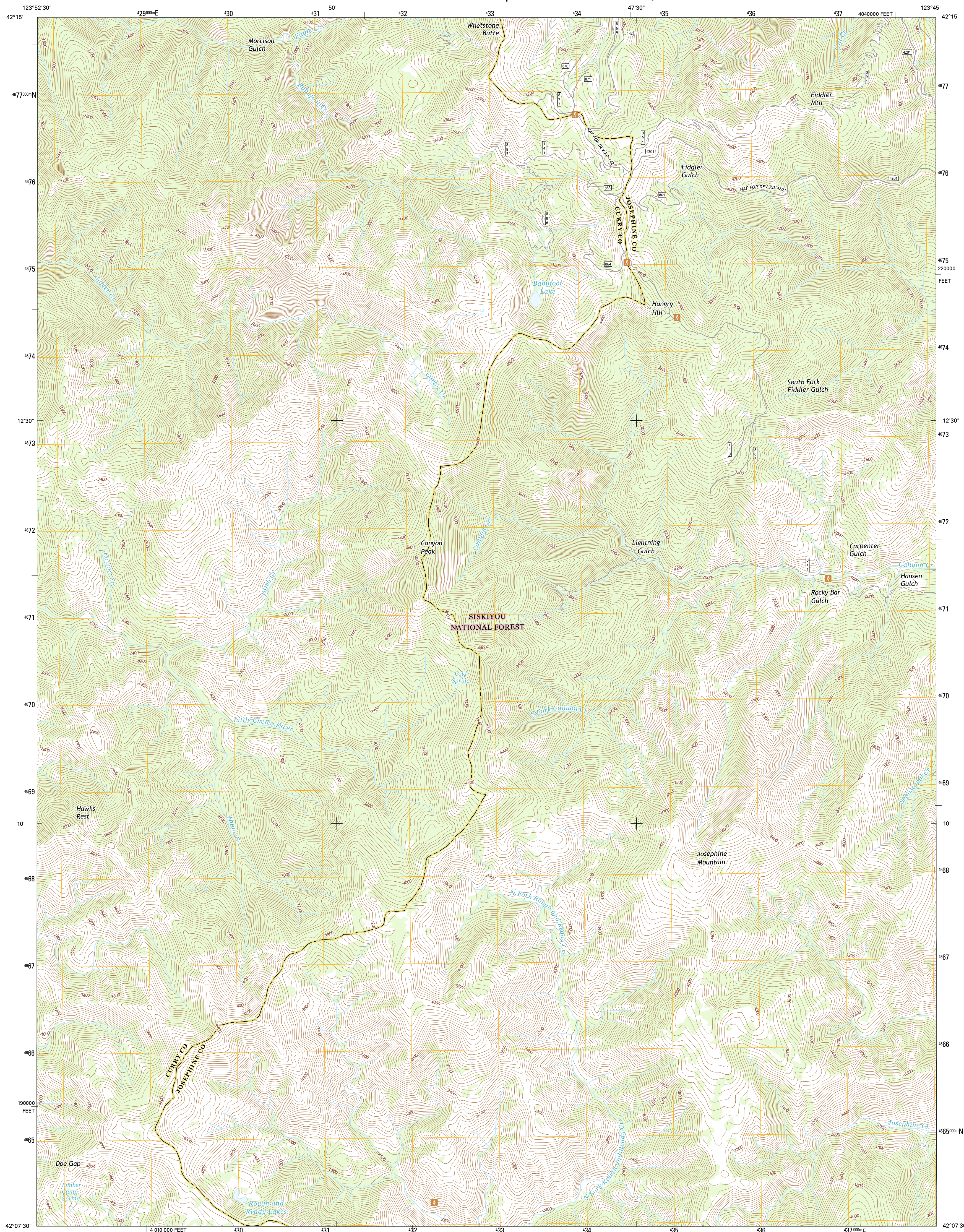




U.S. DEPARTMENT OF THE INTERIOR
U.S. GEOLOGICAL SURVEY



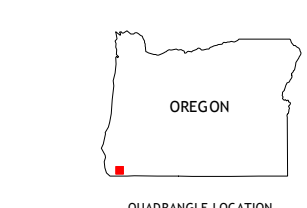
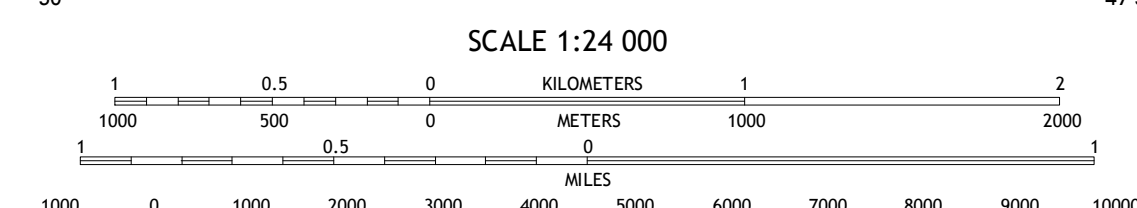
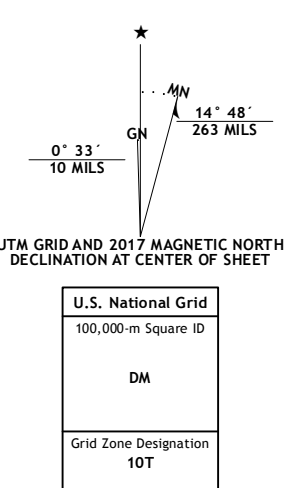
JOSEPHINE MOUNTAIN QUADRANGLE
OREGON
7.5-MINUTE SERIES



Produced by the United States Geological Survey
North American Datum of 1983 (NAD83)
World Geodetic System of 1984 (WGS84), Projection and
1 000-meter grid; Universal Transverse Mercator, Zone 10T
10 000-foot ticks; Oregon Coordinate System of 1983 (south zone)

This map is not a legal document. Boundaries may be generalized for this map scale. Private lands within government reservations may not be shown. Obtain permission before entering private lands.

Imagery: NAIIP, October 2014
Roads: U.S. Census Bureau, 2015 - 2016
Roads within US Forest Service Lands: FSTopo Data with limited Forest Service updates, 2012 - 2016
Names: National Hydrography Dataset, 2014
Hydrography: National Hydrography Dataset, 2014
Contours: National Elevation Dataset, 2000
Boundaries: Multiple sources; see metadata file 1972 - 2016
Public Land Survey System: BLM, 2016
Wetlands: FWS National Wetlands Inventory 1977 - 2014



ROAD CLASSIFICATION

Expressway	Local Connector
Secondary Hwy	Local Road
Ramp	4WD
Interstate Route	US Route
FS Primary Route	FS Passenger Route
	FS High Clearance Route

State Route

Check with local Forest Service unit for current travel conditions and restrictions.

ADJOINING QUADRANGLES

1	2	3
4	5	6
7	8	9

1 Tincup Peak
2 Pearsall Peak
3 Eight Dollar Mountain
4 Checco Peak
5 Cave Junction
6 Biscuit Hill
7 Buckskin Peak
8 O'Brien

JOSEPHINE MOUNTAIN, OR
2017

