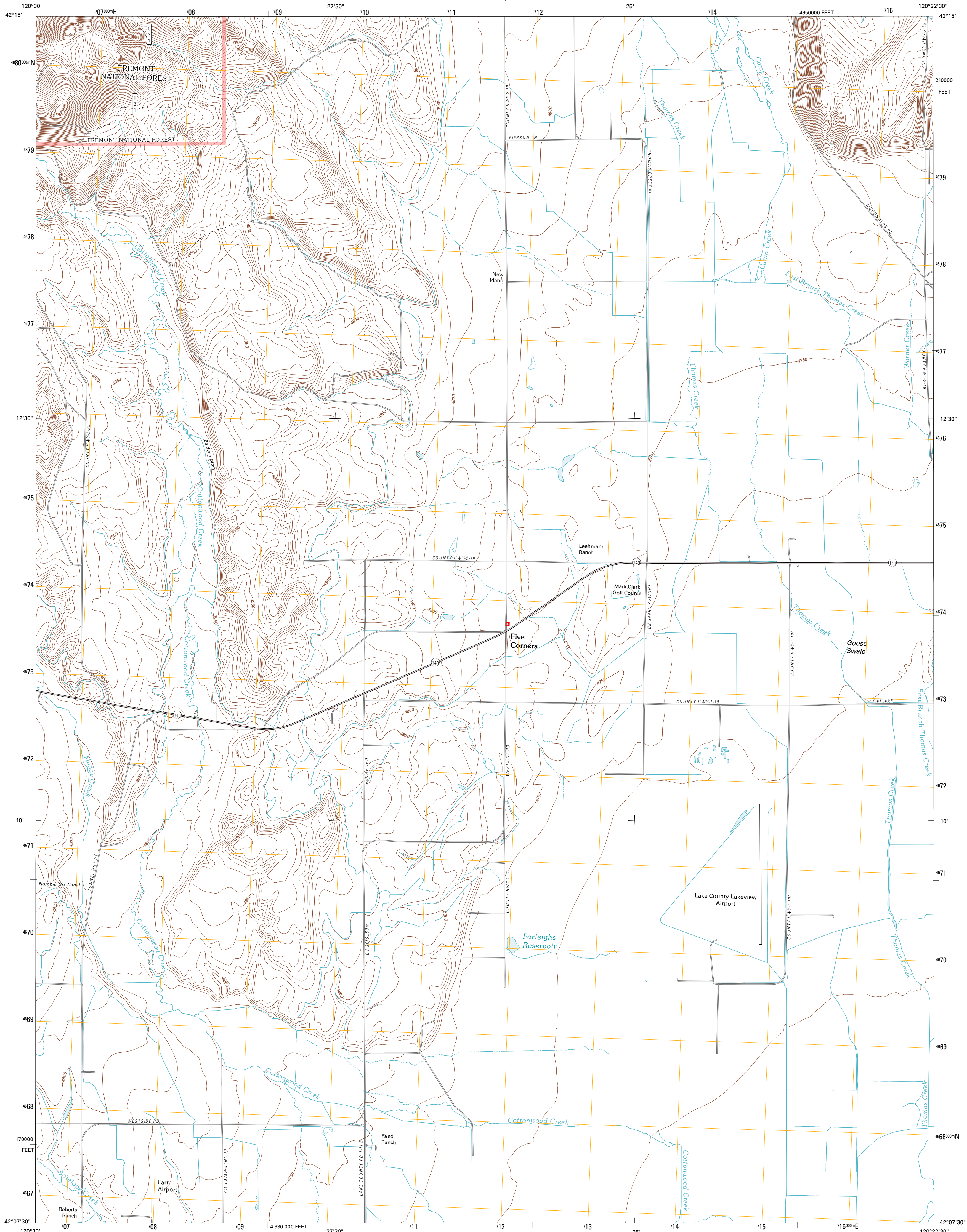




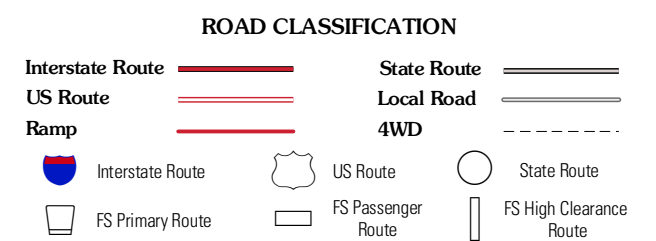
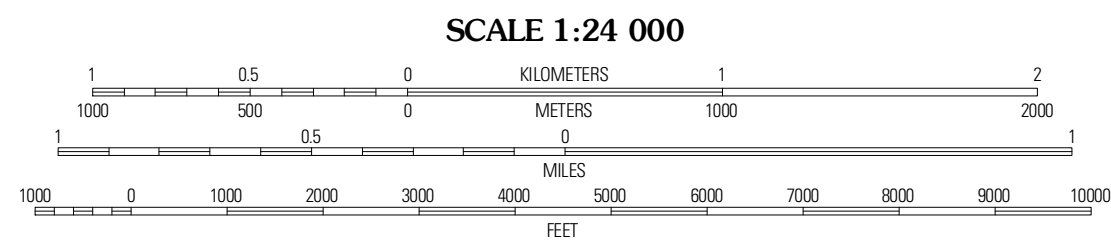
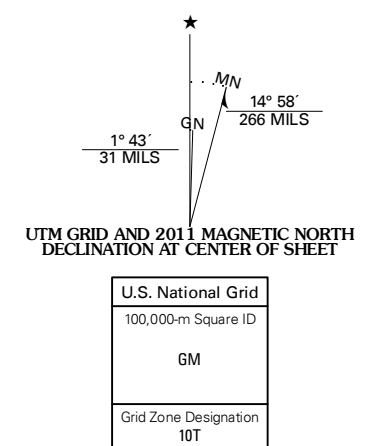
U.S. DEPARTMENT OF THE INTERIOR  
U. S. GEOLOGICAL SURVEY



LAKEVIEW AIRPORT QUADRANGLE  
OREGON-LAKE CO.  
7.5-MINUTE SERIES



Produced by the United States Geological Survey  
North American Datum of 1983 (NAD83)  
World Geodetic System of 1984 (WGS84). Projection and  
1 000-meter grid: Universal Transverse Mercator, Zone 10T  
10 000-foot ticks: Oregon Coordinate System of 1983 (south zone)



Imagery: NAIP, July 2009 - August 2009  
Roads: 2006-2010 Teler Atlas  
Roads within US Forest Service Lands: FSTopo Data with limited Forest Service updates, 2009  
Names: GNIS, 2010  
Hydrography: National Hydrography Dataset, 2009  
Contours: National Elevation Dataset, 1999  
Boundaries: Census, IBWC, IBC, USGS, 1972 - 2010

CONTOUR INTERVAL 10 FEET  
NORTH AMERICAN VERTICAL DATUM OF 1988

This map was produced to conform with version 0.5.10 of the USGS US Topo Product Standard.  
A metadata file associated with this product is draft version 0.5.16

Cox Flat	Big Baldy	Crooked Creek Valley
Dress Gap	Lakeview Airport	Lakeview
Fitzwater Point	West Side	Crane Creek

ADJOINING 7.5 QUADRANGLES

LAKEVIEW AIRPORT, OR  
2011