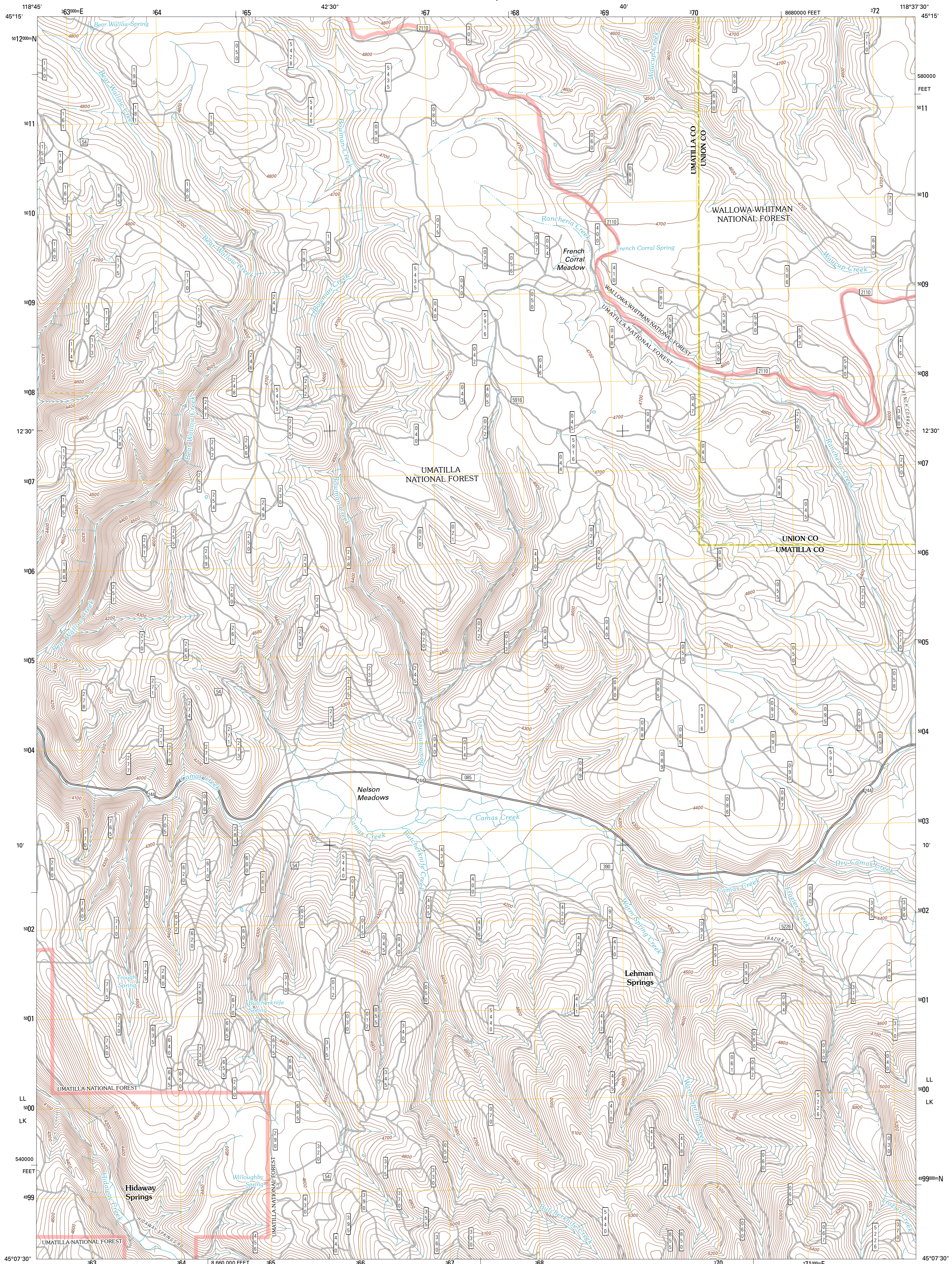




U.S. DEPARTMENT OF THE INTERIOR  
U. S. GEOLOGICAL SURVEY

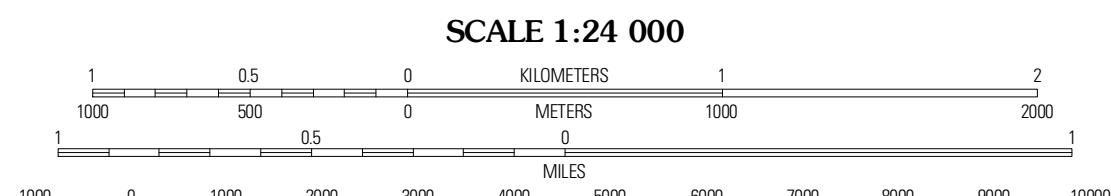
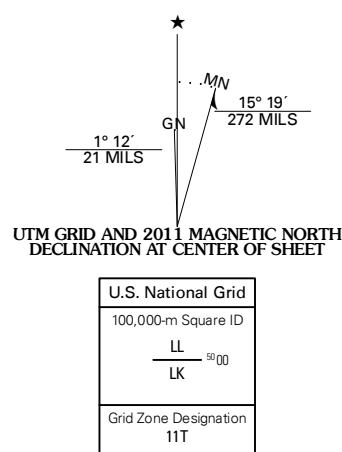


LEHMAN SPRINGS QUADRANGLE  
OREGON  
7.5-MINUTE SERIES



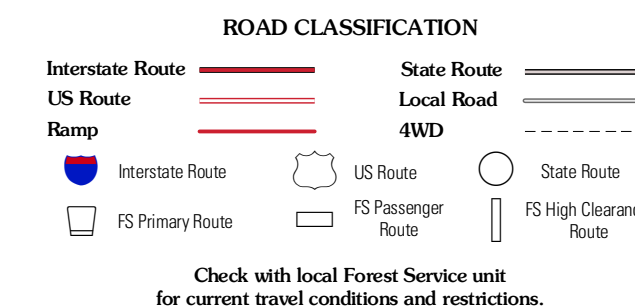
Produced by the United States Geological Survey  
North American Datum of 1983 (NAD83)  
World Geodetic System of 1984 (WGS84). Projection and  
1 000-meter grid: Universal Transverse Mercator, Zone 11T  
10 000-foot ticks: Oregon Coordinate System of 1983 (north  
zone)

Imagery.....NAIP, July 2009 - August 2009  
Roads.....©2006-2010 Tele Atlas  
Roads within US Forest Service Lands.....FSTopo Data  
with limited Forest Service updates, 2009  
Names.....GNIS, 2010  
Hydrography.....National Hydrography Dataset, 2009  
Contours.....National Elevation Dataset, 1999  
Boundaries.....Census, IBWC, IBC, USGS, 1972 - 2010



|                 |                |                |
|-----------------|----------------|----------------|
| Granite Meadows | Tamarack Gulch | Bully Mountain |
| Owens Butte     | Lehman Springs | Sullivan Gulch |
| Ukiah SE        | Pearson Ridge  | Tower Mountain |

ADJOINING 7.5' QUADRANGLES



LEHMAN SPRINGS, OR  
2011