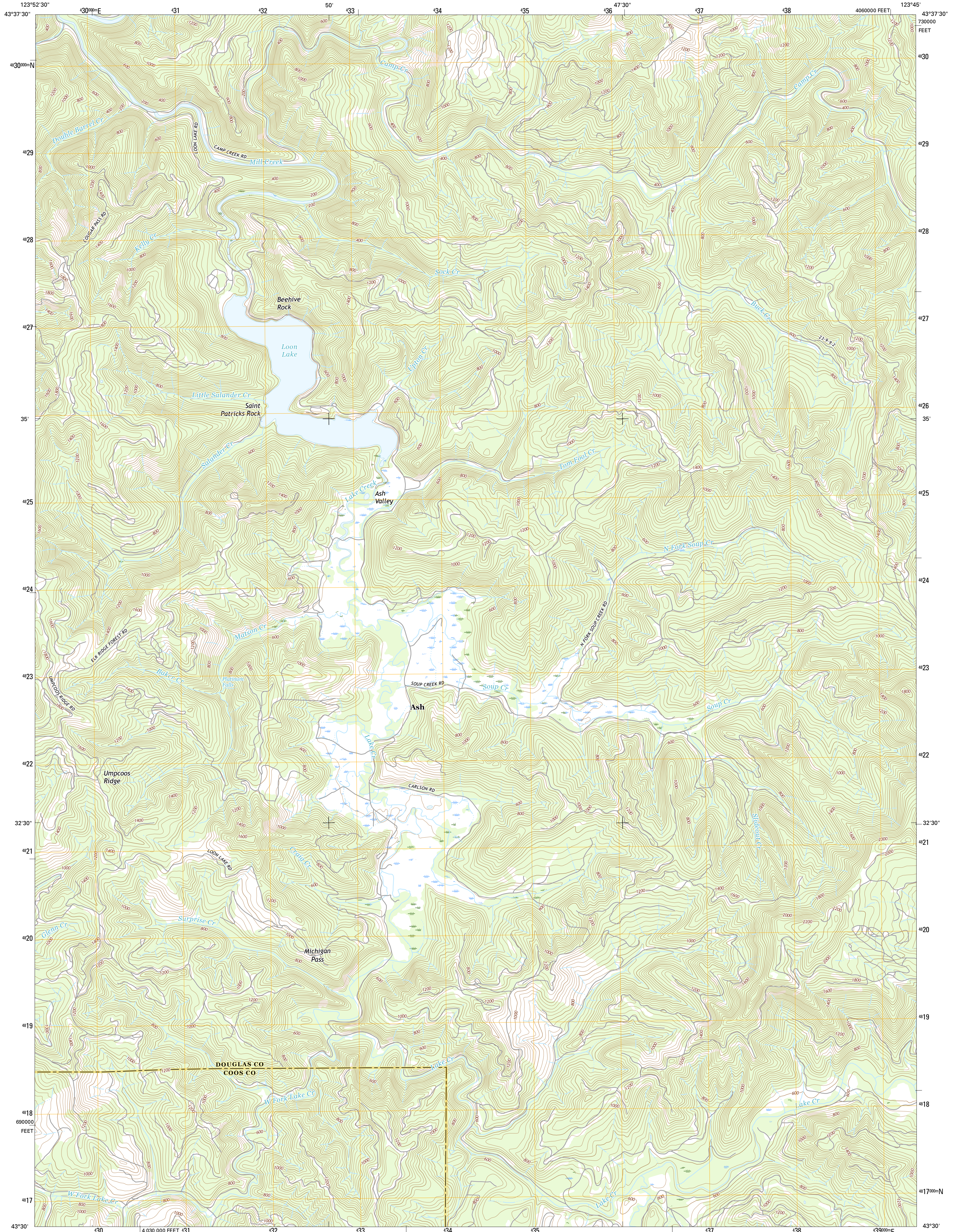




U.S. DEPARTMENT OF THE INTERIOR  
U.S. GEOLOGICAL SURVEY



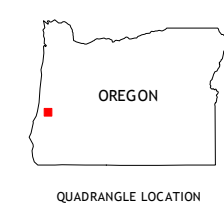
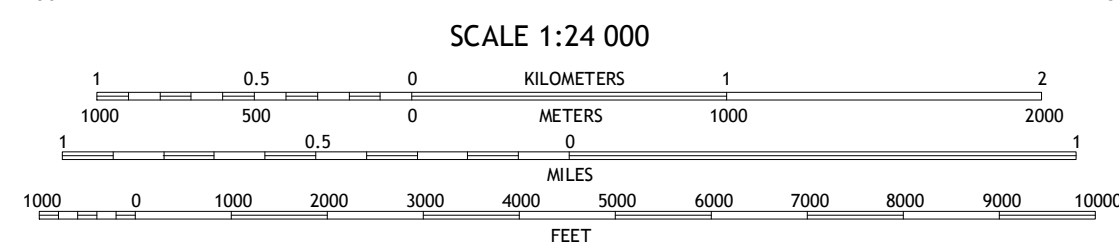
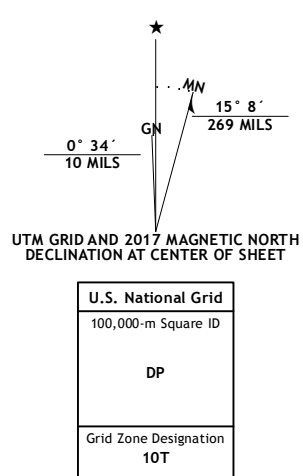
LOON LAKE QUADRANGLE  
OREGON  
7.5-MINUTE SERIES



**Produced by the United States Geological Survey**  
North American Datum of 1983 (NAD83)  
World Geodetic System of 1984 (WGS84). Projection and  
1 000-meter grid: Universal Transverse Mercator, Zone 10T  
10 000-foot ticks: Oregon Coordinate System of 1983 (south  
zone)

This map is not a legal document. Boundaries may be  
generalized for this map scale. Private lands within government  
reservations may not be shown. Obtain permission before  
entering private lands.

Imagery.....N.A.I.P. October 2014  
Roads.....U.S. Census Bureau, 2015 - 2016  
Names.....GNIS, 2016  
Hydrography.....National Hydrography Dataset, 2014  
Contours.....National Elevation Dataset, 1999  
Boundaries.....Multiple sources; see metadata file 1972 - 2016  
Public Land Survey System.....BLM, 2016  
Wetlands.....FWS National Wetlands Inventory 1977 - 2014



**ROAD CLASSIFICATION**

Expressway  
Secondary Hwy  
Ramp

Local Connector  
Local Road  
4WD

Interstate Route  
US Route  
State Route

1	2	3
4	5	6
7	8	9

ADJOINING QUADRANGLES

1 Deer Head Point  
2 Scottsburg  
3 Devils Graveyard  
4 Elk Peak  
5 Old Blue  
6 Golden Falls  
7 Wers Peak  
8 Kelly Butte

LOON LAKE, OR  
2017

