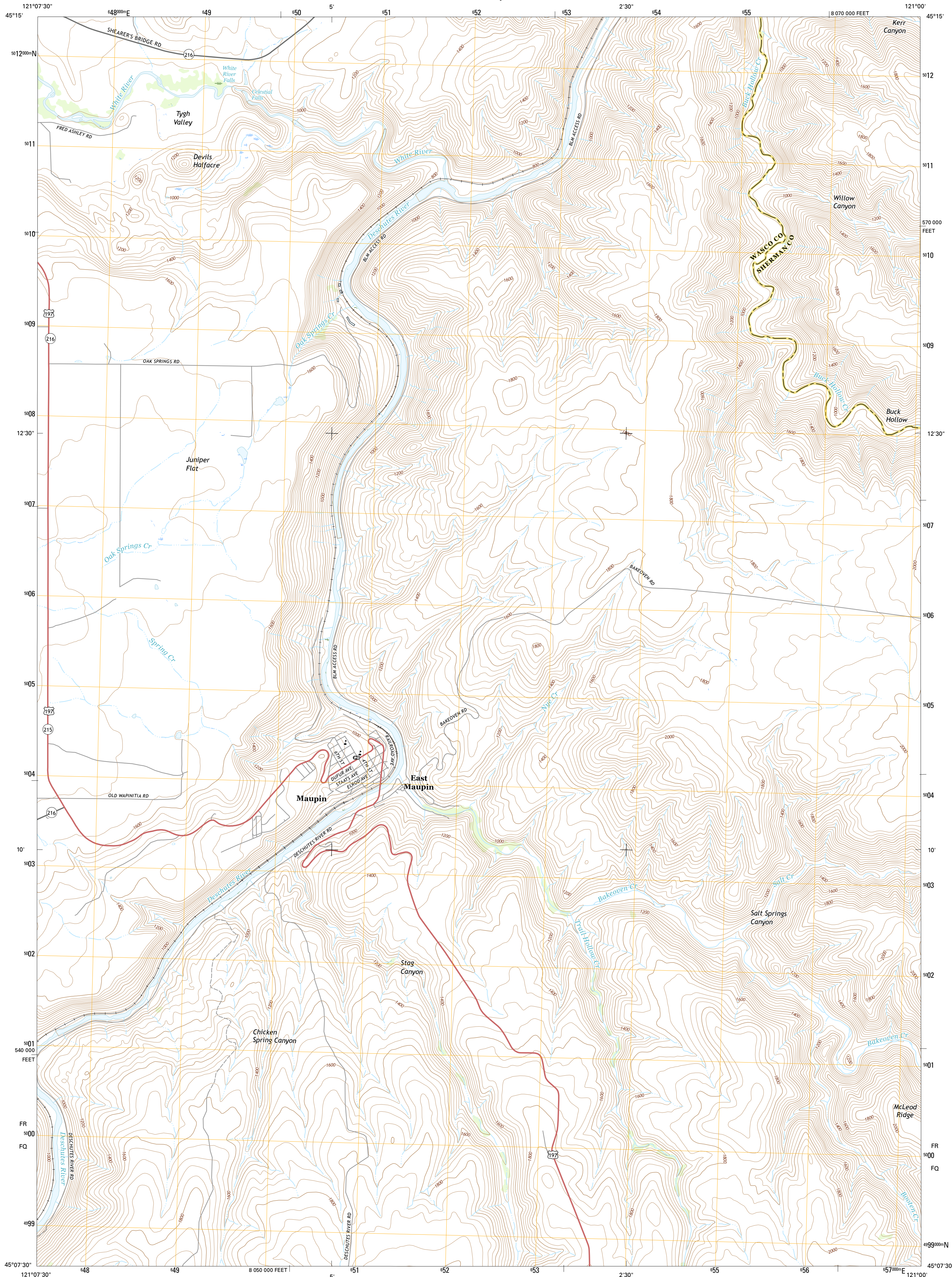




U.S. DEPARTMENT OF THE INTERIOR
U.S. GEOLOGICAL SURVEY



MAUPIN QUADRANGLE
OREGON
7.5-MINUTE SERIES

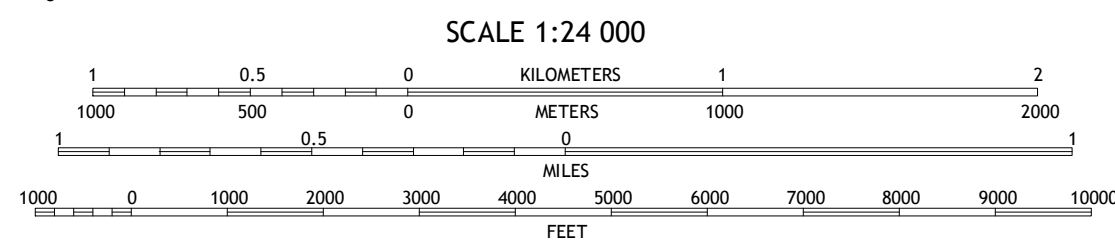
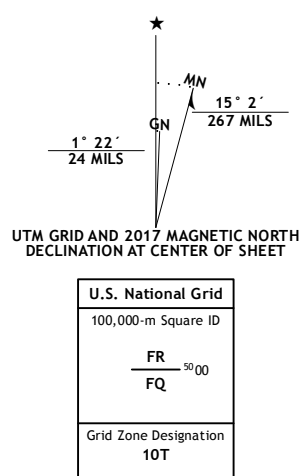


Produced by the United States Geological Survey

North American Datum of 1983 (NAD83)
World Geodetic System of 1984 (WGS84). Projection and
1 000-meter grid: Universal Transverse Mercator, Zone 10T
10 000-foot ticks: Oregon Coordinate System of 1983 (north
zone)

This map is not a legal document. Boundaries may be
generalized for this map scale. Private lands within government
reservations may not be shown. Obtain permission before
entering private lands.

Imagery.....NAIP, October 2014
Roads.....U.S. Census Bureau, 2015 - 2016
Names.....GHS, 2016
Hydrography.....National Hydrography Dataset, 2014
Contours.....National Elevation Dataset, 1999
Boundaries.....Multiple sources; see metadata file 1972 - 2016
Public Land Survey System.....BLM, 2016
Wetlands.....FWS National Wetlands Inventory 1977 - 2014



QUADRANGLE LOCATION

ROAD CLASSIFICATION

	Expressway		Local Connector
	Secondary Hwy		Local Road
	Ramp		4WD
	Interstate Route		US Route
			State Route

1	2	3	1 Postage Stamp Butte
4	5	6	2 Shears Bridge
7	8	9	3 Simamox
			4 Tigh Valley
			5 Dead Dog Canyon
			6 Maupin SW
			7 Dant
			8 Criterion

MAUPIN, OR
2017



NSN 7540-01-000-2707
USGS X 24 K 28 057
USGS REF NO. 24K28057