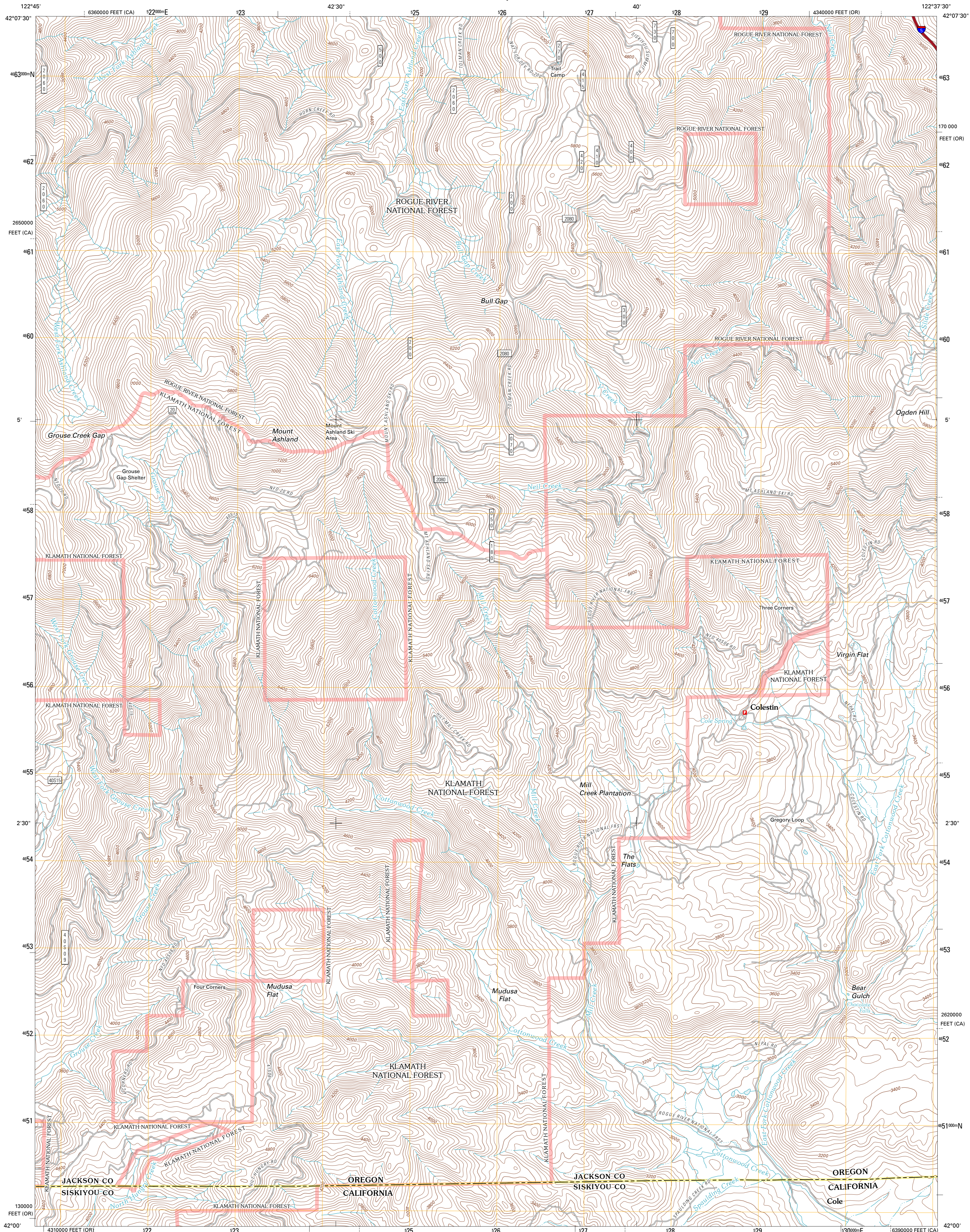




U.S. DEPARTMENT OF THE INTERIOR  
U. S. GEOLOGICAL SURVEY

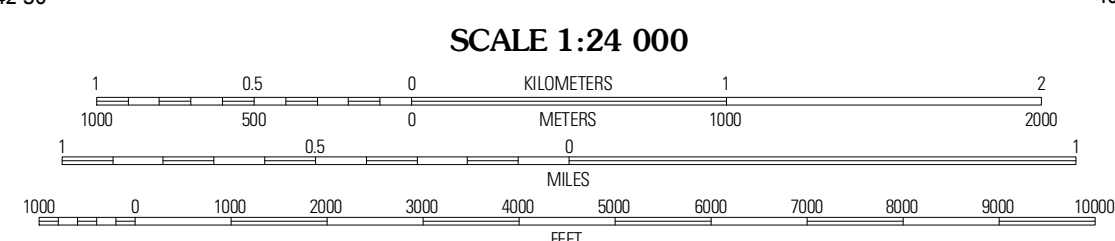
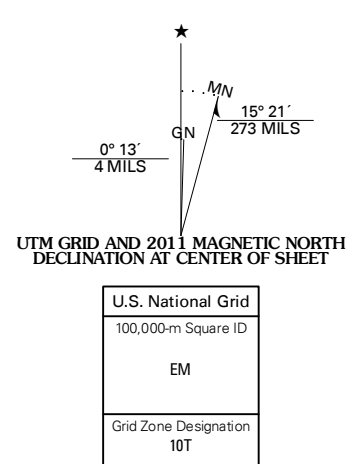


MOUNT ASHLAND QUADRANGLE  
OREGON-CALIFORNIA  
7.5-MINUTE SERIES

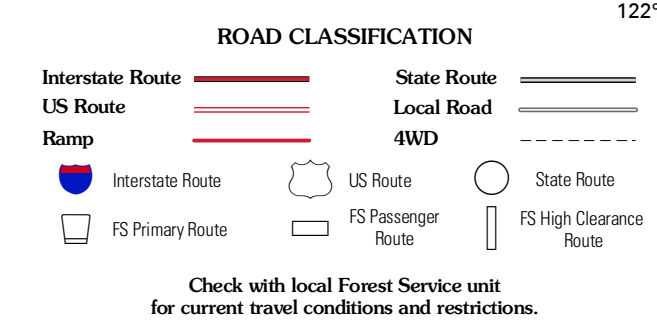
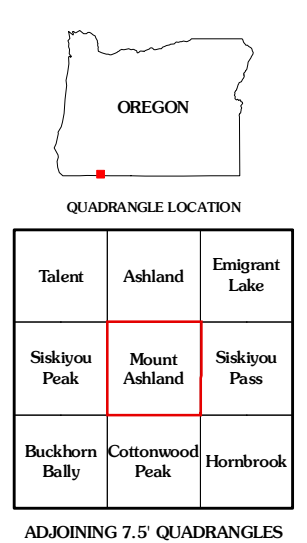


Produced by the United States Geological Survey  
North American Datum of 1983 (NAD83)  
World Geodetic System of 1984 (WGS84). Projection and  
1 000-meter grid. Universal Transverse Mercator. Zone 10T  
10 000-foot ticks: Oregon Coordinate System of 1983 (south  
zone), California Coordinate System of 1983 (1 zone)

Imagery:.....NAP, June 2009  
Roads:.....©2006-2010 Tele Atlas  
Roads within US Forest Service Lands:.....FSTopo Data  
with limited Forest Service updates, 2009  
Names:.....GNIS, 2010  
Hydrography:.....National Hydrography Dataset, 2009  
Contours:.....National Elevation Dataset, 1999  
Boundaries:.....Census, IBWC, IBC, USGS, 1972 - 2010



CONTOUR INTERVAL 40 FEET  
NORTH AMERICAN VERTICAL DATUM OF 1988  
This map was produced to conform with version 0.5.10  
of the USGS US Topo Product Standard.  
A metadata file associated with this product is draft version 0.5.16



MOUNT ASHLAND, OR-CA  
2011