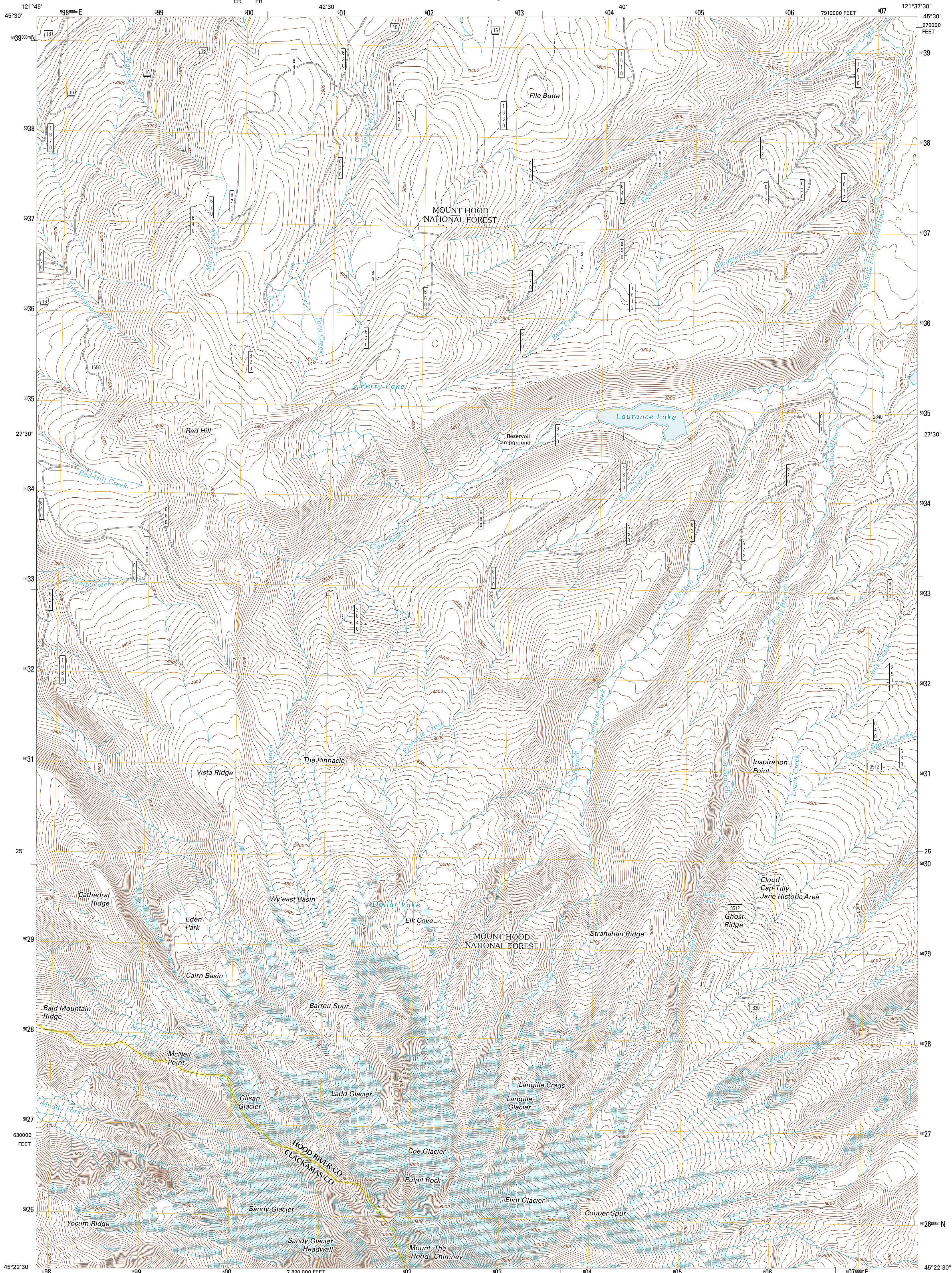




U.S. DEPARTMENT OF THE INTERIOR  
U. S. GEOLOGICAL SURVEY

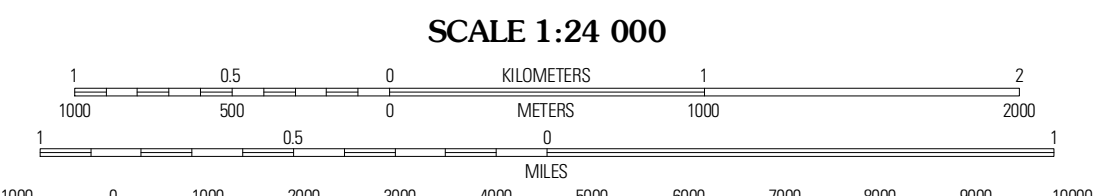
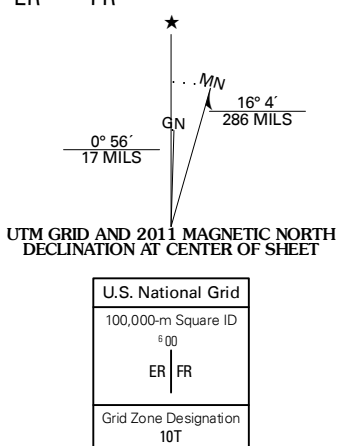


MOUNT HOOD NORTH QUADRANGLE  
OREGON  
7.5-MINUTE SERIES



Produced by the United States Geological Survey  
North American Datum of 1983 (NAD83)  
Roads..... 6/2006-2010 Tide Atlas  
World Geodetic System of 1984 (WGS84). Projection and  
1 000-meter grid: Universal Transverse Mercator, Zone 10T  
10 000-foot ticks: Oregon Coordinate System of 1983 (north zone)

Imagery.....NAIP, June 2009 - July 2009  
Roads..... 6/2006-2010 Tide Atlas  
Roads within US Forest Service Lands..... FSTopo Data  
with limited Forest Service updates, 2009  
Names..... GNS, 2010  
Hydrography..... National Hydrography Dataset, 2009  
Contours..... National Elevation Dataset, 1999  
Boundaries..... Census, IBWC, IBC, USGS, 1972 - 2010



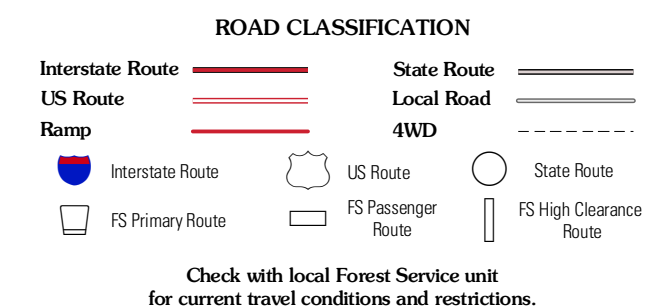
CONTOUR INTERVAL 40 FEET  
NORTH AMERICAN VERTICAL DATUM OF 1988  
This map was produced to conform with version 0.5.10  
of the USGS US Topo Product Standard.  
A metadata file associated with this product is draft version 0.5.16



QUADRANGLE LOCATION

Wahlam Lake	Dee	Parkdale
Ball Run Lake	Mount Hood North	Dog River
Government Camp	Mount Hood South	Budger Lake

ADJOINING 7.5 QUADRANGLES



Check with local Forest Service unit for current travel conditions and restrictions.

MOUNT HOOD NORTH, OR  
2011