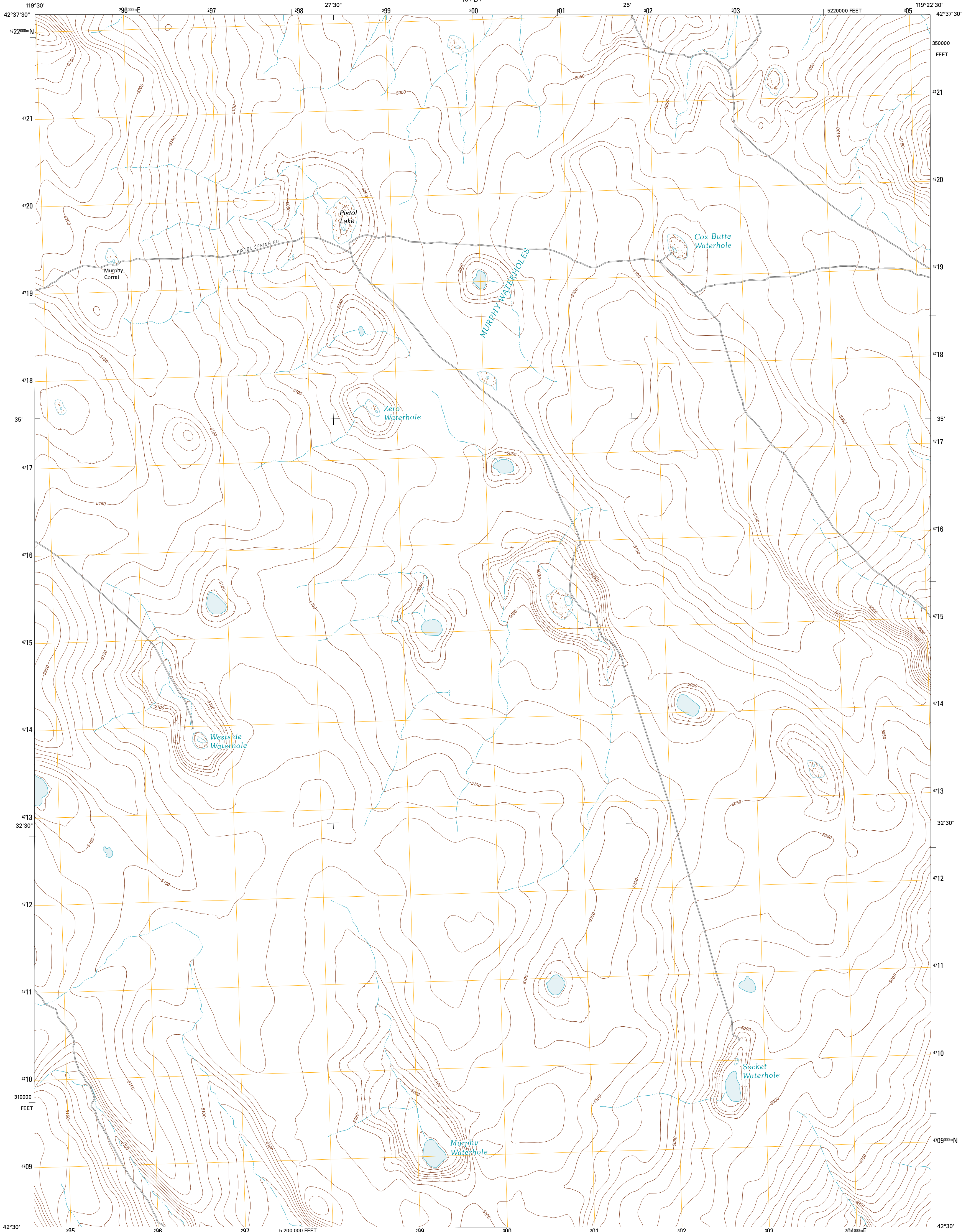




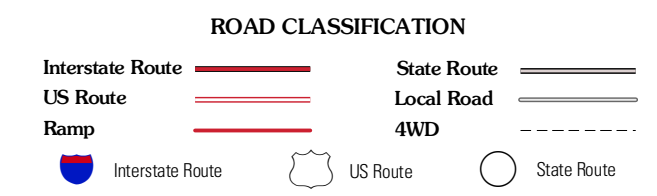
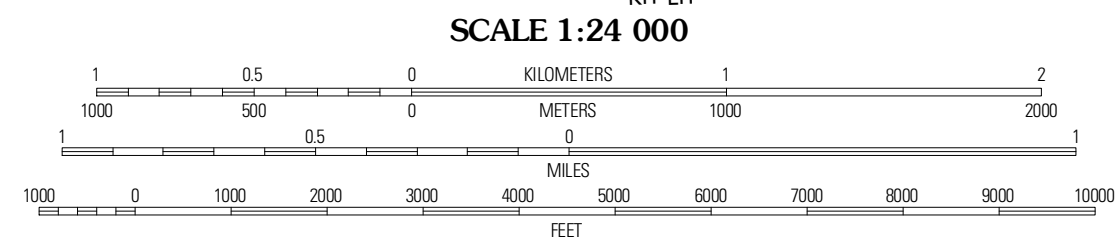
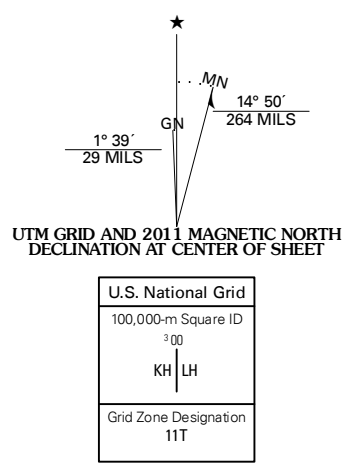
U.S. DEPARTMENT OF THE INTERIOR  
U. S. GEOLOGICAL SURVEY



MURPHY WATERHOLES QUADRANGLE  
OREGON-LAKE CO.  
7.5-MINUTE SERIES



Produced by the United States Geological Survey  
North American Datum of 1983 (NAD83)  
World Geodetic System of 1984 (WGS84). Projection and  
1 000-meter grid: Universal Transverse Mercator, Zone 11T  
10 000-foot ticks: Oregon Coordinate System of 1983 (south  
zone)



QUADRANGLE LOCATION

Blount Lake East	Steele Draw	Murphy Waterholes NE
Flook Lake	Murphy Waterholes	Ganno Reservoir
Sawde Knoll	Beetys Butte NW	Beetys Butte

Imagery.....©2009 NAIP, July 2009  
Roads.....©2006-2010 Tele Atlas  
Names.....©2010 GNS  
Hydrography.....National Hydrography Dataset, 2009  
Contours.....National Elevation Dataset, 2000  
Boundaries.....Census, IBWC, IBC, USGS, 1972 - 2010

SCALE 1:24 000  
CONTOUR INTERVAL 10 FEET  
NORTH AMERICAN VERTICAL DATUM OF 1988  
This map was produced to conform with version 0.5.10  
of the USGS US Topo Product Standard.  
A metadata file associated with this product is draft version 0.5.16

MURPHY WATERHOLES, OR  
2011

ADJOINING 7.5 QUADRANGLES