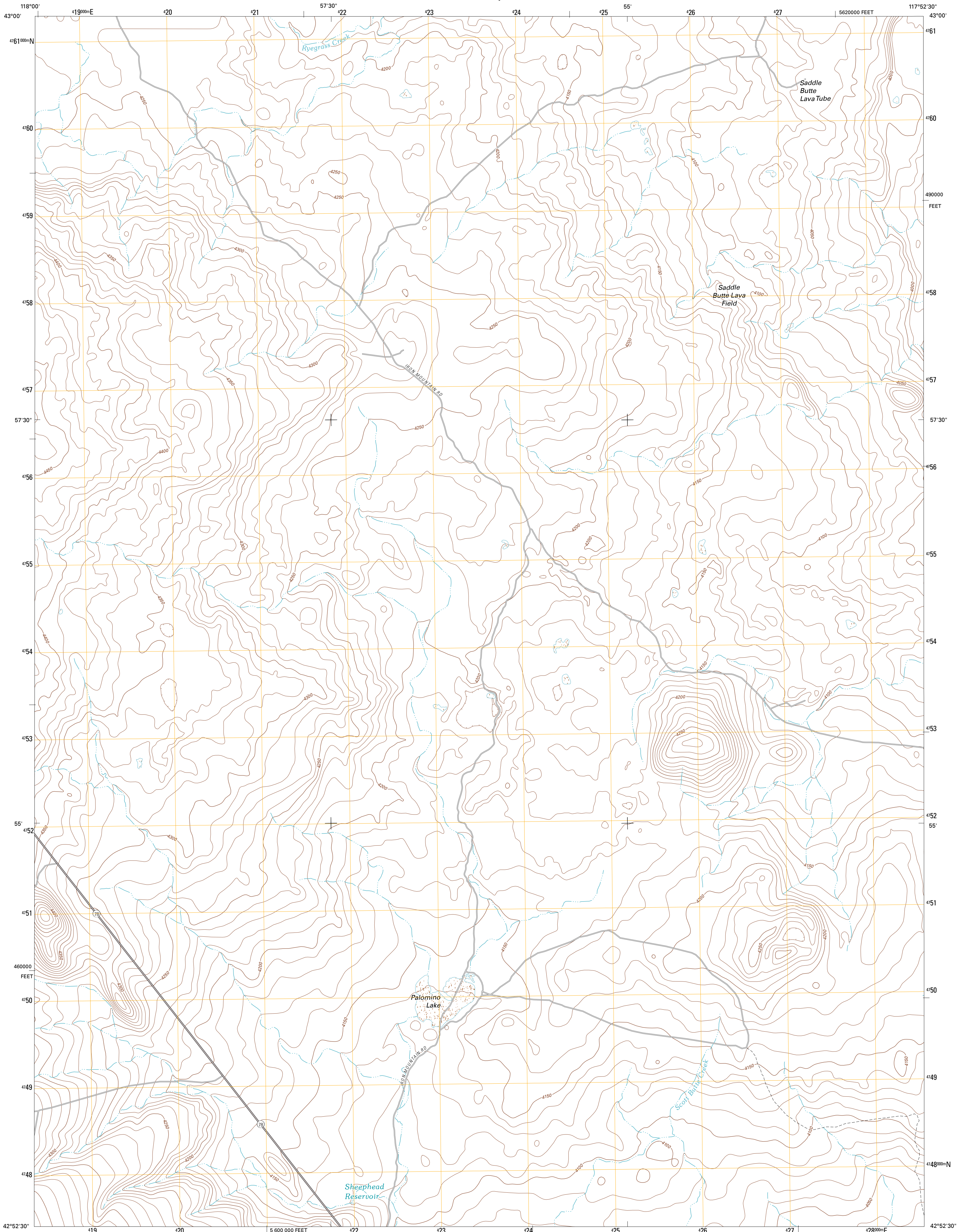




U.S. DEPARTMENT OF THE INTERIOR
U. S. GEOLOGICAL SURVEY

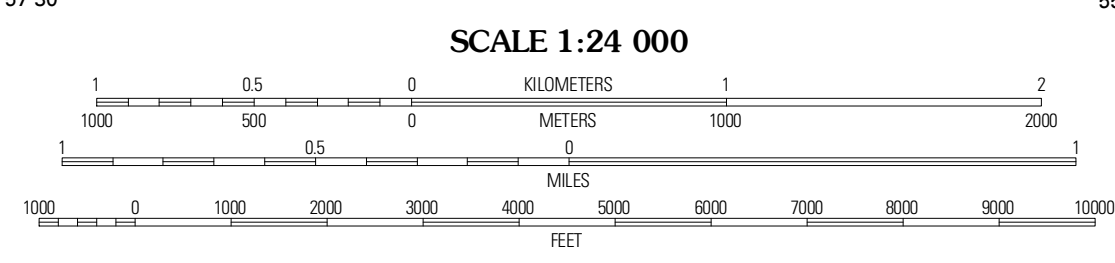
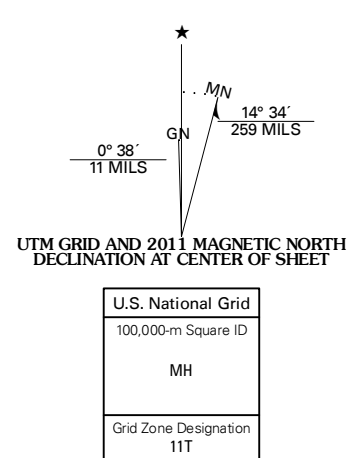


PALOMINO LAKE QUADRANGLE
OREGON-MALHEUR CO.
7.5-MINUTE SERIES



Produced by the United States Geological Survey
North American Datum of 1983 (NAD83)
World Geodetic System of 1984 (WGS84). Projection and
1 000-meter grid: Universal Transverse Mercator, Zone 11T
10 000-foot ticks: Oregon Coordinate System of 1983 (south
zone)

Imagery:.....NAIP, July 2009
Roads:.....©2006-2010 Tele Atlas
Names:.....GNIS, 2010
Hydrography:.....National Hydrography Dataset, 2009
Contours:.....National Elevation Dataset, 2000
Boundaries:.....Census, IBWC, IBC, USGS, 1972 - 2010

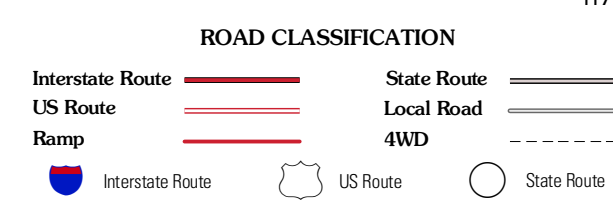


CONTOUR INTERVAL 10 FEET
NORTH AMERICAN VERTICAL DATUM OF 1988
This map was produced to conform with version 0.5.10
of the USGS US Topo Product Standard.
A metadata file associated with this product is draft version 0.5.16



ADJOINING 7.5' QUADRANGLES

Timball Peak	Saddle Butte	Wrangle Butte
Johany Creek Spring	Palomino Lake	Iron Mountain
Goan Canyon	Palomino Hills	Burrs Junction



PALOMINO LAKE, OR
2011