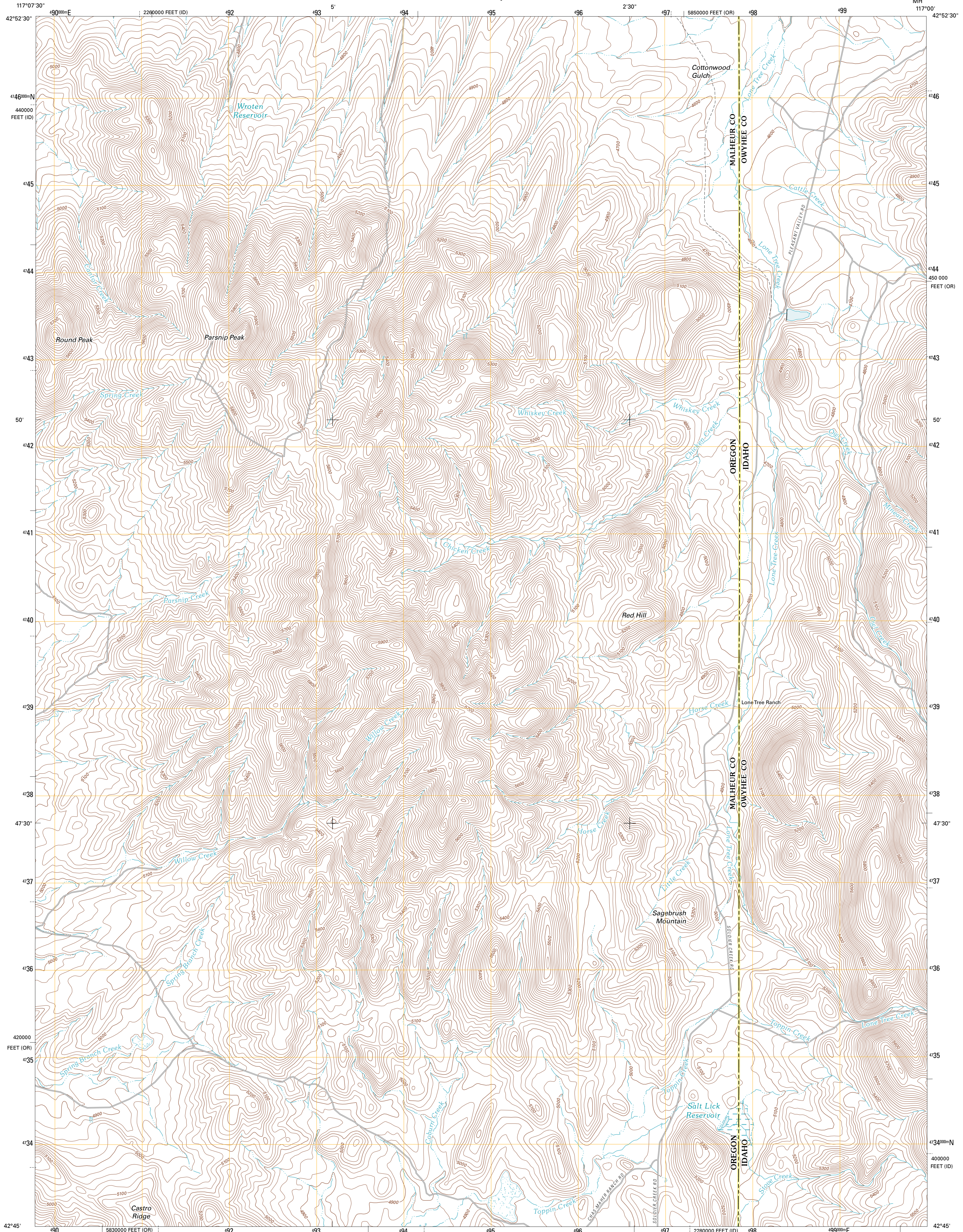




U.S. DEPARTMENT OF THE INTERIOR
U. S. GEOLOGICAL SURVEY

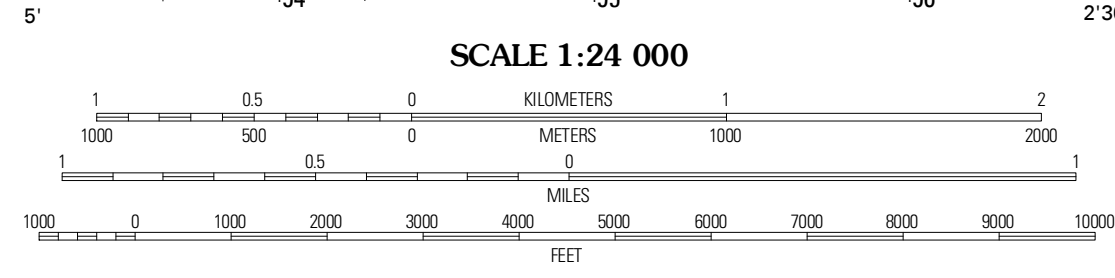
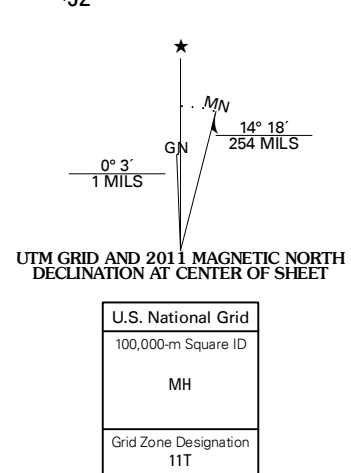


PARSNIP PEAK QUADRANGLE
OREGON-IDAHO
7.5-MINUTE SERIES



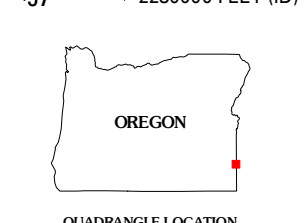
Produced by the United States Geological Survey
North American Datum of 1983 (NAD83)
World Geodetic System of 1984 (WGS84). Projection and
1 000-meter grid: Universal Transverse Mercator, Zone 11T
10 000-foot ticks: Oregon Coordinate System of 1983 (south
zone), Idaho Coordinate System of 1983 (west zone)

Imagery.....N.A.P., July 2009
Roads.....©2006-2010 Tele Atlas
Names.....©2006-2010 Tele Atlas
Hydrography.....National Hydrography Dataset, 2009
Contours.....National Elevation Dataset, 2001
Boundaries.....Census, IBWC, IBC, USGS, 1972 - 2010



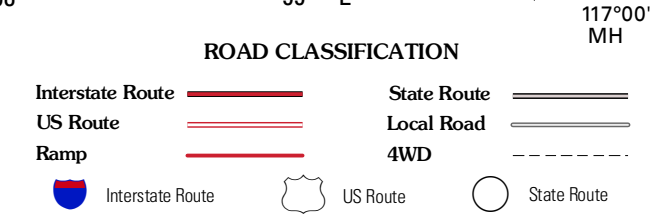
CONTOUR INTERVAL 20 FEET
NORTH AMERICAN VERTICAL DATUM OF 1988

This map was produced to conform with version 0.5.10
of the USGS US Topo Product Standard.
A metadata file associated with this product is draft version 0.5.16



Antelope Reservoir	Jordan Valley	Stonehouse Creek
Juniper Ridge	Parsnip Peak	Williams Creek
Whitehorse Butte	Juniper Point	Cliffs

ADJOINING 7.5' QUADRANGLES



PARSNIP PEAK, OR-ID
2011