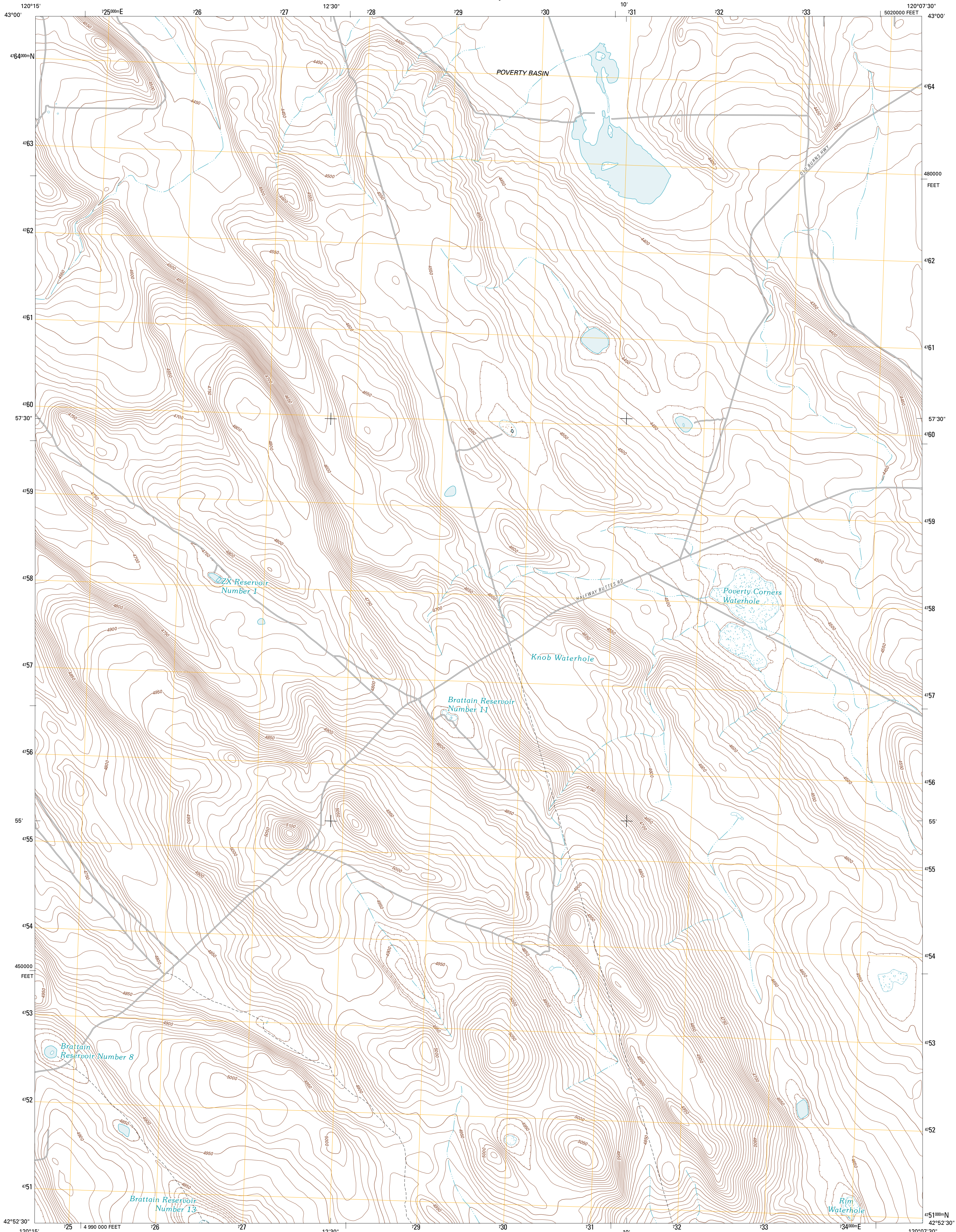




U.S. DEPARTMENT OF THE INTERIOR  
U. S. GEOLOGICAL SURVEY

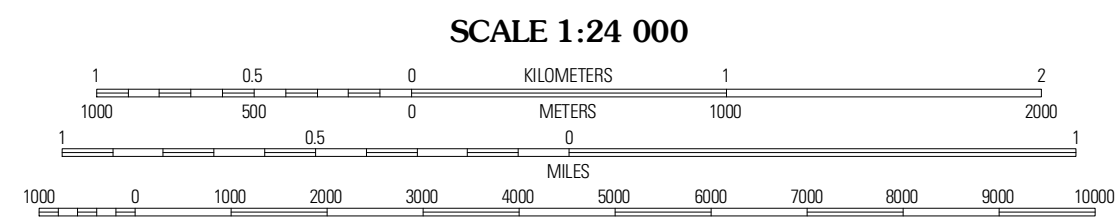
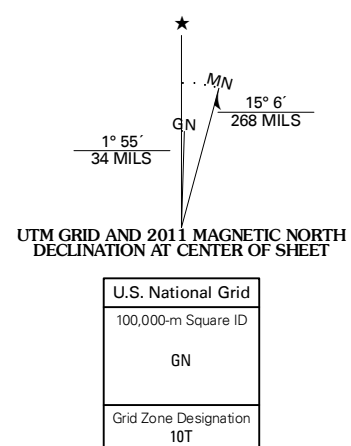


POVERTY BASIN SOUTH QUADRANGLE  
OREGON-LAKE CO.  
7.5-MINUTE SERIES



Produced by the United States Geological Survey  
North American Datum of 1983 (NAD83)  
World Geodetic System of 1984 (WGS84). Projection and  
1 000-meter grid: Universal Transverse Mercator, Zone 10T  
10 000-foot ticks: Oregon Coordinate System of 1983 (south  
zone)

Imagery.....N.A.P., July 2009  
Roads.....©2006-2010 Tele Atlas  
Names.....CNS, 2010  
Hydrography.....National Hydrography Dataset, 2009  
Contours.....National Elevation Dataset, 2000  
Boundaries.....Census, IBWC, IBC, USGS, 1972 - 2010

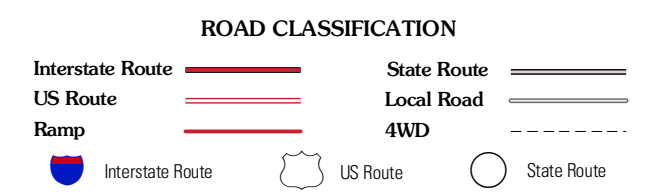


CONTOUR INTERVAL 10 FEET  
NORTH AMERICAN VERTICAL DATUM OF 1988  
This map was produced to conform with version 0.5.10  
of the USGS US Topo Product Standard.  
A metadata file associated with this product is draft version 0.5.16



ADJOINING 7.5' QUADRANGLES

Fire Lake	Poverty Basin North	Allali Buttes
Diatomite Reservoir	Poverty Basin South	Allali Lake
Biscuit Point	Sawed Horn	Coleman Hills



POVERTY BASIN SOUTH, OR  
2011