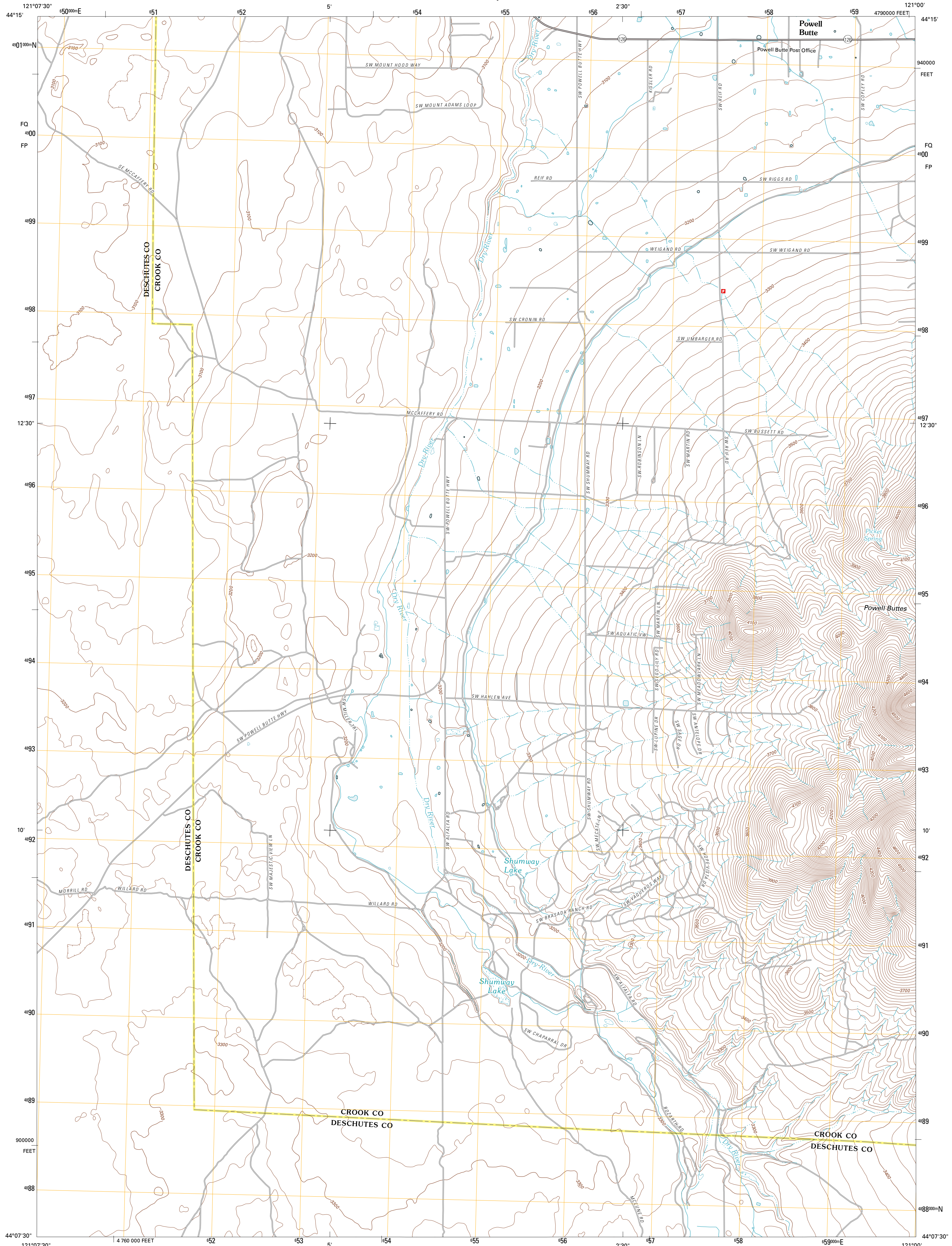




U.S. DEPARTMENT OF THE INTERIOR  
U. S. GEOLOGICAL SURVEY

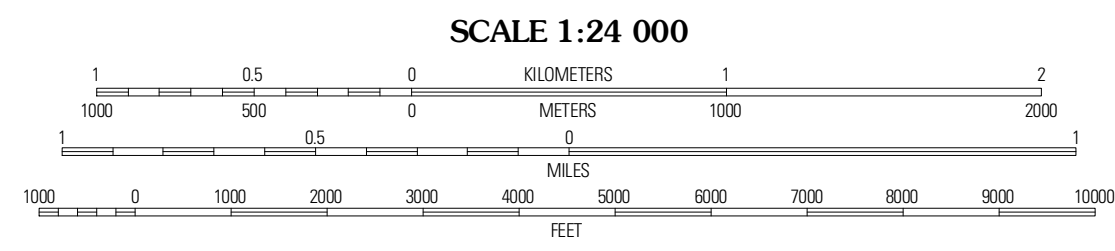
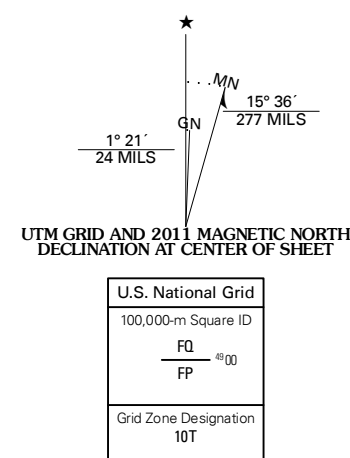


POWELL BUTTE QUADRANGLE  
OREGON  
7.5-MINUTE SERIES



Produced by the United States Geological Survey  
North American Datum of 1983 (NAD83)  
World Geodetic System of 1984 (WGS84). Projection and  
1 000-meter grid: Universal Transverse Mercator, Zone 10T  
10 000-foot ticks: Oregon Coordinate System of 1983 (south  
zone)

Imagery:.....N.A.I.P., June 2009  
Roads:.....©2006-2010 Tele Atlas  
Names:.....National Hydrography Dataset, 2010  
Hydrography:.....National Hydrography Dataset, 2009  
Contours:.....National Elevation Dataset, 2003  
Boundaries:.....Census, IBWC, IBC, USGS, 1972 - 2010



QUADRANGLE LOCATION

Redmond	O'Neil	Houston Lake
Forked Horn Butte	Powell Butte	Powell Buttes
Bend Airport	Alfalfa	Horse Butte

ADJOINING 7.5 QUADRANGLES

ROAD CLASSIFICATION

Interstate Route	State Route
US Route	Local Road
Ramp	4WD

Interstate Route US Route State Route

CONTOUR INTERVAL 20 FEET  
NORTH AMERICAN VERTICAL DATUM OF 1988

This map was produced to conform with version 0.5.10  
of the USGS US Topo Product Standard.  
A metadata file associated with this product is draft version 0.5.16

POWELL BUTTE, OR  
2011