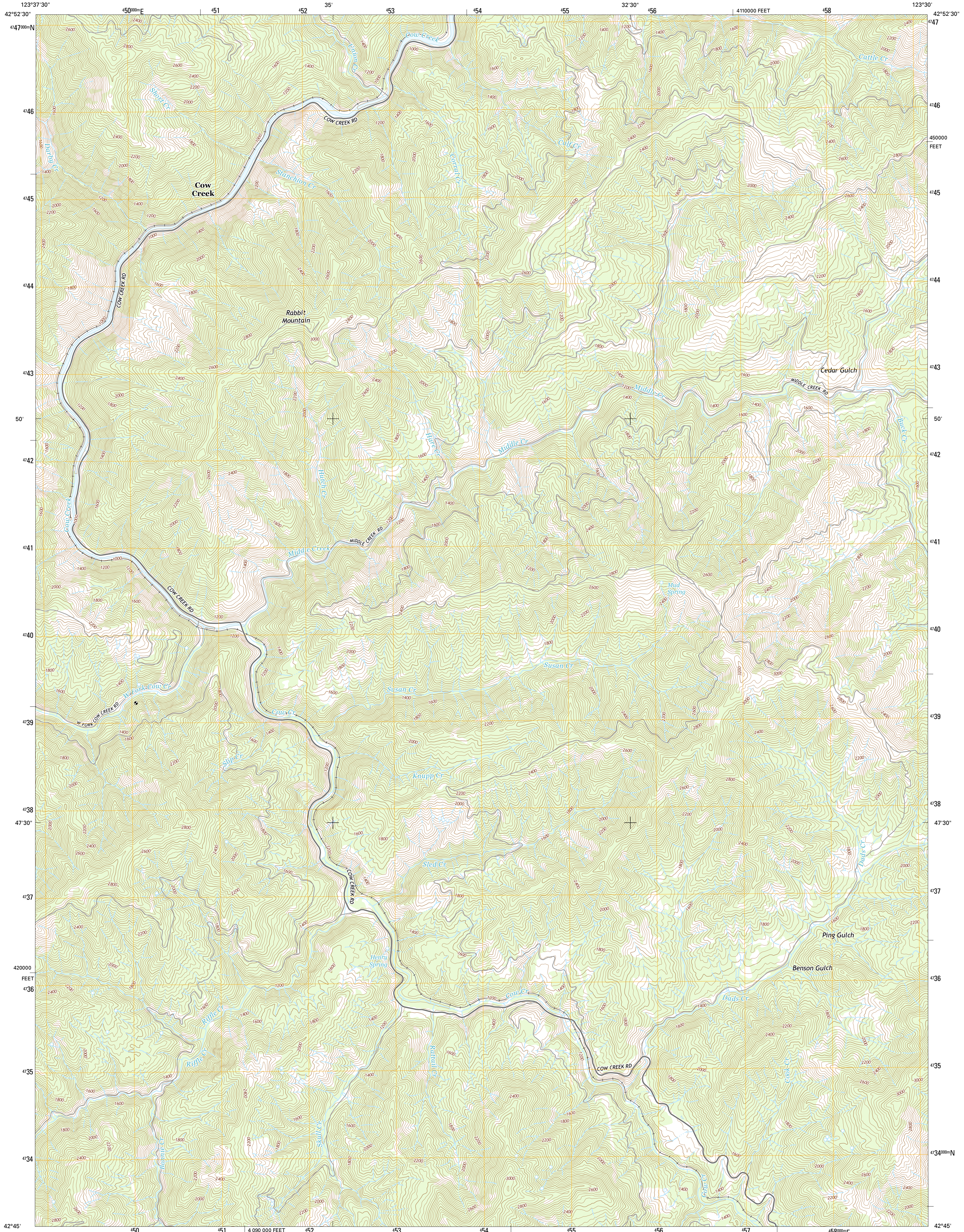




U.S. DEPARTMENT OF THE INTERIOR
U.S. GEOLOGICAL SURVEY



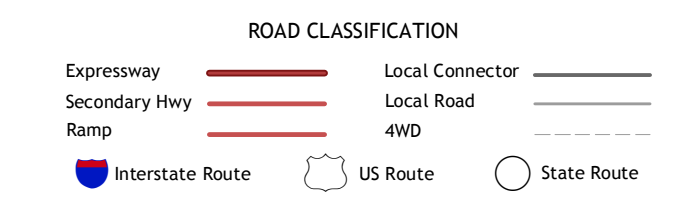
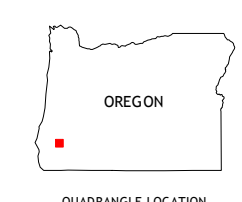
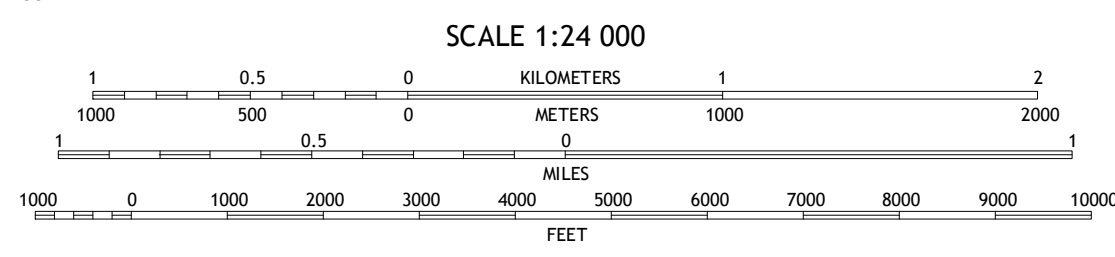
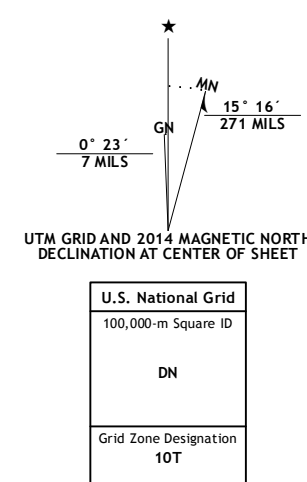
RABBIT MOUNTAIN QUADRANGLE
OREGON-DOUGLAS CO.
7.5-MINUTE SERIES



Produced by the United States Geological Survey
North American Datum of 1983 (NAD83)
World Geodetic System of 1984 (WGS84), Projection and
1 000-meter grid: Universal Transverse Mercator, Zone 10T
10 000-foot ticks: Oregon Coordinate System of 1983 (south
zone)

This map is not a legal document. Boundaries may be
generalized for this map scale. Private lands within government
reservations may not be shown. Obtain permission before
entering private lands.

Imagery.....NAIP, June 2012 - July 2012
Roads.....HERE, ©2013
Names.....GNIS, 2013
Hydrography.....National Hydrography Dataset, 2012
Contours.....National Elevation Dataset, 2013
Boundaries.....Multiple sources; see metadata file 1972 - 2013
Public Land Survey System.....BLM, 2011



1	2	3
4	5	
6	7	8

ADJOINING QUADRANGLES

1 Chipmunk Ridge
2 Live Oak Mountain
3 Nickel Mountain
4 Dutchman Butte
5 McCullough Creek
6 Bunker Creek
7 Mount Reuben
8 Glendale

RABBIT MOUNTAIN, OR
2014

