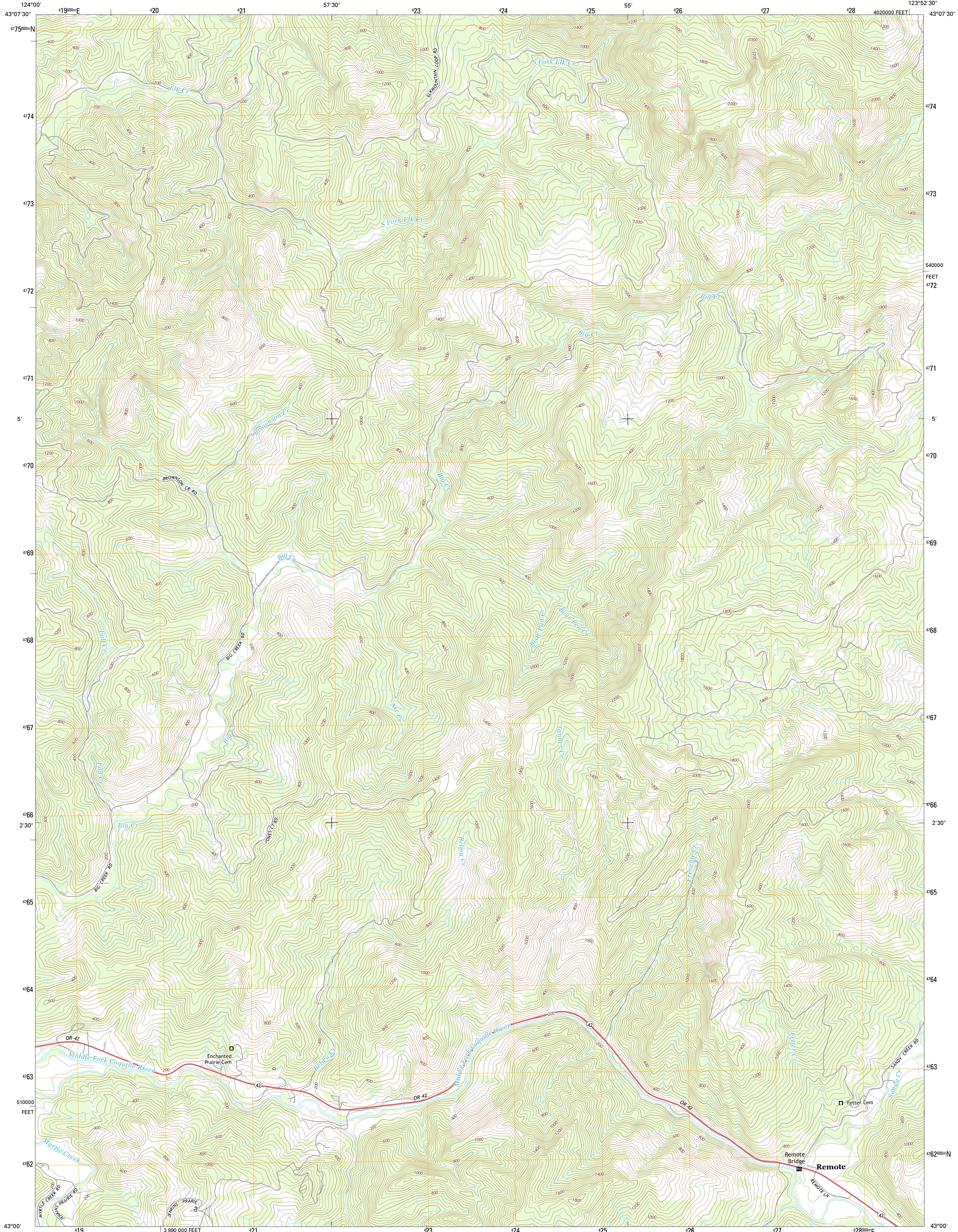




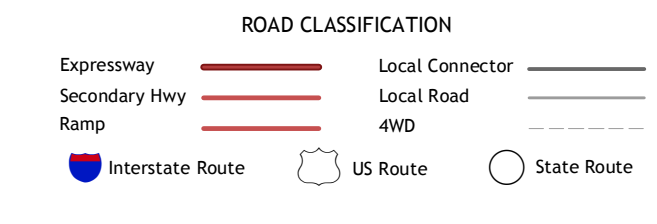
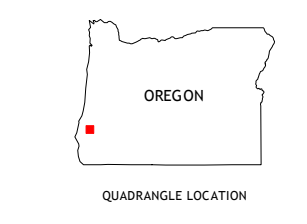
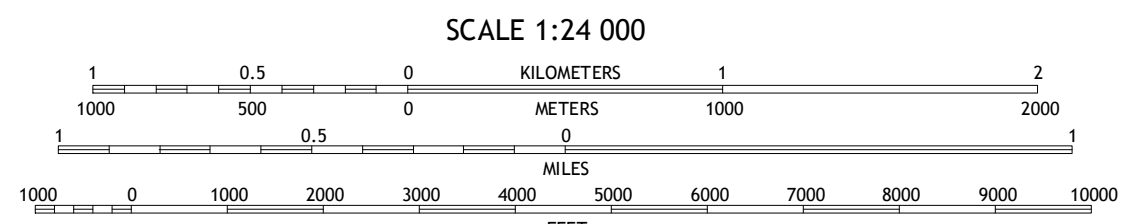
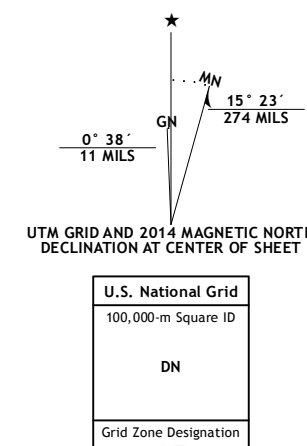
U.S. DEPARTMENT OF THE INTERIOR
U.S. GEOLOGICAL SURVEY



REMOTE QUADRANGLE
OREGON-COOS CO.
7.5-MINUTE SERIES



Produced by the United States Geological Survey
 North American Datum of 1983 (NAD83)
 World Geodetic System of 1984 (WGS84), Projection and
 1 000-meter grid: Universal Transverse Mercator, Zone 10T
 10 000-foot ticks: Oregon Coordinate System of 1983 (south
 zone)
 This map is not a legal document. Boundaries may be
 generalized for this map scale. Private lands within government
 reservations may not be shown. Obtain permission before
 entering private lands.
 Imagery.....NAIP, June 2012
 Roads.....HERE, ©2013
 Names.....GNIS, 2013
 Hydrography.....National Hydrography Dataset, 2012
 Contours.....National Elevation Dataset, 2000
 Boundaries.....Multiple sources; see metadata file 1972 - 2013
 Public Land Survey System.....BLM, 2011



1	2	3
4	5	6
7	8	9

ADJOINING QUADRANGLES

1 McKinley
 2 Dora
 3 Sitkum
 4 Bridge
 5 Kenyon Mountain
 6 Powers
 7 Nasier Creek
 8 Bone Mountain

REMOTE, OR
2014



CONTOUR INTERVAL 40 FEET
 NORTH AMERICAN VERTICAL DATUM OF 1988
 This map was produced to conform with the
 National Geospatial Program US Topo Product Standard, 2011.
 A metadata file associated with this product is draft version 0.6.16