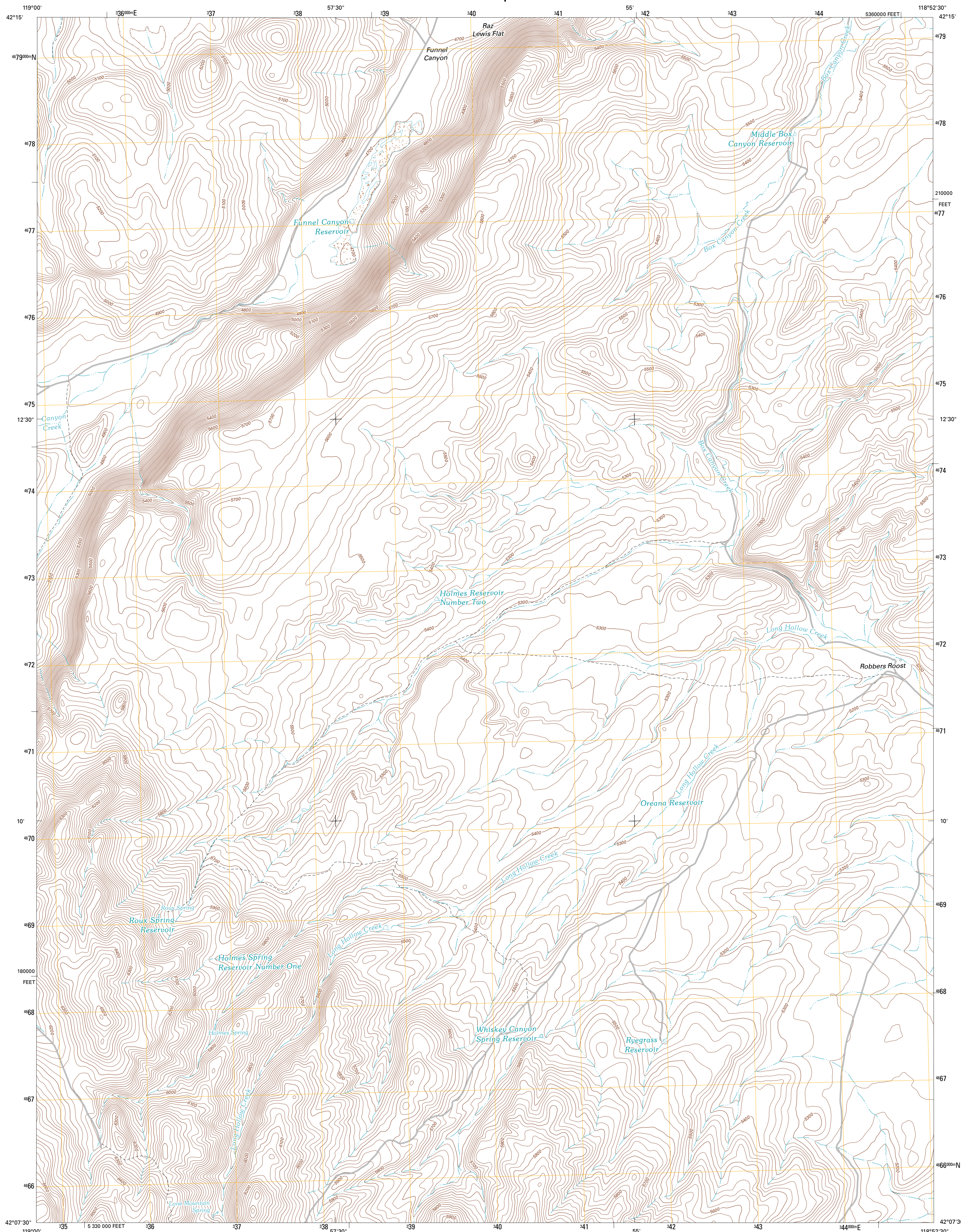




U.S. DEPARTMENT OF THE INTERIOR
U. S. GEOLOGICAL SURVEY

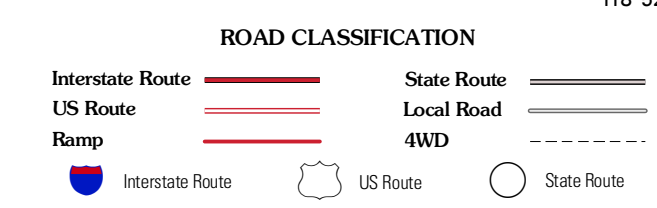
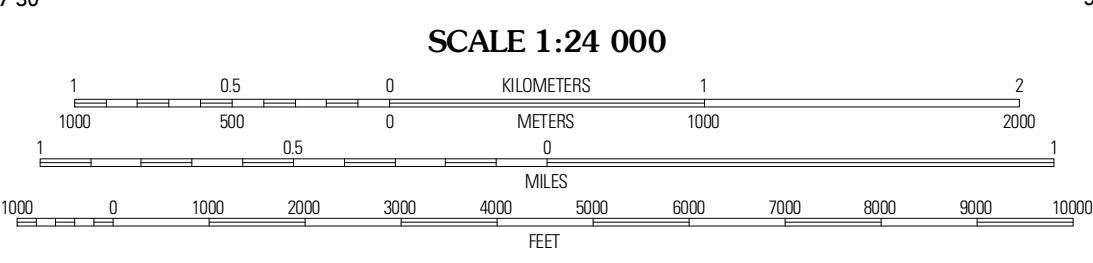
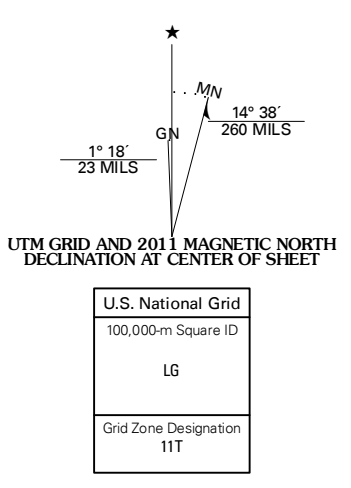


ROBBERS ROOST QUADRANGLE
OREGON-HARNEY CO.
7.5-MINUTE SERIES



Produced by the United States Geological Survey
North American Datum of 1983 (NAD83)
World Geodetic System of 1984 (WGS84). Projection and
1 000-meter grid: Universal Transverse Mercator, Zone 11T
10 000-foot ticks: Oregon Coordinate System of 1983 (south
zone)

Imagery.....NAIP, July 2009
Roads.....©2006-2010 Tele Atlas
Names.....©2006-2010 Tele Atlas
Hydrography.....National Hydrography Dataset, 2009
Contours.....National Elevation Dataset, 2000
Boundaries.....Census, IBWC, B.C. USGS, 1972 - 2010



Copate Gap SE	Square Mountain	Fields Basin
Acty Mountain NE	Robbers Roost	Rincon Flat
Hawks Mountain	Black Rock Springs	Oregon End Table

ROBBERS ROOST, OR
2011

CONTOUR INTERVAL 20 FEET
NORTH AMERICAN VERTICAL DATUM OF 1988

This map was produced to conform with version 0.5.10
of the USGS US Topo Product Standard.
A metadata file associated with this product is draft version 0.5.16

ADJOINING 7.5 QUADRANGLES