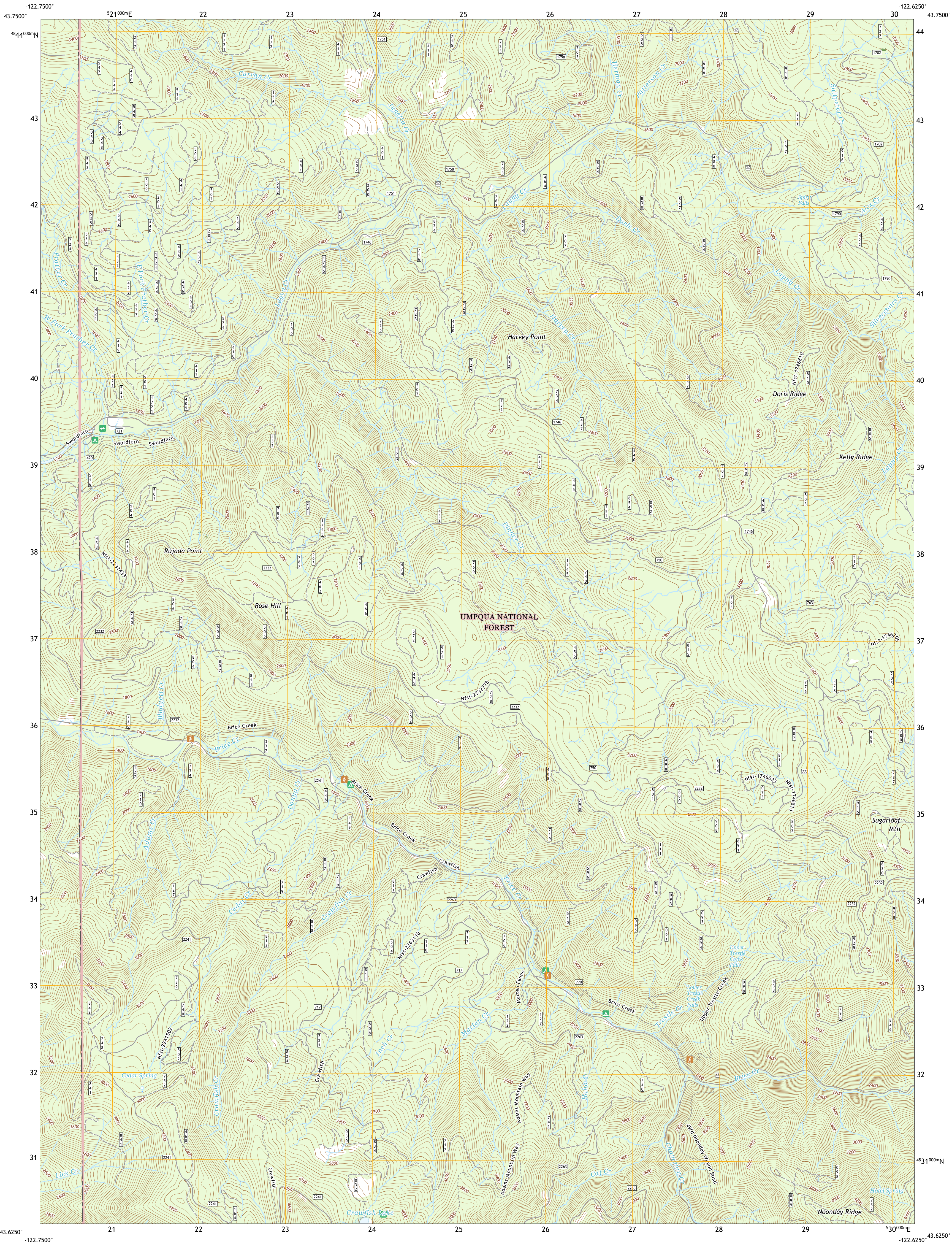




U.S. DEPARTMENT OF THE INTERIOR
U.S. GEOLOGICAL SURVEY

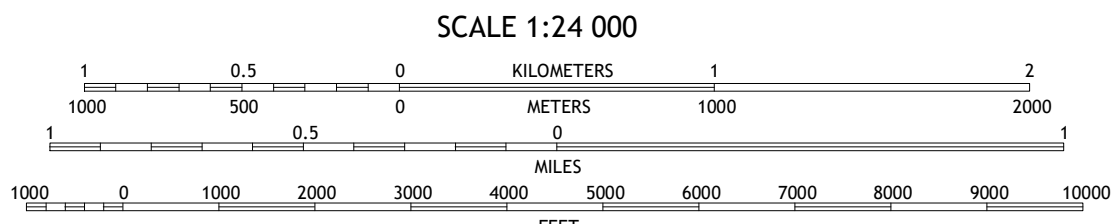
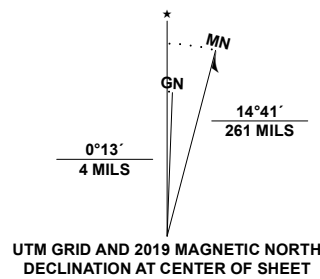


ROSE HILL QUADRANGLE
OREGON - LANE COUNTY
7.5-MINUTE SERIES



Produced by the United States Geological Survey
North American Datum of 1983 (NAD83)
World Geodetic System of 1984 (WGS84). Projection and
1 000-meter grid: Universal Transverse Mercator, Zone 10T
This map is not a legal document. Boundaries may be
generalized for this map scale. Private lands within government
reservations may not be shown. Obtain permission before
entering private lands.

Imagery.....N.A.P., June 2016 - September 2016
Roads.....U.S. Census Bureau, 2016
Roads within US Forest Service Lands.....FSTopo Data
with limited Forest Service updates, 2014
Names.....GNIS, 1980 - 2019
Hydrography.....National Hydrography Dataset, 1899 - 2020
Contours.....National Elevation Dataset, 1999
Boundaries.....Multiple sources: see metadata file 2017 - 2018
Public Land Survey System.....BLM, 2019
Wetlands.....FWS National Wetlands Inventory, 1982



1	2	3
4	5	6
7	8	9

1 Kloster Mountain
2 Mount June
3 Westfir West
4 Culp Creek
5 Holland Point
6 Silica Mountain
7 Fairview Peak
8 Bearbones Mountain

ROAD CLASSIFICATION

Expressway
Secondary Hwy
Ramp
Interstate Route
FS Primary Route

Local Connector
Local Road
4WD
US Route
FS Passenger Route
FS High Clearance Route

State Route

Check with local Forest Service unit
for current travel conditions and restrictions.

ROSE HILL, OR
2020

