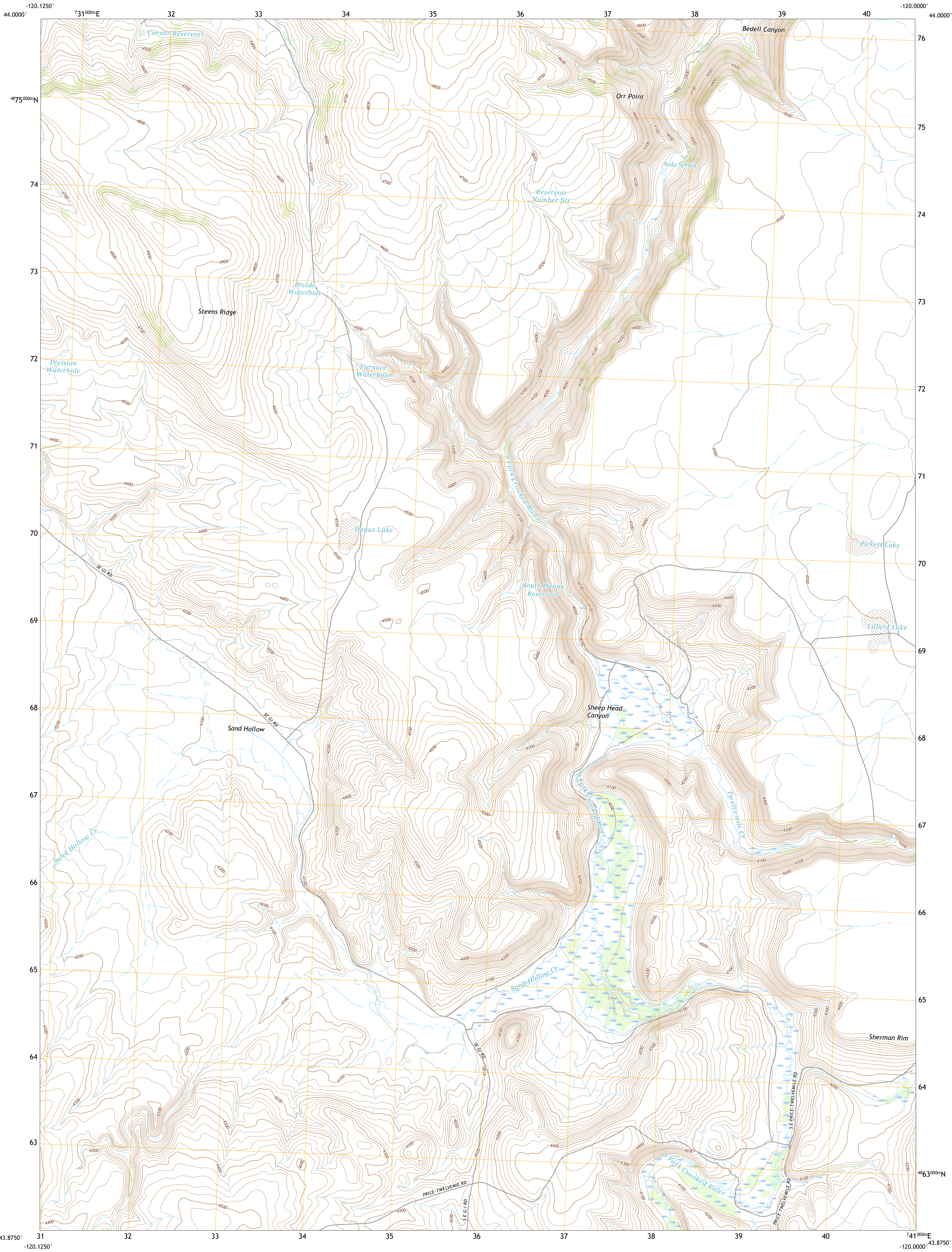




U.S. DEPARTMENT OF THE INTERIOR
U.S. GEOLOGICAL SURVEY



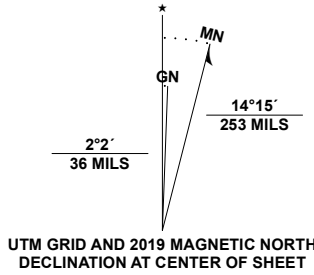
SAND HOLLOW QUADRANGLE
OREGON - CROOK COUNTY
7.5-MINUTE SERIES



Produced by the United States Geological Survey

North American Datum of 1983 (NAD83)
World Geodetic System of 1984 (WGS84), Projection and
1 000-meter grid/Universal Transverse Mercator, Zone 10T111T
This map is not a legal document. Boundaries may be
generalized for this map scale. Private lands within government
reservations may not be shown. Obtain permission before
entering private lands.

Imagery.....NAIP, June 2016 - September 2016
Roads.....U.S. Census Bureau, 2016
Names.....GNIS, 1993-2012
Hydrography.....National Hydrography Dataset, 1989 - 2019
Contours.....National Elevation Dataset, 2000
Boundaries.....Multiple sources: see metadata file 2017 - 2018
Public Land Survey System.....BLM, 2019
Wetlands.....FWS National Wetlands Inventory 1982



U.S. National Grid	
100,000 - in Square ID	
GP	KJ
120°W	
Grid Zone Designation	10T
120°W	



CONTOUR INTERVAL 20 FEET
NORTH AMERICAN VERTICAL DATUM OF 1988
This map was produced to conform with the
National Geospatial Program US Topo Product Standard, 2011.
A metadata file associated with this product is draft version 0.6.18

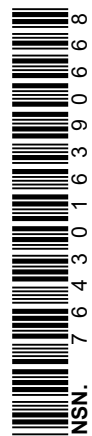


1	2	3
4	5	6
7	8	9

- 1 Arrowwood Point
- 2 Liggett Table
- 3 Maupin Butte
- 4 Gerry Mountain
- 5 Hardin Ranch
- 6 Long Barn
- 7 I Ranch
- 8 Ilex Butte

ROAD CLASSIFICATION	
Expressway	Local Connector
Secondary Hwy	Local Road
Ramp	4WD
Interstate Route	US Route
	State Route

SAND HOLLOW, OR
2020



NSN 756 030 163 906 68
NSA REF NO. USGS X 2 4 K 3 9 7 5 7