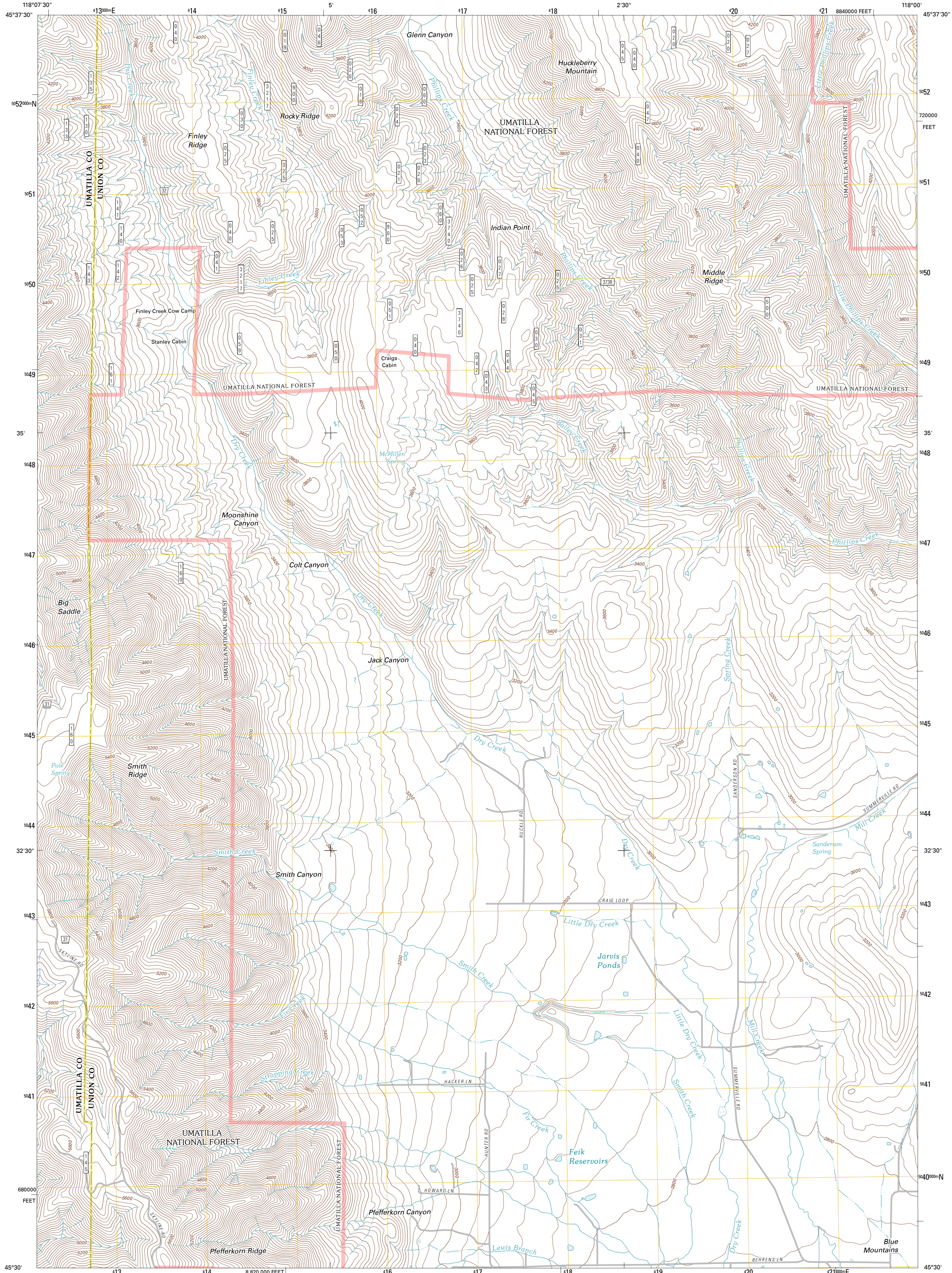




U.S. DEPARTMENT OF THE INTERIOR
U. S. GEOLOGICAL SURVEY

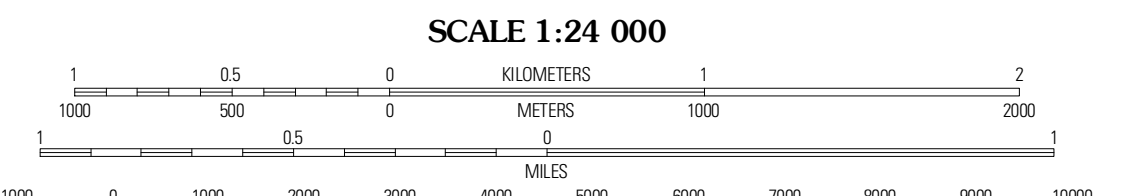
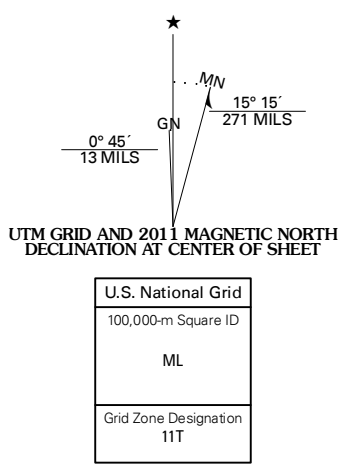


SANDERSON SPRING QUADRANGLE
OREGON
7.5-MINUTE SERIES



Produced by the United States Geological Survey
North American Datum of 1983 (NAD83)
World Geodetic System of 1984 (WGS84). Projection and
1 000-meter grid: Universal Transverse Mercator, Zone 11T
10 000-foot ticks: Oregon Coordinate System of 1983 (north zone)

Imagery: NMAP, July 2009
Roads: 02/06-2010 Tele Atlas
Roads within US Forest Service Lands: FSTopo Data
with limited Forest Service updates, 2009
Names: GNIS, 2010
Hydrography: National Hydrography Dataset, 2009
Contours: National Elevation Dataset, 2000
Boundaries: Census, IBWC, IBC, USGS, 1972 - 2010



CONTOUR INTERVAL 40 FEET
NORTH AMERICAN VERTICAL DATUM OF 1988
This map was produced to conform with version 0.5.10
of the USGS US Topo Product Standard.
A metadata file associated with this product is draft version 0.5.16



QUADRANGLE LOCATION

Bingham Springs	Asalus Prairie	Partridge Creek
Thimbleberry Mountains	Sanderson Spring	Elgin
Dumhill Ridge	Summerville	Imbler

ROAD CLASSIFICATION

Interstate Route	State Route	Local Road
US Route	4WD	
Ramp		
FS Primary Route	US Route	State Route
	FS Passenger Route	FS High Clearance Route

Check with local Forest Service unit for current travel conditions and restrictions.

SANDERSON SPRING, OR
2011

ADJOINING 7.5 QUADRANGLES