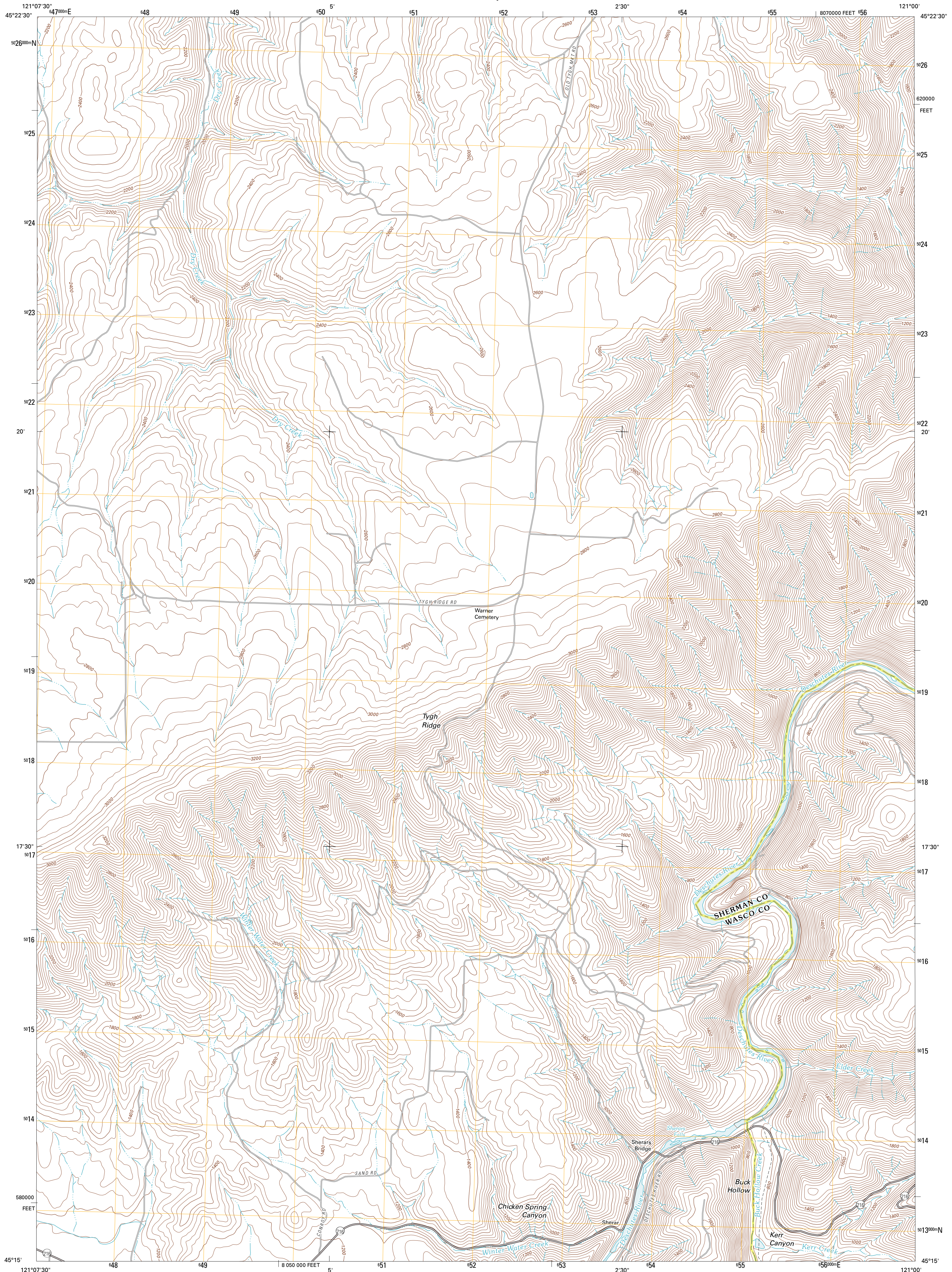




U.S. DEPARTMENT OF THE INTERIOR
U. S. GEOLOGICAL SURVEY

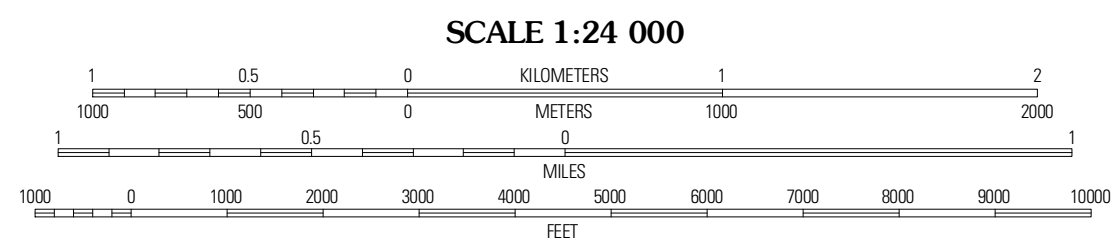
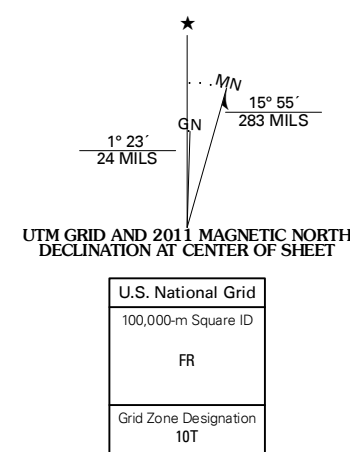


SHERARS BRIDGE QUADRANGLE
OREGON
7.5-MINUTE SERIES



Produced by the United States Geological Survey
North American Datum of 1983 (NAD83)
World Geodetic System of 1984 (WGS84). Projection and
1 000-meter grid. Universal Transverse Mercator, Zone 10T
10 000-foot ticks: Oregon Coordinate System of 1983 (north
zone)

Imagery.....NAIP, July 2009
Roads.....©2006-2010 Tele Atlas
Names.....National Hydrography Dataset, 2010
Hydrography.....National Hydrography Dataset, 2009
Contours.....National Elevation Dataset, 1999
Boundaries.....Census, IBWC, IBC, USGS, 1972 - 2010



CONTOUR INTERVAL 40 FEET
NORTH AMERICAN VERTICAL DATUM OF 1988
This map was produced to conform with version 0.5.10
of the USGS US Topo Product Standard.
A metadata file associated with this product is draft version 0.5.16



QUADRANGLE LOCATION

Dufur West	Dufur East	Summit Ridge
Postage Stamp Butte	Sherars Bridge	Sinamox
Tygh Valley	Muspin	Dead Dog Canyon

ADJOINING 7.5' QUADRANGLES

ROAD CLASSIFICATION

Interstate Route	State Route
US Route	Local Road
Ramp	4WD

Legend: Interstate Route (thick red line), US Route (red line), Ramp (red line with blue triangle), State Route (grey line), Local Road (thin grey line), 4WD (dashed grey line)

SHERARS BRIDGE, OR
2011