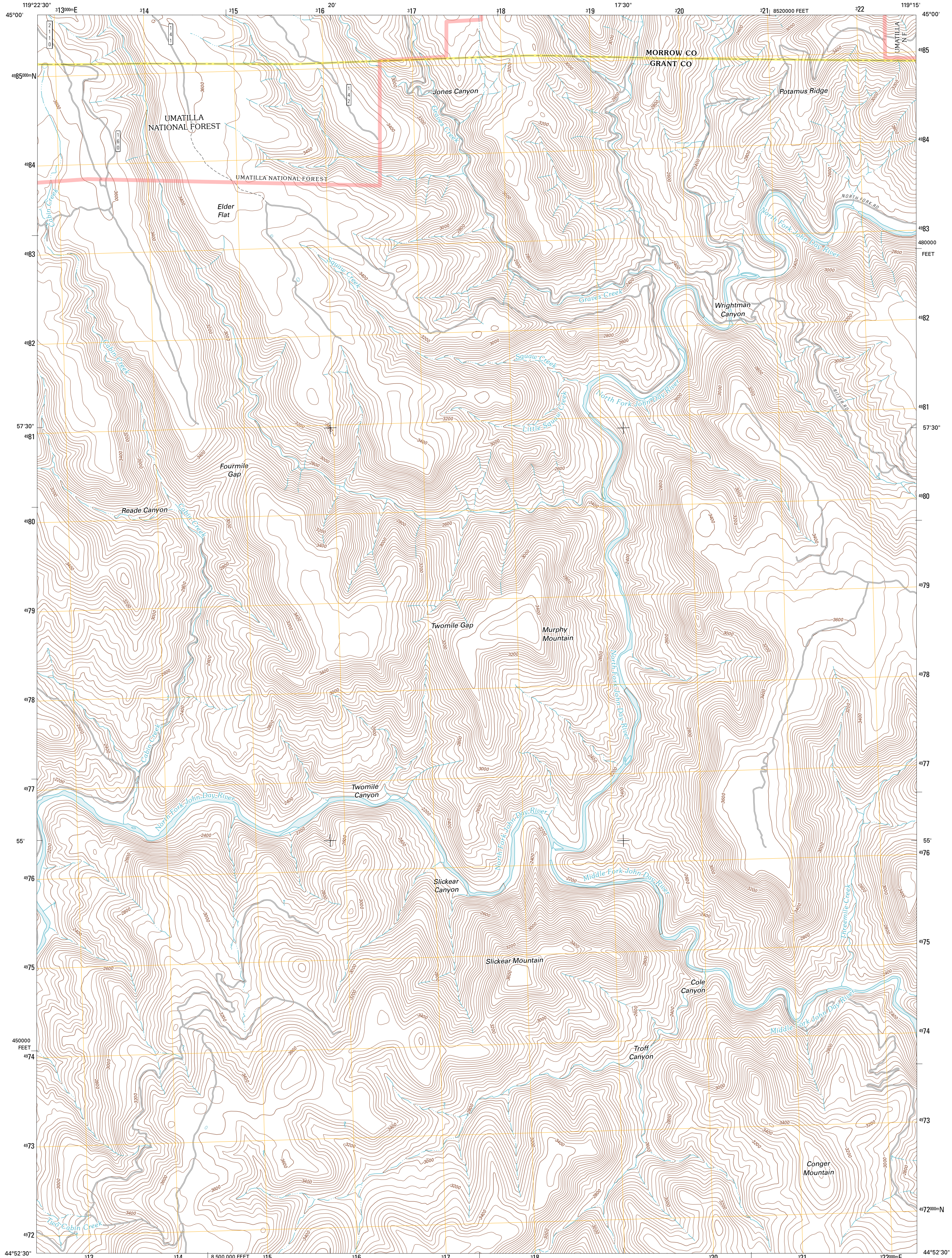




U.S. DEPARTMENT OF THE INTERIOR
U. S. GEOLOGICAL SURVEY

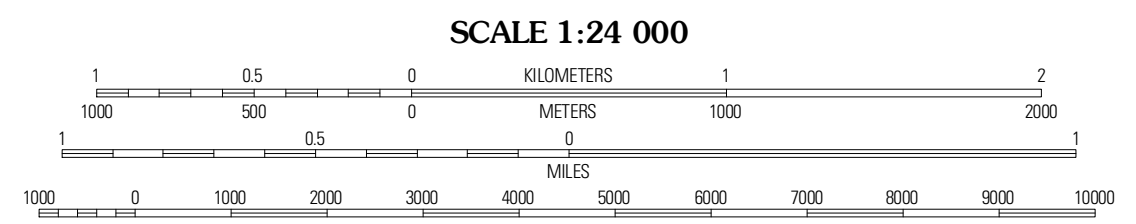
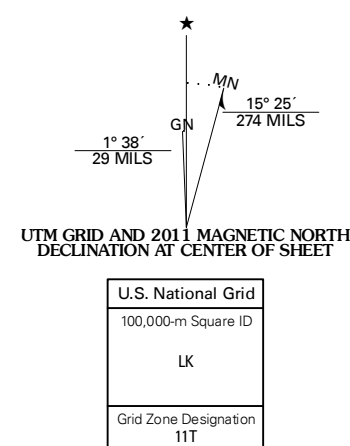


SLICKEAR MOUNTAIN QUADRANGLE
OREGON
7.5-MINUTE SERIES



Produced by the United States Geological Survey
North American Datum of 1983 (NAD83)
World Geodetic System of 1984 (WGS84). Projection and
1 000-meter grid: Universal Transverse Mercator, Zone 11T
10 000-foot ticks: Oregon Coordinate System of 1983 (north
zone)

Imagery.....NAIP, July 2009
Roads.....62006-2010 Tele Atlas
Roads within US Forest Service Lands.....FS Topo Data
with limited Forest Service updates, 2009
Names.....GNIS, 2010
Hydrography.....National Hydrography Dataset, 2009
Contours.....National Elevation Dataset, 1999
Boundaries.....Census, IBWC, IBC, USGS, 1972 - 2010



QUADRANGLE LOCATION

| | | |
|----------------------------|----------------------|------------------|
| Madison Burns | Lake Pendland | Thompson Flat |
| Johnny Coke Mountain | Slickear Mountain | Ritter |
| Monument | Steet Mountain | Bullock Culch |

ADJOINING 7.5' QUADRANGLES

ROAD CLASSIFICATION

Interstate Route State Route

US Route Local Road

Ramp AWD

Interstate Route US Route

FS Primary Route FS Passenger Route

State Route FS High Clearance Route

Check with local Forest Service unit
for current travel conditions and restrictions.

SLICKEAR MOUNTAIN, OR
2011