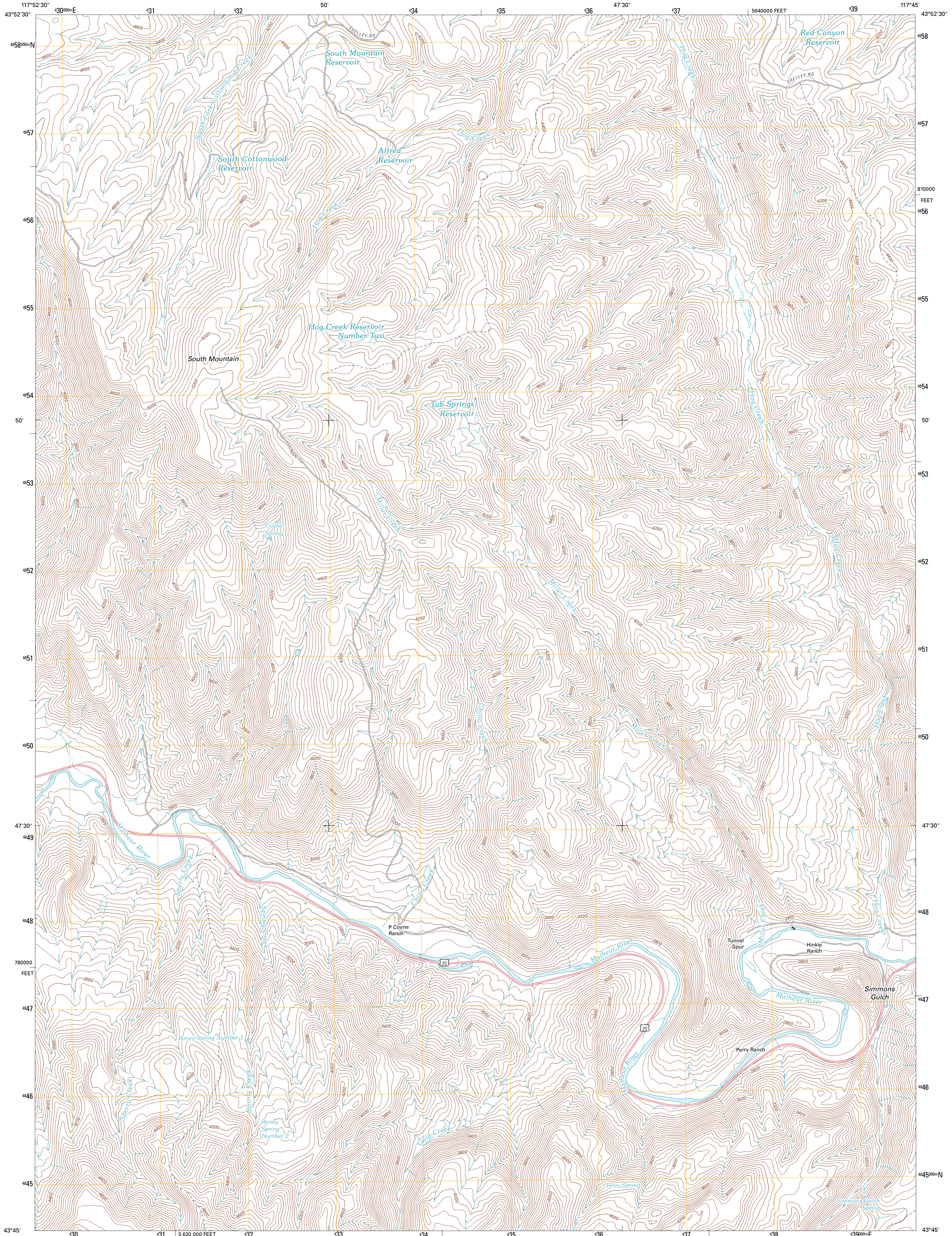




U.S. DEPARTMENT OF THE INTERIOR
U. S. GEOLOGICAL SURVEY

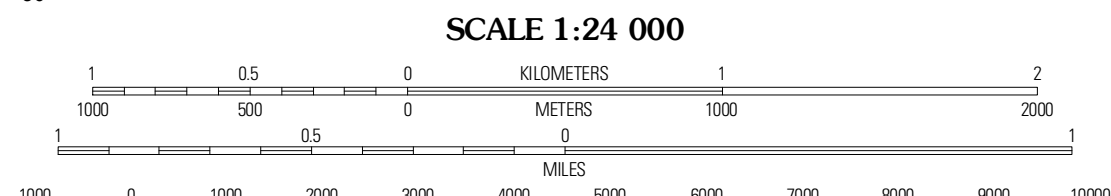
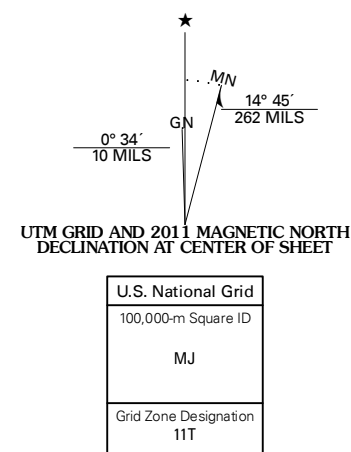


SOUTH MOUNTAIN QUADRANGLE
OREGON-MALHEUR CO.
7.5-MINUTE SERIES



Produced by the United States Geological Survey
North American Datum of 1983 (NAD83)
World Geodetic System of 1984 (WGS84). Projection and
1 000-meter grid: Universal Transverse Mercator, Zone 11T
10 000-foot ticks: Oregon Coordinate System of 1983 (south
zone)

Imagery.....N.A.P., July 2009
Roads.....©2006-2010 Tele Atlas
Names.....©NSI, 2010
Hydrography.....National Hydrography Dataset, 2009
Contours.....National Elevation Dataset, 2000
Boundaries.....Census, IBWC, IBC, USGS, 1972 - 2010



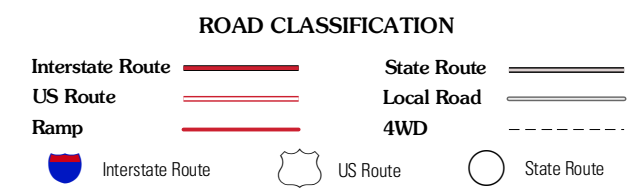
CONTOUR INTERVAL 40 FEET
NORTH AMERICAN VERTICAL DATUM OF 1988

This map was produced to conform with version 0.5.10
of the USGS US Topo Product Standard.
A metadata file associated with this product is draft version 0.5.16



QUADRANGLE LOCATION

Westfall Butte	Little Black Canyon	Westfall
Jonesboro	South Mountain	Namorf
Monument Peak	Tins Peak	Avery Creek



SOUTH MOUNTAIN, OR
2011

ADJOINING 7.5' QUADRANGLES