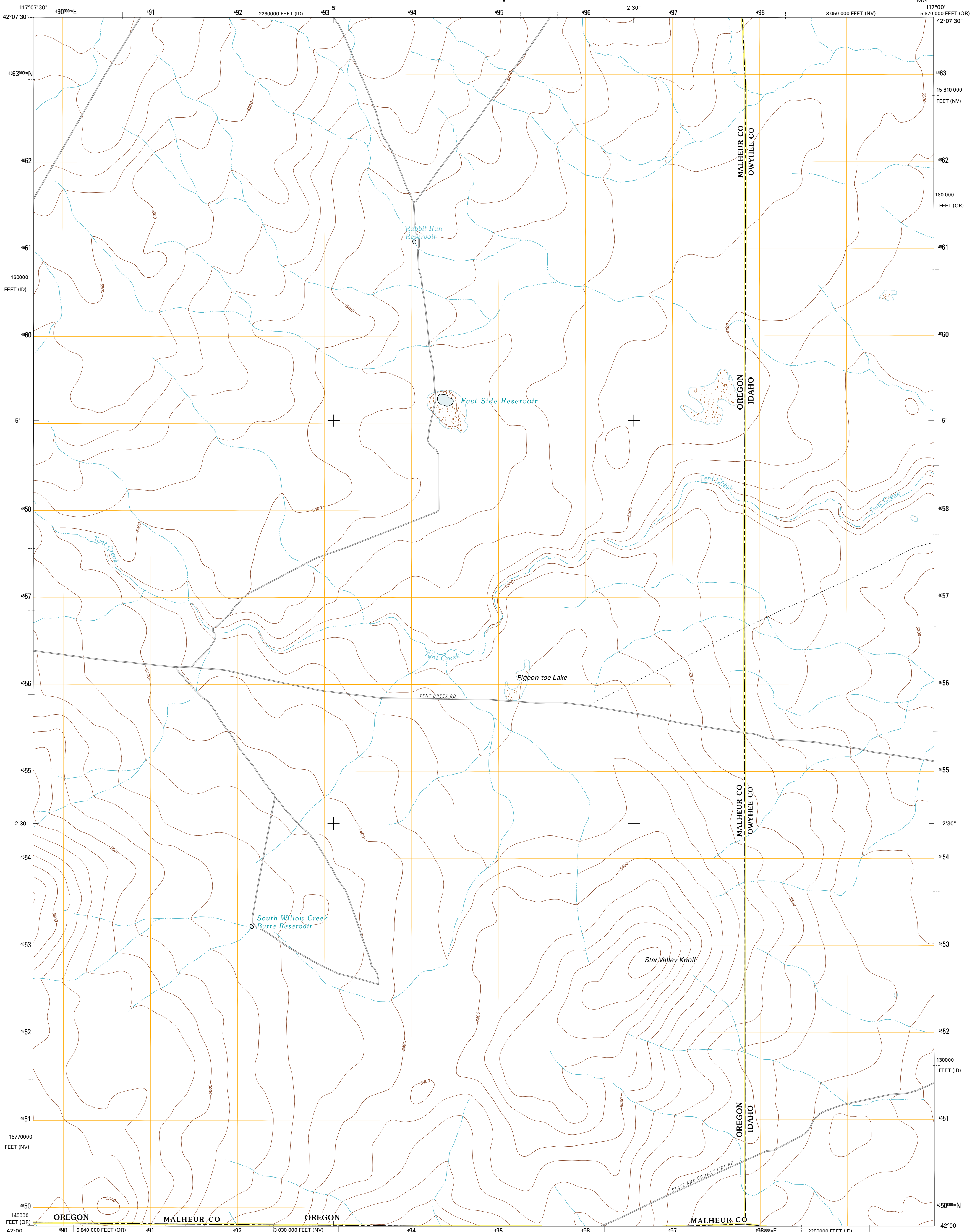




U.S. DEPARTMENT OF THE INTERIOR  
U. S. GEOLOGICAL SURVEY



STAR VALLEY KNOLL QUADRANGLE  
OREGON-IDAHO-NEVADA  
7.5-MINUTE SERIES



Produced by the United States Geological Survey  
 North American Datum of 1983 (NAD83)  
 World Geodetic System of 1984 (WGS84) Projection and  
 1 000-meter grid: Universal Transverse Mercator Zone 11T  
 10 000-foot ticks: Oregon Coordinate System of 1983 (south zone), Idaho Coordinate System of 1983 (west zone), Nevada Coordinate System of 1983 (west zone)

Imagery: NAIP, July 2009  
 Roads: ©2006-2010 Tele Atlas  
 Names: ©2006-2010 Tele Atlas  
 Hydrography: National Hydrography Dataset, 2009  
 Contours: National Elevation Dataset, 2001  
 Boundaries: Census, IBWC, IBC, USGS, 1972 - 2010

UTM GRID AND 2011 MAGNETIC NORTH DECLINATION AT CENTER OF SHEET

U.S. National Grid  
 100,000m Square ID  
 MG  
 Grid Zone Designation  
 11T

SCALE 1:24 000

CONTOUR INTERVAL 20 FEET  
 NORTH AMERICAN VERTICAL DATUM OF 1988

This map was produced to conform with version 0.5.10 of the USGS US Topo Product Standard. A metadata file associated with this product is draft version 0.5.16

ROAD CLASSIFICATION

Interstate Route	State Route
US Route	Local Road
Ramp	4WD

QUADRANGLE LOCATION

Stoney Corral	Defeat Butte	Spring Creek Basin
Lookout Lake	Star Valley Knoll	Star Valley
Calico Butte	Nadine Butte	Star Valley Ridge West

STAR VALLEY KNOLL, OR-ID-NV  
2011

ADJOINING 7.5' QUADRANGLES