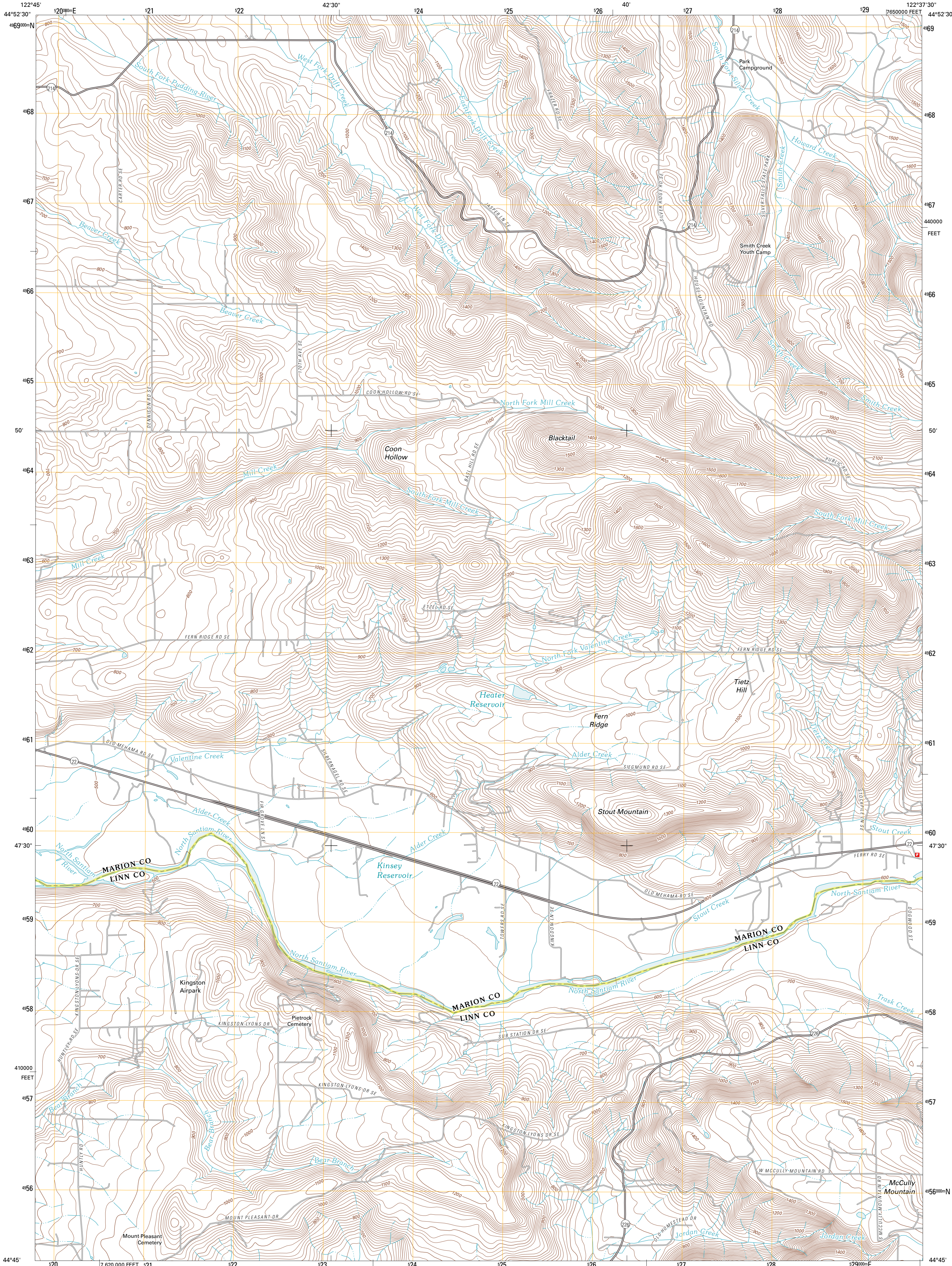




U.S. DEPARTMENT OF THE INTERIOR
U. S. GEOLOGICAL SURVEY

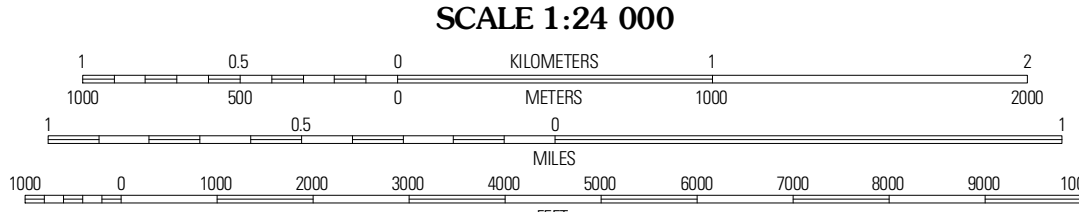
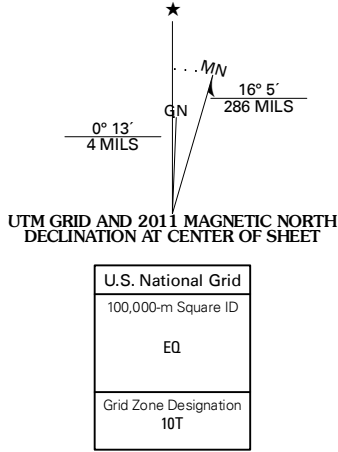


STOUT MOUNTAIN QUADRANGLE
OREGON
7.5-MINUTE SERIES



Produced by the United States Geological Survey
North American Datum of 1983 (NAD83)
World Geodetic System of 1984 (WGS84). Projection and
1 000-meter grid: Universal Transverse Mercator, Zone 10T
10 000-foot ticks: Oregon Coordinate System of 1983 (north zone)

Imagery.....NAIP, June 2009
Roads.....©2006-2010 Tele Atlas
Names.....GNIS, 2010
Hydrography.....National Hydrography Dataset, 2009
Contours.....National Elevation Dataset, 2000
Boundaries.....Census, IBWC, IBC, USGS, 1972 - 2010



CONTOUR INTERVAL 20 FEET
NORTH AMERICAN VERTICAL DATUM OF 1988
This map was produced to conform with version 0.5.10
of the USGS US Topo Product Standard.
A metadata file associated with this product is draft version 0.5.16



| QUADRANGLE LOCATION | | | |
|---------------------|----------------|-------------|--|
| Stanton NE | Drake Crossing | Elk Prairie | |
| Stanton | Stout Mountain | Lyons | |
| Scio | Jordan | Snow Peak | |

| ROAD CLASSIFICATION | | | |
|---------------------|------------------|------------|-------------|
| Interstate Route | State Route | Local Road | 4WD |
| US Route | State Route | Local Road | 4WD |
| Ramp | Interstate Route | US Route | State Route |

STOUT MOUNTAIN, OR
2011