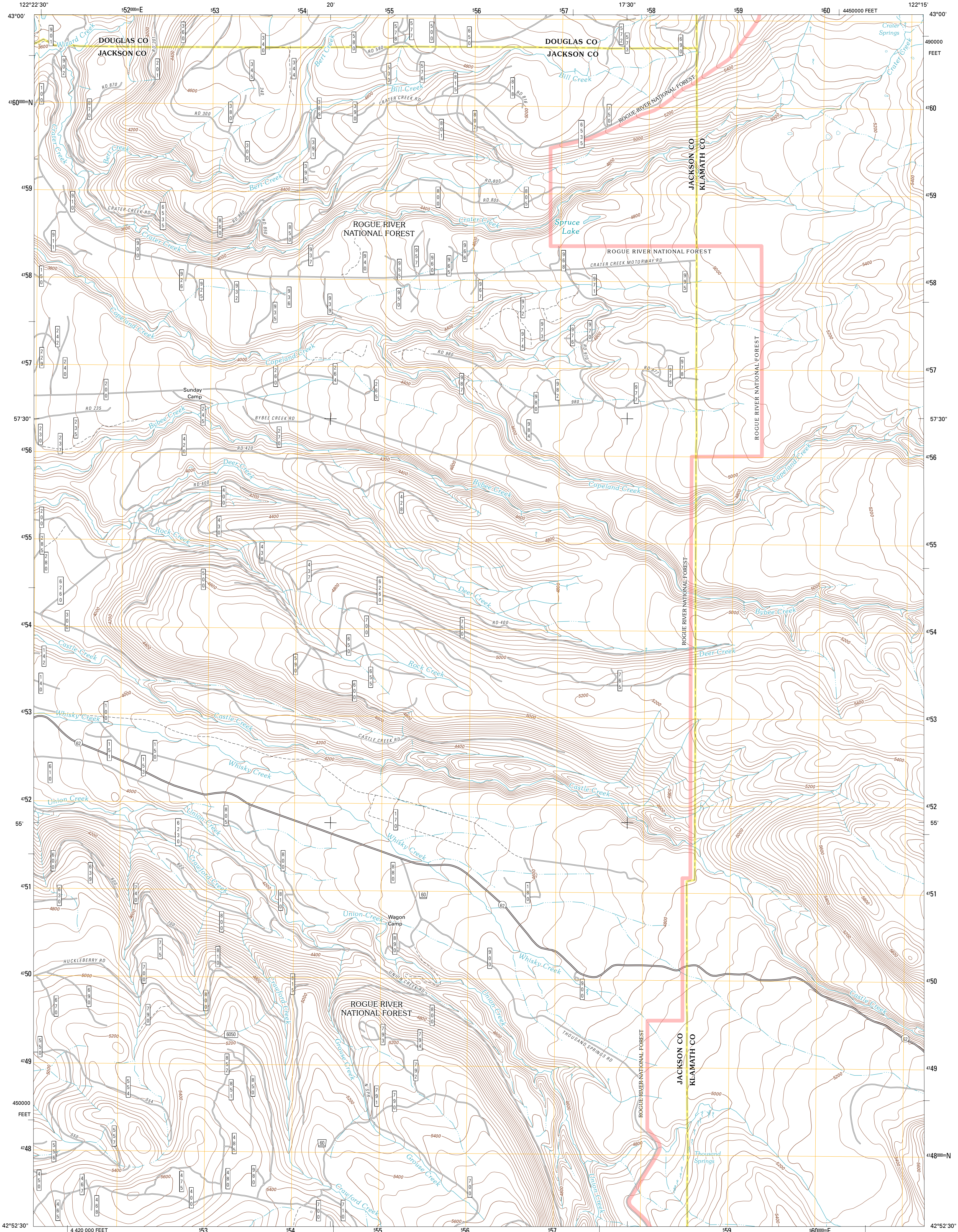




U.S. DEPARTMENT OF THE INTERIOR  
U. S. GEOLOGICAL SURVEY

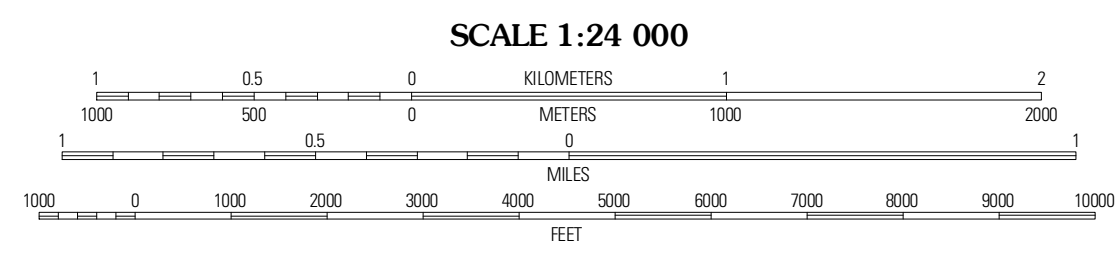
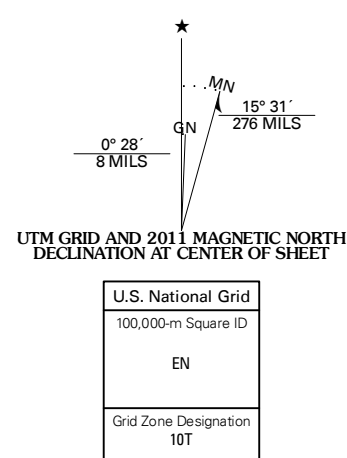


THOUSAND SPRINGS QUADRANGLE  
OREGON  
7.5-MINUTE SERIES



Produced by the United States Geological Survey  
North American Datum of 1983 (NAD83)  
World Geodetic System of 1984 (WGS84). Projection and  
1 000-meter grid: Universal Transverse Mercator, Zone 10T  
10 000-foot ticks: Oregon Coordinate System of 1983 (south zone)

Imagery: N.A.I.P. June 2009  
Roads: ©2006-2010 Td Atlas  
Roads within US Forest Service Lands: FSTopo Data  
with limited Forest Service updates, 2009  
Names: GNIS, 2010  
Hydrography: National Hydrography Dataset, 2009  
Contours: National Elevation Dataset, 1999  
Boundaries: Census, IBWC, IBC, USGS, 1972 - 2010



CONTOUR INTERVAL 40 FEET  
NORTH AMERICAN VERTICAL DATUM OF 1988

This map was produced to conform with version 0.5.10  
of the USGS US Topo Product Standard.  
A metadata file associated with this product is draft version 0.5.16



Flah Mountain	Hamaker Butte	Pumice Desert West
Union Creek	Thousand Springs	Crater Lake West
Prospect North	Red Bluff Mountain	Union Peak

**ROAD CLASSIFICATION**

Interstate Route (thick red line)  
US Route (red line)  
Ramp (red line with blue triangle)  
FS Primary Route (dashed line)

State Route (grey line)  
Local Road (thin grey line)  
4WD (dashed grey line)  
US Route (circle with 'U')  
FS Passenger Route (circle with 'P')  
FS High Clearance Route (circle with 'H')

Check with local Forest Service unit  
for current travel conditions and restrictions.

THOUSAND SPRINGS, OR  
2011

ADJOINING 7.5 QUADRANGLES